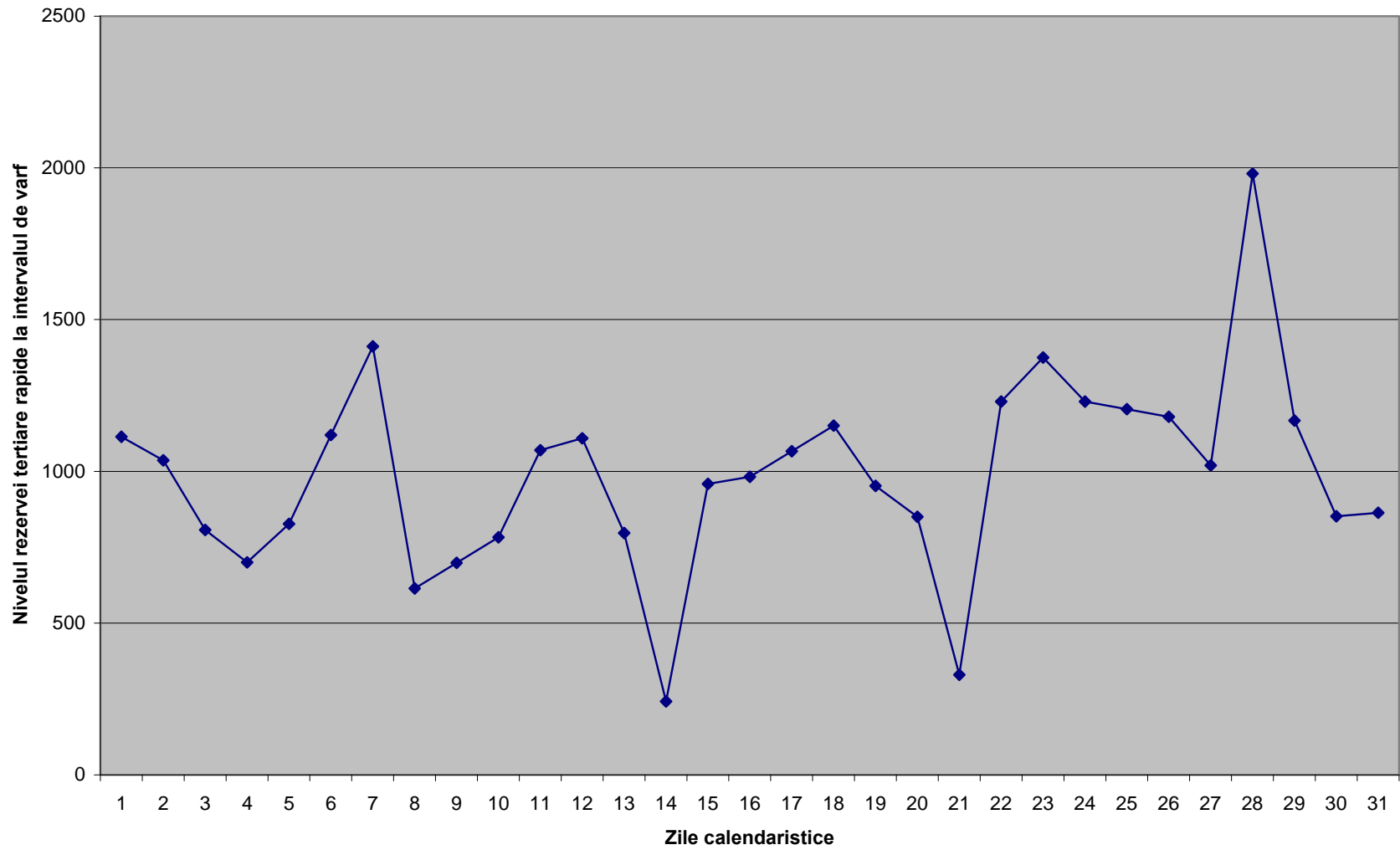


Valorile rezervei terțiare rapide (RTR) oferite de producători pentru patru luni caracteristice din anul 2007

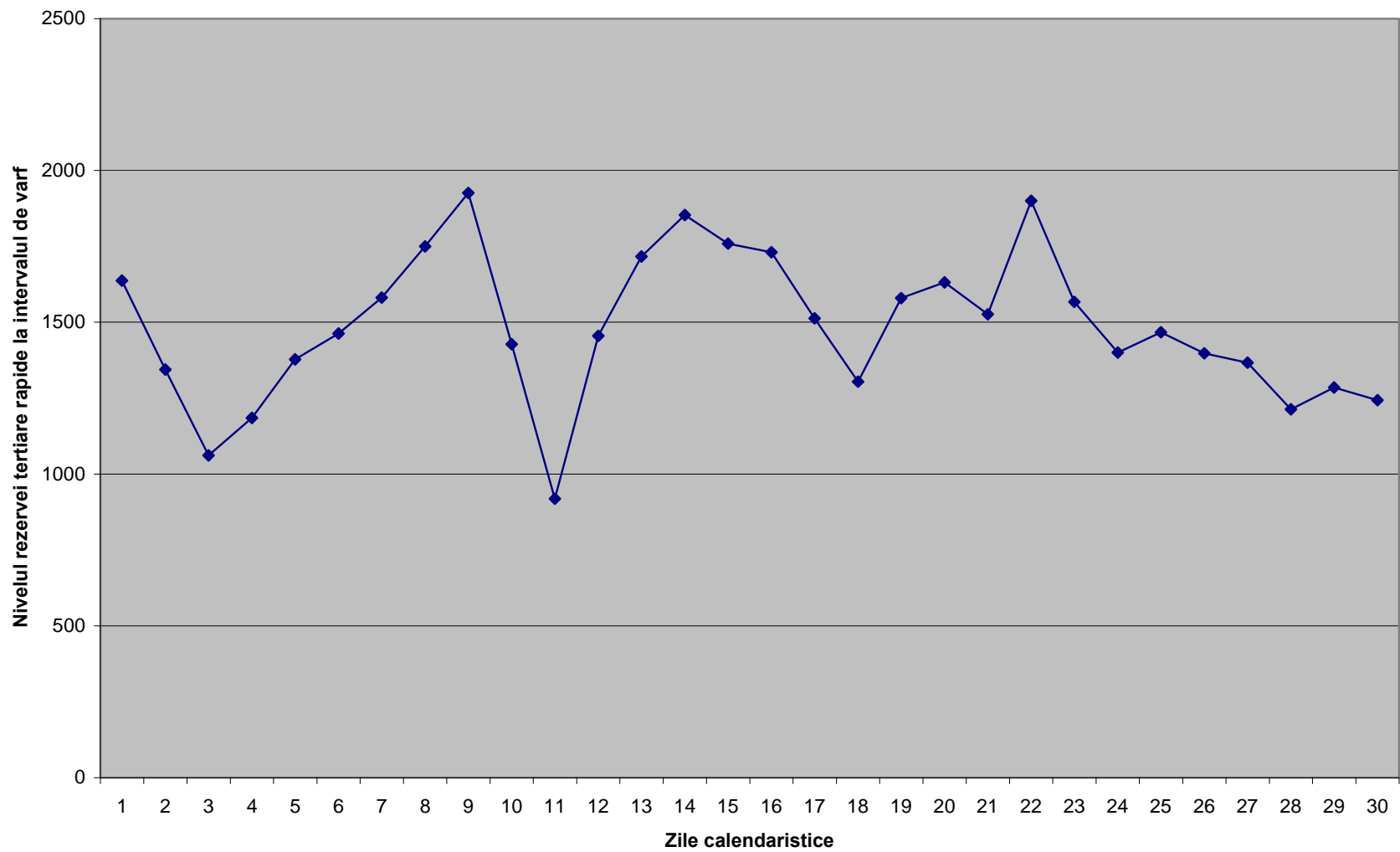
Anexa 3

Data	RTR ianuarie	Interval vârf	Data	RTR aprilie	Interval vârf	Data	RTR iunie	Interval vârf	Data	RTR octombrie	Interval vârf
1-Jan-07	1114	21	1-Apr-07	1637	21	1-Jun-07	955	22	1-Oct-07	1090	21
2-Jan-07	1036	19	2-Apr-07	1345	21	2-Jun-07	1231	22	2-Oct-07	896	21
3-Jan-07	807	19	3-Apr-07	1061	21	3-Jun-07	1414	22	3-Oct-07	1127	21
4-Jan-07	700	19	4-Apr-07	1185	21	4-Jun-07	1435	22	4-Oct-07	907	21
5-Jan-07	827	19	5-Apr-07	1377	21	5-Jun-07	1269	22	5-Oct-07	918	21
6-Jan-07	1120	19	6-Apr-07	1463	21	6-Jun-07	1340	14	6-Oct-07	1439	21
7-Jan-07	1412	19	7-Apr-07	1581	21	7-Jun-07	1340	14	7-Oct-07	1744	21
8-Jan-07	614	19	8-Apr-07	1750	22	8-Jun-07	1254	14	8-Oct-07	814	21
9-Jan-07	699	19	9-Apr-07	1926	21	9-Jun-07	1898	23	9-Oct-07	1069	21
10-Jan-07	783	19	10-Apr-07	1427	21	10-Jun-07	1708	23	10-Oct-07	853	21
11-Jan-07	1070	19	11-Apr-07	919	21	11-Jun-07	764	14	11-Oct-07	659	21
12-Jan-07	1109	19	12-Apr-07	1455	22	12-Jun-07	1133	23	12-Oct-07	756	21
13-Jan-07	797	19	13-Apr-07	1716	22	13-Jun-07	1223	14	13-Oct-07	1222	21
14-Jan-07	242	20	14-Apr-07	1854	22	14-Jun-07	1425	22	14-Oct-07	1492	21
15-Jan-07	959	19	15-Apr-07	1759	22	15-Jun-07	1179	14	15-Oct-07	682	21
16-Jan-07	982	19	16-Apr-07	1731	22	16-Jun-07	1549	22	16-Oct-07	1292	21
17-Jan-07	1067	19	17-Apr-07	1513	22	17-Jun-07	2244	23	17-Oct-07	1055	21
18-Jan-07	1151	19	18-Apr-07	1304	22	18-Jun-07	1027	22	18-Oct-07	1246	21
19-Jan-07	952	19	19-Apr-07	1580	22	19-Jun-07	1170	14	19-Oct-07	408	21
20-Jan-07	850	19	20-Apr-07	1631	22	20-Jun-07	1626	14	20-Oct-07	948	21
21-Jan-07	330	19	21-Apr-07	1526	22	21-Jun-07	1342	14	21-Oct-07	1089	21
22-Jan-07	1230	19	22-Apr-07	1900	22	22-Jun-07	1423	14	22-Oct-07	554	21
23-Jan-07	1375	19	23-Apr-07	1567	22	23-Jun-07	1491	13	23-Oct-07	1009	20
24-Jan-07	1230	19	24-Apr-07	1400	22	24-Jun-07	1371	23	24-Oct-07	1392	20
25-Jan-07	1205	19	25-Apr-07	1467	22	25-Jun-07	481	14	25-Oct-07	1246	20
26-Jan-07	1180	19	26-Apr-07	1398	22	26-Jun-07	869	14	26-Oct-07	1904	20
27-Jan-07	1020	19	27-Apr-07	1367	22	27-Jun-07	694	14	27-Oct-07	1327	20
28-Jan-07	1981	19	28-Apr-07	1213	22	28-Jun-07	888	14	28-Oct-07	1524	20
29-Jan-07	1167	19	29-Apr-07	1285	22	29-Jun-07	643	14	29-Oct-07	906	19
30-Jan-07	852	19	30-Apr-07	1243	22	30-Jun-07	1828	23	30-Oct-07	927	19
31-Jan-07	864	19							31-Oct-07	1477	19
<b>Medie</b>	<b>991</b>		<b>1486</b>			<b>1274</b>			<b>1096</b>		
<b>Maxim</b>	<b>1981</b>		<b>1926</b>			<b>2244</b>			<b>1904</b>		
<b>Minim</b>	<b>242</b>		<b>919</b>			<b>481</b>			<b>408</b>		
<b>Medie anuală: 1212</b>											
<b>Maxim anual: 2244</b>											
<b>Minim anual: 242</b>											

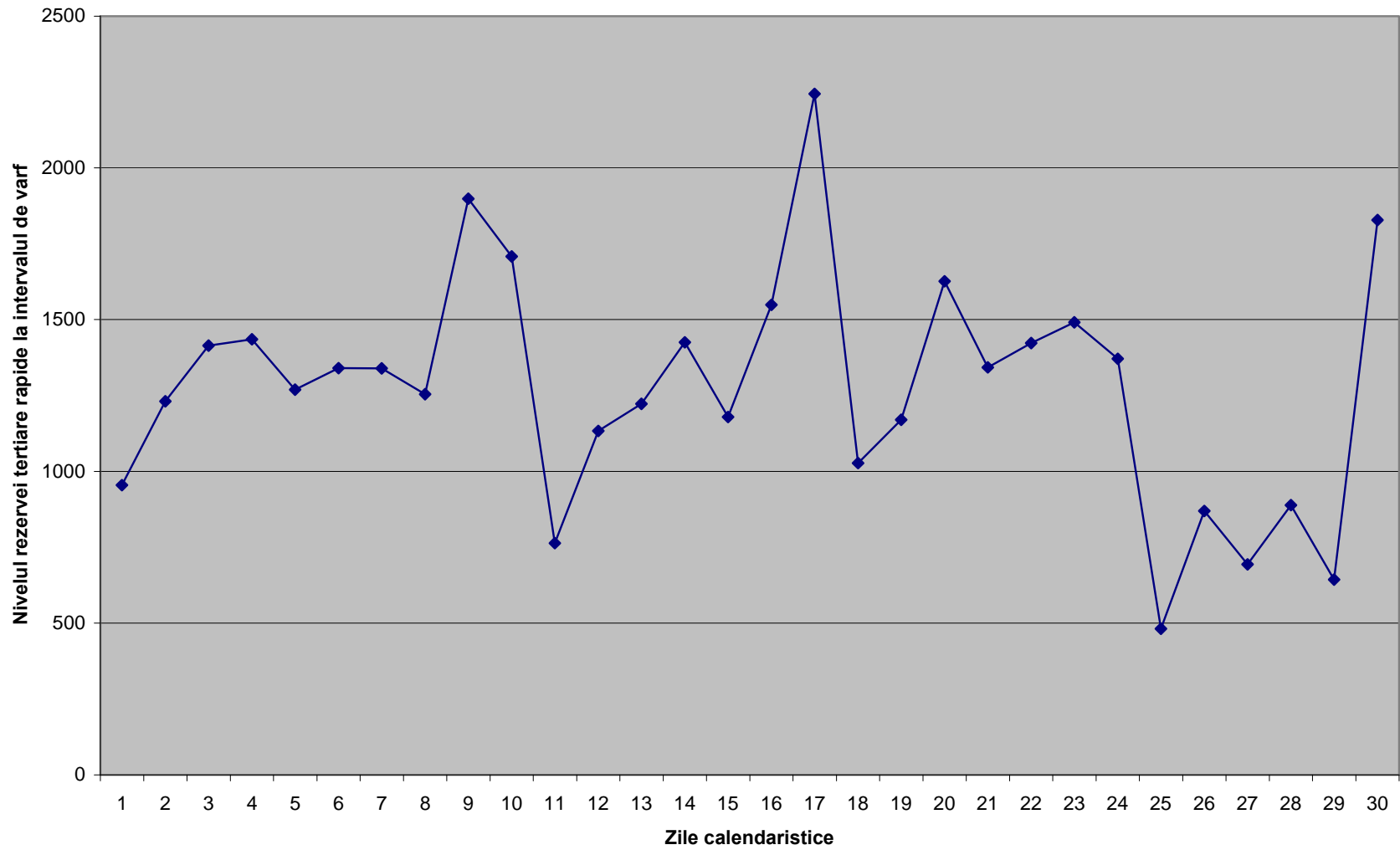
Rezerva terciara rapida disponibila in Ianuarie 2007



### Rezerva tertiara rapida disponibila in Aprilie 2007



Rezerva terciara rapida disponibila in Iunie 2007



Rezerva terciara rapida disponibila in Octombrie 2007

