



Transelectrica®  
Societate Administrată în Sistem Dualist

# MARKET MONITORING REPORT

## Market for Allocation of Cross-Border Capacities

July 2012



ANRE - Romanian Energy Regulatory Authority  
HHI - Herfindahl-Hirschman Index  
BRP - Balance Responsible Party  
BM - Balancing Market  
DAM - Day Ahead Market  
TSO - Transmission System Operator  
DU – Dispatchable Unit  
PN – Physical Notification  
NDC - National Dispatching Center  
C1 – The market share of the largest market participant  
C3 – Total market share of top 3 market participants  
NPS – Minimum number of residual generators  
TTC – Total Transfer Capacity  
NTC – Net Transfer Capacity  
ATC – Available Transfer Capacity



**Transelectrica®**  
Societate Administrată în Sistem Dualist

According to the Commercial Code, Transelectrica, the Romanian Transmission System Operator, operates and monitors the activity of 3 types of markets: Balancing Market, Ancillary Services Market and Market for Allocation of Cross-Border Capacities.

Using the records from the markets data bases, Transelectrica prepares daily, weekly and monthly monitoring reports. A part of the data included in these reports (those data which are not confidential) is published on the websites **[www.transelectrica.ro](http://www.transelectrica.ro)**



**Transelectrica®**

**Societate Administrată în Sistem Dualist**

- According to the agreements between Transelectrica and neighbors for year 2012 :
  - ✓ on the Bulgarian border, the bilateral coordinated allocation is done for 100% of total capacity:
    - by ESO EAD for long term auctions;
    - by Transelectrica for daily and intra-day auctions. At daily and intra-day auctions it is applied the “netting” principle.
  - ✓ on the Hungarian border, the bilateral coordinated allocation, is done for 100% of total capacity:
    - by Transelectrica daily auctions and intra-day auctions;
    - by MAVIR long term auctions. At daily and intra-day auctions it is applied the “netting” principle.
  - ✓ on the Serbian border, long term auctions for 50% of total net transfer capacity are held by Transelectrica, the remaining of 50% being allocated by the neighboring TSO.
- Starting with March 2010 auctions are held on Damas platform, with euro currency trading.
- Long term auction results on the Bulgarian border (offered prices, auction prices, requested and allocated capacities) are provided by the Bulgarian TSO.
- The intra-day allocation is done in two auction sessions for time intervals: 00:00-12:00 and 12:00-24:00.
- In July, auctions were held for :
  - ✓ export Hungary (01.07 – 03.07.2012, 04.07 – 13.07.2012, 14.07 – 15.07.2012, 16.07 – 22.07.2012, 23.07 – 27.07.2012, 28.07 – 29.07.2012, 30.07 – 31.07.2012);
  - ✓ import Hungary (01.07.2012, 02.07 – 03.07.2012, 04.07 – 06.07.2012, 07.07 – 13.07.2012, 14.07 – 18.07.2012, 19.07 – 22.07.2012, 23.07 – 27.07.2012, 28.07 – 31.07.2012);
  - ✓ export Serbia (01.07 – 22.07.2012, 23.07 – 27.07.2012, 28.07 – 29.07.2012, 30.07 – 31.07.2012);
  - ✓ import Serbia (01.07 – 05.07.2012, 06.07 – 31.07.2012);



**Transelectrica®**

**Societate Administrată în Sistem Dualist**

- ✓ export / import Bulgaria (01.07 – 31.07.2012);
- ✓ import Ukraine (01.07.2012, 02.07 – 06.07.2012, 07.07 – 13.07.2012, 14.07 – 15.07.2012, 16.07 – 18.07.2012, 19.07 – 27.07.2012, 28.07 – 31.07.2012);
- Usage of allocated capacity on Ukrainian and Moldavian border is restricted by Ukrainian TSO agreement and respectively by the approval of the distribution operator of the passive consumption islands.

# Market for Allocation of Cross-Border Capacities



**Transelectrica®**

Societate Administrată în Sistem Dualist

## Monthly auction. Results of 01 - 31 July 2012

	Prices [euro/MW/h]	Capacities [MW]						
	Resultes	TTC*	NTC*	ATC	AAC	Requested	Alocated	Final Rights**
<b>Hungary export</b>								
01 - 03 July 2012	0.25	500	400	205	195	470	195	390
04 - 13 July 2012	0.25	450	350	155	195	470	155	350
14 - 15 July 2012	0.25	500	400	205	195	470	195	390
16 - 22 July 2012	0.25	450	350	155	195	470	155	350
23 - 27 July 2012	0.25	500	400	205	195	470	195	390
28 - 29 July 2012	0.25	450	350	155	195	470	155	350
30 - 31 July 2012	0.25	400	300	105	195	470	105	300
<b>Hungary import</b>								
01 July 2012	0.15	750	650	505	145	826	490	635
02 - 03 July 2012	0.15	550	450	305	145	826	304	449
04 - 06 July 2012	0.15	600	500	355	145	826	354	499
07 - 13 July 2012	0.15	750	650	505	145	826	490	635
14 - 18 July 2012	0.15	650	550	405	145	826	405	550
19 - 22 July 2012	0.15	550	450	305	145	826	304	449
23 - 27 July 2012	0.15	600	500	355	145	826	354	499
28 - 31 July 2012	0.15	750	650	505	145	826	490	635
<b>Bulgaria export</b>								
01 - 31 July 2012	3.77	300	200	10	190	-	10	200
<b>Bulgaria import</b>								
01 - 31 July 2012	0.06	400	300	150	150	-	150	300

\*\* total values

\*\*\* final rights = monthly allocated capacities + annual allocated capacities (border and direction total values) after withdrawals.

**Public**

# Market for Allocation of Cross-Border Capacities



**Transelectrica®**  
Societate Administrată în Sistem Dualist

## Monthly auction. Results of 01 - 31 July 2012

	Prices [euro/MW/h]	Capacities [MW]						
	Resultes	TTC*	NTC*	ATC	AAC	Requested	Allocated	Final Rights**
<b>Serbia export</b>								
01 - 22 July 2012	0.40	500	400	125	75	290	125	399
23 - 27 July 2012	0.34	550	450	150	75	295	150	450
28 - 29 July 2012	0.31	500	400	125	75	266	125	400
30 - 31 July 2012	1.03	400	300	75	75	262	75	299
<b>Serbia import</b>								
01 - 05 July 2012	0.13	400	300	105	45	215	105	300
06 - 31 July 2012	0.06	500	400	155	45	215	155	400
<b>Ukraine export</b>								
01 - 30 July 2012	-	150	50	0	50	-	-	50
<b>Ukraine import</b>								
01 July 2012	0.03	250	150	100	50	118	100	150
02 - 06 July 2012	0.13	200	100	50	50	88	50	100
07 - 13 July 2012	0.03	250	150	100	50	118	100	150
14 - 15 July 2012	0.13	200	100	50	50	88	50	100
16 - 18 July 2012	0.03	250	150	100	50	118	100	150
19 - 27 July 2012	0.13	200	100	50	50	88	50	100
28 - 31 July 2012	0.03	250	150	100	50	118	100	150
<b>Moldavia export</b>								
01 - 31 July 2012	-	-	-	-	-	-	-	-
<b>Moldavia import</b>								
01 - 31 July 2012	-	175	175	0	175	-	-	175

\*\* total values

\*\*\* final rights = monthly allocated capacities + annual allocated capacities (border and direction total values) after withdrawals.

Note: Values of ATC, AAC, Requested and Allocated capacities on Serbian border are related to auctions organized by Romanian TSO

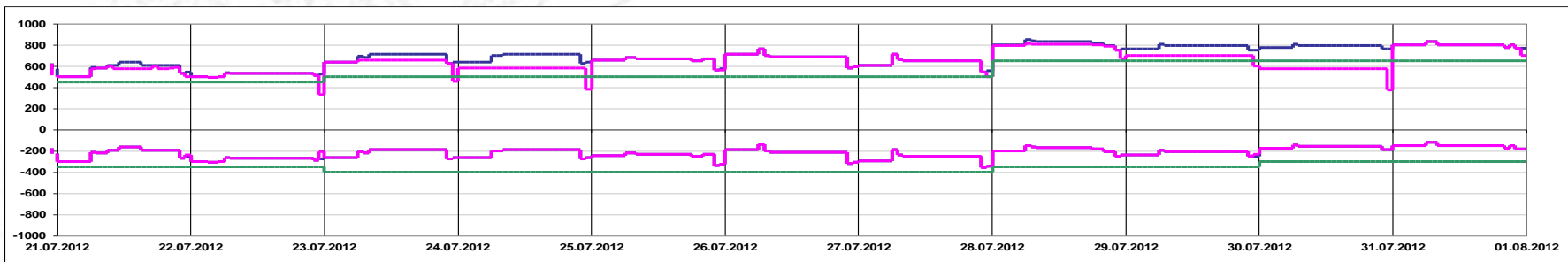
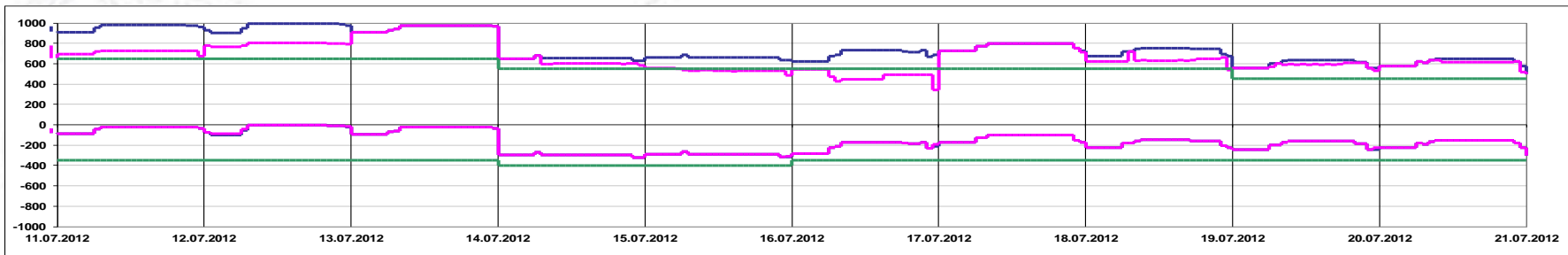
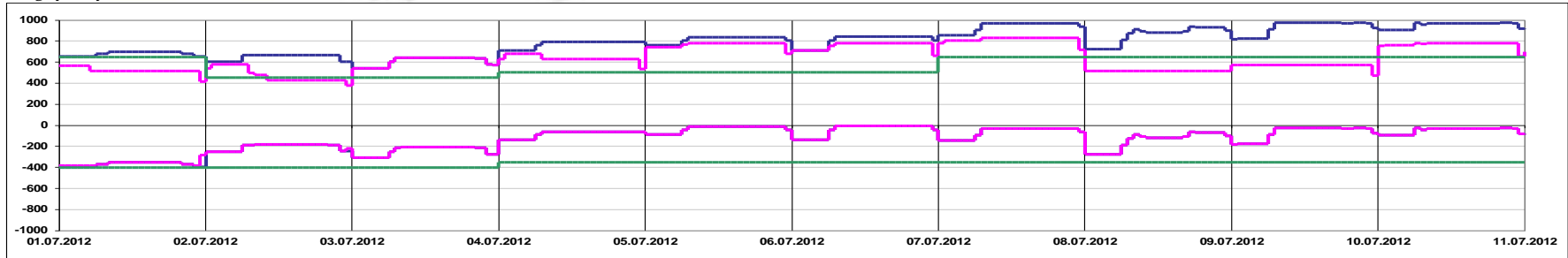
**Public**



**Transelectrica®**  
Societate Administrată în Sistem Dualist

## Daily Auctions on Romanian – Hungarian border

Hungary July 2012



Offered Capacity on Daily Auction Import (+) / Export (-) [MW]

Allocated Capacity on Daily Auction Import (+) / Export (-) [MW]

Net Transfer Capacity (NTC) Import (+) / Export (-) [MW]

Public





**Transelectrica®**  
Societate Administrată în Sistem Dualist

# Market for Allocation of Cross-Border Capacities

## Daily Auctions on Romanian – Hungarian border

### Auction Price [Euro/MW/h] - Export

day	1	2	3	4	5	6	7	8	9	10	11	12	13	14	15	16	17	18	19	20	21	22	23	24	Max		
1	0.00	0.00	0.00	0.00	0.00	0.00	0.03	0.03	0.03	0.03	0.03	0.03	0.03	0.03	0.03	0.03	0.03	0.03	0.03	0.03	0.03	0.03	0.00	0.00	0.03		
2	0.04	0.04	0.04	0.04	0.04	0.04	0.05	0.05	0.05	0.26	0.51	0.51	0.51	0.30	0.30	0.30	0.30	0.05	0.05	0.05	0.26	0.50	0.05	0.00	0.51		
3	0.24	0.24	0.24	0.24	0.24	0.24	0.33	1.16	3.00	4.11	8.00	8.08	8.08	8.08	8.08	8.08	8.00	8.00	1.23	1.23	2.16	2.16	0.56	0.24	8.08		
4	2.56	2.56	0.22	0.22	0.20	0.22	1.23	15.55	20.05	21.10	25.00	25.00	25.00	25.00	25.00	25.00	25.00	21.10	20.05	20.05	25.00	25.00	21.10	25.00	25.00		
5	0.26	0.27	0.27	0.27	0.27	0.27	4.71	15.00	18.20	18.20	18.20	18.20	18.20	18.20	18.20	18.20	18.20	18.20	18.20	18.20	15.55	15.55	15.00	0.25	18.20		
6	0.03	0.03	0.03	0.03	0.03	0.03	0.31	0.56	5.00	5.00	5.00	5.00	5.00	5.00	5.00	5.00	5.00	5.00	5.00	5.00	4.00	4.00	4.00	0.55	5.00		
7	0.05	0.05	0.05	0.05	0.05	0.05	0.10	3.00	3.55	3.55	3.55	3.55	3.55	3.55	3.55	3.55	3.55	3.55	3.55	3.55	3.55	3.55	3.00	3.00	3.00	0.20	3.55
8	0.03	0.03	0.03	0.03	0.03	0.03	0.03	0.03	0.10	0.03	0.03	0.03	0.03	0.03	0.03	0.03	0.03	0.10	0.10	0.10	0.10	0.10	0.10	0.01	0.10	0.10	
9	0.05	0.05	0.05	0.05	0.05	0.05	0.05	0.55	0.55	0.55	3.31	3.31	3.31	3.31	3.31	3.31	3.31	0.55	0.15	0.15	0.55	3.31	3.31	0.01	3.31	3.31	
10	0.53	0.53	0.53	0.53	0.53	0.53	3.56	3.30	7.50	8.16	8.16	9.80	9.50	9.50	9.50	9.50	9.50	8.16	7.50	7.50	8.16	8.16	6.24	0.94	9.80	9.80	
11	0.30	0.30	0.30	0.30	0.30	0.30	0.55	2.51	4.51	4.51	4.51	8.00	4.51	8.00	8.00	8.00	8.00	4.51	4.51	4.51	3.10	2.56	2.56	1.56	8.00	8.00	
12	0.01	0.00	0.00	0.00	0.00	0.00	0.00	0.56	0.56	5.00	5.00	5.00	5.00	5.00	5.00	5.00	0.56	0.56	0.56	0.56	0.56	0.56	1.55	0.00	5.00	5.00	
13	0.12	0.12	0.12	0.12	0.12	0.12	0.12	0.09	2.25	2.25	2.25	2.25	2.25	2.25	2.25	2.25	2.25	2.25	2.25	2.25	2.25	3.11	6.15	1.51	0.12	6.15	
14	0.03	0.03	0.03	0.03	0.03	0.03	0.05	0.03	0.03	0.03	0.03	0.03	0.03	0.03	0.03	0.03	0.03	0.03	0.03	0.03	0.03	0.03	0.03	0.01	0.05	0.05	
15	0.05	0.05	0.05	0.05	0.05	0.05	0.05	0.05	0.05	0.05	0.05	0.05	0.05	0.05	0.05	0.05	0.05	0.05	0.05	0.05	0.11	0.11	0.05	0.00	0.11	0.11	
16	0.03	0.03	0.03	0.03	0.03	0.03	0.05	0.15	0.15	0.15	0.15	0.15	0.15	0.15	0.15	0.15	0.15	0.15	0.15	0.10	0.10	0.30	0.05	0.00	0.30	0.30	
17	0.05	0.05	0.05	0.05	0.05	0.05	0.06	0.12	0.21	0.21	0.21	0.21	0.21	0.21	0.21	0.21	0.21	0.21	0.21	0.21	0.21	0.21	0.21	0.06	0.01	0.21	0.21
18	0.05	0.05	0.05	0.05	0.05	0.05	0.05	0.05	0.10	0.50	0.50	0.50	0.50	0.50	0.50	0.50	0.50	0.10	0.10	0.10	0.25	0.25	0.05	0.03	0.50	0.50	
19	0.03	0.03	0.03	0.03	0.03	0.03	0.09	0.09	0.15	0.15	0.15	0.25	0.25	0.25	0.15	0.15	0.15	0.15	0.15	0.15	0.15	0.15	0.03	0.00	0.25	0.25	
20	0.10	0.10	0.10	0.10	0.10	0.10	0.33	0.15	0.25	0.25	0.25	0.25	0.25	0.25	0.25	0.25	0.25	0.25	0.25	0.25	0.25	0.55	0.10	0.02	0.55	0.55	
21	0.03	0.03	0.03	0.03	0.03	0.03	0.15	0.15	0.12	0.15	0.15	0.33	0.33	0.33	0.33	0.15	0.15	0.15	0.15	0.15	0.15	0.15	0.03	0.00	0.33	0.33	
22	0.03	0.03	0.03	0.00	0.00	0.03	0.03	0.03	0.03	0.03	0.03	0.03	0.03	0.03	0.03	0.03	0.03	0.03	0.03	0.03	0.03	0.03	0.03	0.00	0.03	0.03	
23	0.05	0.05	0.05	0.05	0.05	0.05	0.15	0.05	0.15	0.15	0.15	0.15	0.15	0.15	0.15	0.15	0.15	0.15	0.15	0.15	0.15	0.15	0.03	0.03	0.15	0.15	
24	0.45	0.45	0.45	0.45	0.45	0.45	0.45	0.45	0.45	0.45	0.45	0.45	0.45	0.45	0.45	0.45	0.45	0.45	0.55	0.55	0.45	0.45	0.10	0.05	0.55	0.55	
25	0.86	0.86	0.86	0.86	0.86	0.86	0.86	0.66	0.39	0.39	0.39	0.39	0.30	0.30	0.30	0.30	0.39	0.39	0.39	0.39	0.39	0.39	0.39	0.05	0.86	0.86	
26	0.73	0.73	0.73	0.73	0.73	0.73	0.66	0.33	0.33	0.33	0.15	0.15	0.15	0.15	0.15	0.15	0.15	0.15	0.15	0.33	0.15	0.15	0.05	0.01	0.73	0.73	
27	0.33	0.33	0.33	0.33	0.33	0.33	0.45	0.36	0.45	0.45	0.45	0.45	0.45	0.45	0.45	0.45	0.45	0.45	0.45	0.45	0.45	0.45	0.36	0.05	0.45	0.45	
28	0.05	0.05	0.05	0.05	0.05	0.05	0.21	0.21	0.21	0.21	0.55	0.55	0.55	0.55	0.55	0.55	0.21	0.21	0.20	0.20	0.05	0.05	0.05	0.00	0.55	0.55	
29	0.05	0.05	0.05	0.05	0.05	0.05	0.05	0.05	0.05	0.05	0.05	0.05	0.05	0.05	0.05	0.05	0.05	0.05	0.05	0.05	0.05	0.05	0.05	0.00	0.05	0.05	
30	0.30	0.30	0.30	0.30	0.30	0.30	0.33	0.33	0.30	0.30	0.30	0.30	0.30	0.30	0.30	0.30	0.30	0.30	0.30	0.30	0.30	0.30	0.30	0.07	0.03	0.33	0.33
31	0.25	0.25	0.25	0.25	0.25	0.25	0.33	0.33	0.30	0.30	0.30	0.30	0.30	0.33	0.33	0.33	0.33	0.30	0.33	0.33	0.33	0.30	0.10	0.10	0.33	0.33	

Hungary export July 2012



**Transelectrica®**  
Societate Administrată în Sistem Dualist

# Market for Allocation of Cross-Border Capacities

## Daily Auctions on Romanian – Hungarian border

### Auction Price [Euro/MW/h] - Import

day	1	2	3	4	5	6	7	8	9	10	11	12	13	14	15	16	17	18	19	20	21	22	23	24	Max		
1	0.00	0.00	0.00	0.00	0.00	0.00	0.00	0.00	0.00	0.00	0.00	0.00	0.00	0.00	0.00	0.00	0.00	0.00	0.00	0.00	0.00	0.00	0.00	0.00	0.00	0.00	
2	0.00	0.00	0.00	0.00	0.00	0.00	0.00	0.00	0.00	0.00	0.00	0.00	0.00	0.00	0.00	0.00	0.00	0.00	0.00	0.00	0.00	0.00	0.00	0.00	0.00	0.00	
3	0.21	0.21	0.21	0.21	0.21	0.21	0.02	0.01	0.01	0.01	0.01	0.01	0.01	0.01	0.01	0.01	0.01	0.01	0.01	0.01	0.01	0.01	0.01	0.01	0.01	0.21	
4	0.00	0.00	0.00	0.00	0.00	0.00	0.00	0.00	0.00	0.00	0.00	0.00	0.00	0.00	0.00	0.00	0.00	0.00	0.00	0.00	0.00	0.00	0.00	0.00	0.00	0.00	
5	0.00	0.00	0.00	0.00	0.00	0.00	0.00	0.00	0.00	0.00	0.00	0.00	0.00	0.00	0.00	0.00	0.00	0.00	0.00	0.00	0.00	0.00	0.00	0.00	0.00	0.00	
6	0.00	0.00	0.00	0.00	0.00	0.00	0.00	0.00	0.00	0.00	0.00	0.00	0.00	0.00	0.00	0.00	0.00	0.00	0.00	0.00	0.00	0.00	0.00	0.00	0.00	0.00	
7	0.00	0.00	0.00	0.00	0.00	0.00	0.00	0.00	0.00	0.00	0.00	0.00	0.00	0.00	0.00	0.00	0.00	0.00	0.00	0.00	0.00	0.00	0.00	0.00	0.00	0.00	
8	0.00	0.00	0.00	0.00	0.00	0.00	0.00	0.00	0.00	0.00	0.00	0.00	0.00	0.00	0.00	0.00	0.00	0.00	0.00	0.00	0.00	0.00	0.00	0.00	0.00	0.00	
9	0.00	0.00	0.00	0.00	0.00	0.00	0.00	0.00	0.00	0.00	0.00	0.00	0.00	0.00	0.00	0.00	0.00	0.00	0.00	0.00	0.00	0.00	0.00	0.00	0.00	0.00	
10	0.00	0.00	0.00	0.00	0.00	0.00	0.00	0.00	0.00	0.00	0.00	0.00	0.00	0.00	0.00	0.00	0.00	0.00	0.00	0.00	0.00	0.00	0.00	0.00	0.00	0.00	
11	0.00	0.00	0.00	0.00	0.00	0.00	0.00	0.00	0.00	0.00	0.00	0.00	0.00	0.00	0.00	0.00	0.00	0.00	0.00	0.00	0.00	0.00	0.00	0.00	0.00	0.00	
12	0.00	0.00	0.00	0.00	0.00	0.00	0.00	0.00	0.00	0.00	0.00	0.00	0.00	0.00	0.00	0.00	0.00	0.00	0.00	0.00	0.00	0.00	0.00	0.00	0.00	0.00	
13	0.01	0.01	0.02	0.02	0.02	0.01	0.01	0.01	0.01	0.01	0.01	0.01	0.01	0.01	0.01	0.01	0.01	0.01	0.01	0.01	0.01	0.01	0.01	0.01	0.01	0.02	
14	0.03	0.05	0.05	0.05	0.05	0.05	0.03	0.00	0.00	0.00	0.00	0.00	0.00	0.00	0.00	0.00	0.00	0.00	0.00	0.00	0.00	0.00	0.00	0.00	0.00	0.05	
15	0.00	0.00	0.00	0.00	0.00	0.00	0.00	0.00	0.00	0.00	0.00	0.00	0.00	0.00	0.00	0.00	0.00	0.00	0.00	0.00	0.00	0.00	0.00	0.00	0.00	0.00	
16	0.00	0.00	0.00	0.00	0.00	0.00	0.00	0.00	0.00	0.00	0.00	0.00	0.00	0.00	0.00	0.00	0.00	0.00	0.00	0.00	0.00	0.00	0.00	0.00	0.00	0.00	
17	0.03	0.03	0.03	0.03	0.03	0.03	0.01	0.01	0.01	0.01	0.01	0.01	0.01	0.01	0.01	0.01	0.01	0.01	0.01	0.01	0.01	0.01	0.01	0.01	0.00	0.03	
18	0.00	0.00	0.00	0.00	0.00	0.00	0.00	0.01	0.00	0.00	0.00	0.00	0.00	0.00	0.00	0.00	0.00	0.00	0.00	0.00	0.00	0.00	0.00	0.00	0.00	0.01	
19	0.02	0.02	0.02	0.02	0.02	0.01	0.01	0.01	0.00	0.00	0.00	0.00	0.00	0.00	0.00	0.00	0.00	0.00	0.00	0.00	0.00	0.00	0.00	0.01	0.00	0.02	
20	0.02	0.02	0.02	0.02	0.02	0.02	0.01	0.01	0.00	0.00	0.00	0.00	0.00	0.00	0.00	0.00	0.00	0.00	0.00	0.00	0.00	0.00	0.00	0.01	0.00	0.02	
21	0.03	0.03	0.03	0.03	0.03	0.03	0.00	0.01	0.01	0.00	0.00	0.00	0.00	0.00	0.00	0.00	0.00	0.00	0.00	0.00	0.00	0.00	0.00	0.02	0.00	0.03	
22	0.01	0.01	0.01	0.01	0.01	0.01	0.00	0.00	0.00	0.00	0.00	0.00	0.00	0.00	0.00	0.00	0.00	0.00	0.00	0.00	0.00	0.00	0.00	0.01	0.00	0.01	
23	0.02	0.02	0.02	0.02	0.02	0.02	0.00	0.00	0.00	0.00	0.00	0.00	0.00	0.00	0.00	0.00	0.00	0.00	0.00	0.00	0.00	0.00	0.00	0.02	0.00	0.02	
24	0.00	0.00	0.00	0.00	0.00	0.00	0.00	0.00	0.00	0.00	0.00	0.00	0.00	0.00	0.00	0.00	0.00	0.00	0.00	0.00	0.00	0.00	0.00	0.00	0.00	0.00	
25	0.01	0.01	0.01	0.01	0.01	0.01	0.01	0.01	0.01	0.01	0.01	0.01	0.01	0.01	0.01	0.01	0.01	0.01	0.01	0.01	0.01	0.01	0.01	0.01	0.01	0.00	0.01
26	0.01	0.01	0.01	0.01	0.01	0.01	0.01	0.01	0.01	0.01	0.01	0.01	0.01	0.01	0.01	0.01	0.01	0.01	0.01	0.01	0.01	0.01	0.01	0.01	0.01	0.01	0.01
27	0.01	0.01	0.01	0.01	0.01	0.01	0.01	0.01	0.01	0.01	0.01	0.01	0.01	0.01	0.01	0.01	0.01	0.01	0.01	0.01	0.01	0.01	0.01	0.01	0.01	0.00	0.01
28	0.00	0.00	0.00	0.00	0.00	0.00	0.00	0.00	0.00	0.00	0.00	0.00	0.00	0.00	0.00	0.00	0.00	0.00	0.00	0.00	0.00	0.00	0.00	0.00	0.02	0.00	0.02
29	0.00	0.00	0.00	0.00	0.00	0.00	0.00	0.00	0.00	0.00	0.00	0.00	0.00	0.00	0.00	0.00	0.00	0.00	0.00	0.00	0.00	0.00	0.00	0.00	0.00	0.00	0.00
30	0.00	0.00	0.00	0.00	0.00	0.00	0.00	0.00	0.00	0.00	0.00	0.00	0.00	0.00	0.00	0.00	0.00	0.00	0.00	0.00	0.00	0.00	0.00	0.00	0.00	0.00	0.00
31	0.01	0.01	0.01	0.01	0.01	0.01	0.01	0.00	0.02	0.02	0.02	0.02	0.01	0.01	0.01	0.01	0.01	0.01	0.01	0.01	0.01	0.01	0.01	0.01	0.01	0.00	0.02

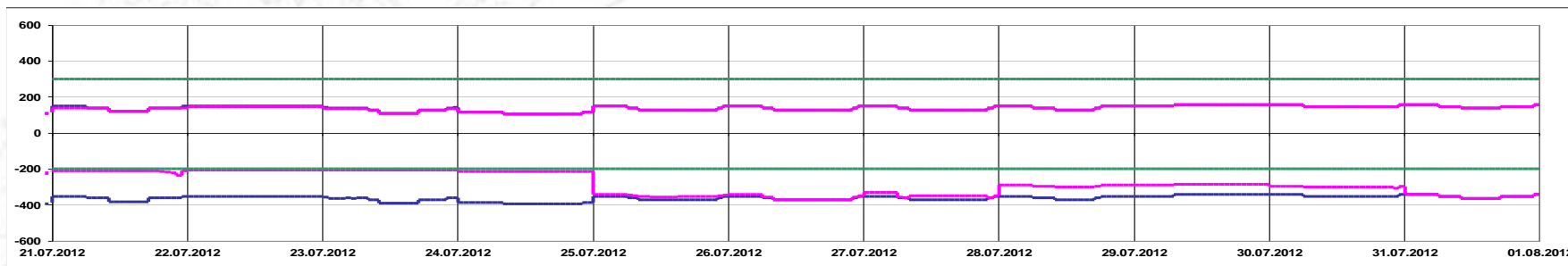
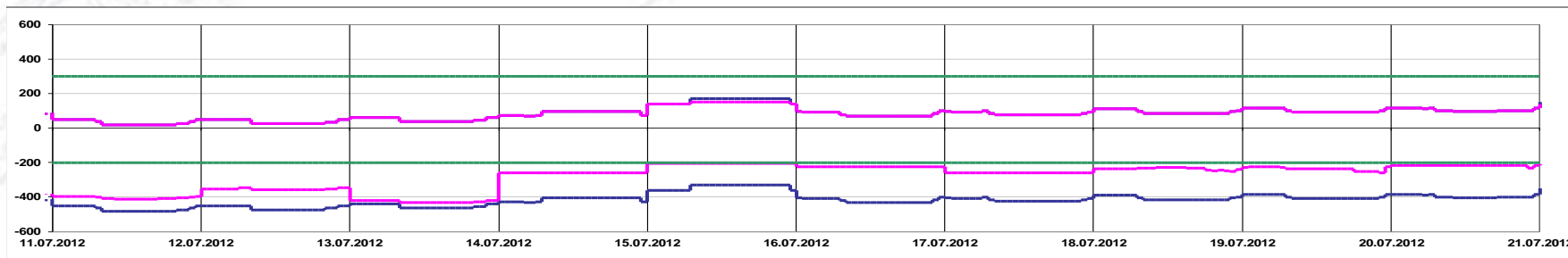
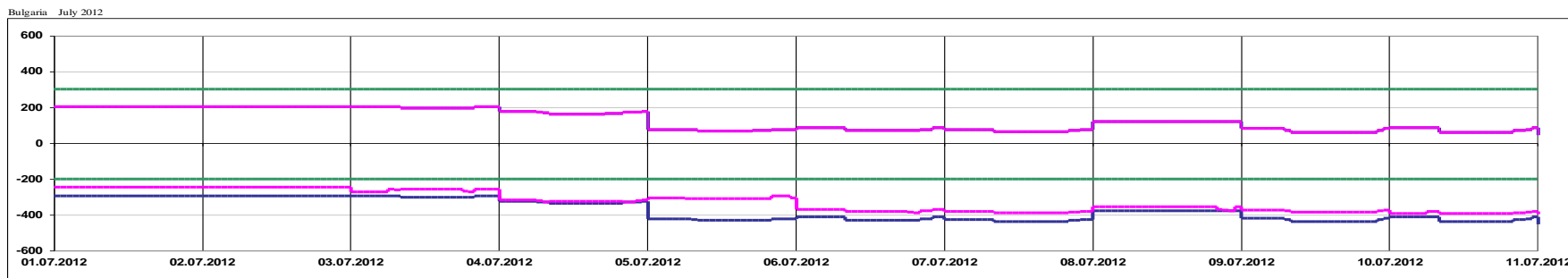
Hungary import July 2012

Public



Transelectrica®  
Societate Administrată în Sistem Dualist

## Daily Auctions on Romanian – Bulgarian border



Offered Capacity on Daily Auction Import (+) / Export (-) [MW]

Allocated Capacity on Daily Auction Import (+) / Export (-) [MW]

Net Transfer Capacity (NTC) Import (+) / Export (-) [MW]

Public





**Transelectrica®**  
Societate Administrată în Sistem Dualist

# Market for Allocation of Cross-Border Capacities

## Daily Auctions on Romanian – Bulgarian border

### Auction Price [Euro/MW/h] – Import

day	1	2	3	4	5	6	7	8	9	10	11	12	13	14	15	16	17	18	19	20	21	22	23	24	Max	
1	0.03	0.03	0.03	0.03	0.03	0.03	0.03	0.03	0.03	0.03	0.03	0.03	0.03	0.03	0.03	0.03	0.03	0.03	0.03	0.03	0.03	0.03	0.03	0.03	0.03	0.03
2	0.03	0.03	0.03	0.03	0.03	0.03	0.03	0.03	0.03	0.03	0.03	0.03	0.03	0.03	0.03	0.03	0.03	0.03	0.03	0.03	0.03	0.03	0.03	0.03	0.03	0.03
3	0.03	0.03	0.03	0.03	0.03	0.03	0.05	0.05	0.05	0.05	0.05	0.05	0.05	0.05	0.05	0.05	0.05	0.05	0.05	0.05	0.03	0.03	0.03	0.03	0.03	0.05
4	0.03	0.03	0.03	0.03	0.03	0.03	0.11	0.11	1.01	1.01	2.21	2.21	2.21	2.21	2.21	2.21	2.21	2.21	1.01	1.01	0.11	0.11	0.11	0.11	0.11	2.21
5	0.01	0.01	0.01	0.01	0.01	0.01	0.01	0.01	0.05	0.05	0.05	0.05	0.05	0.05	0.05	0.05	0.05	0.05	0.05	0.05	0.01	0.01	0.01	0.01	0.01	0.05
6	0.03	0.03	0.03	0.03	0.03	0.03	0.03	0.03	0.05	0.05	0.05	0.05	0.05	0.05	0.05	0.05	0.05	0.05	0.05	0.05	0.05	0.04	0.04	0.03	0.03	0.05
7	0.10	0.10	0.10	0.10	0.10	0.10	0.10	0.10	0.13	0.13	0.13	0.13	0.13	0.13	0.13	0.13	0.13	0.13	0.13	0.13	0.13	0.12	0.12	0.10	0.10	0.13
8	0.05	0.05	0.05	0.05	0.05	0.05	0.05	0.05	0.05	0.05	0.05	0.05	0.05	0.05	0.05	0.05	0.05	0.05	0.05	0.05	0.05	0.05	0.05	0.05	0.05	0.05
9	0.05	0.05	0.05	0.05	0.05	0.05	0.05	0.05	0.13	0.13	0.13	0.13	0.13	0.13	0.13	0.13	0.13	0.13	0.13	0.13	0.13	0.13	0.13	0.13	0.13	0.13
10	0.06	0.06	0.06	0.06	0.06	0.06	0.06	0.06	0.50	0.50	0.50	0.50	0.50	0.50	0.50	0.50	0.50	0.50	1.11	1.11	0.10	0.10	0.10	0.10	0.06	1.11
11	0.01	0.01	0.01	0.01	0.01	0.01	0.01	0.13	2.50	2.50	3.55	3.55	3.55	3.55	3.55	3.55	3.55	2.50	11.30	11.30	1.10	1.10	0.13	0.13	11.30	11.30
12	0.01	0.01	0.01	0.01	0.01	0.01	0.01	0.01	0.56	0.56	0.56	0.56	0.56	0.56	0.56	0.56	0.56	0.56	1.00	1.00	0.56	0.56	0.56	0.03	1.00	1.00
13	0.50	0.50	0.50	0.50	0.50	0.50	0.50	0.56	1.50	1.50	1.50	1.50	1.50	1.50	1.50	1.50	1.50	2.00	2.00	2.00	1.50	1.50	1.15	0.56	2.00	2.00
14	0.05	0.05	0.05	0.05	0.05	0.05	0.05	0.05	0.13	0.13	0.13	0.13	0.13	0.13	0.13	0.05	0.05	0.05	0.05	0.05	0.05	0.05	0.05	0.05	0.05	0.13
15	0.01	0.01	0.01	0.01	0.01	0.01	0.01	0.00	0.00	0.00	0.00	0.00	0.00	0.00	0.00	0.00	0.00	0.00	0.00	0.00	0.00	0.00	0.00	0.00	0.00	0.01
16	0.05	0.05	0.05	0.05	0.05	0.05	0.05	0.06	0.13	0.13	0.13	0.13	0.13	0.13	0.13	0.13	0.13	0.13	0.13	0.13	0.13	0.13	0.13	0.13	0.05	0.13
17	0.05	0.05	0.05	0.05	0.05	0.05	0.05	0.05	0.06	0.06	0.06	0.06	0.06	0.06	0.06	0.06	0.06	0.06	0.06	0.06	0.06	0.06	0.06	0.05	0.05	0.06
18	0.02	0.02	0.02	0.02	0.02	0.02	0.02	0.05	0.05	0.05	0.05	0.05	0.05	0.05	0.05	0.05	0.05	0.05	0.05	0.05	0.05	0.05	0.05	0.05	0.05	0.05
19	0.02	0.02	0.02	0.02	0.02	0.02	0.02	0.02	0.02	0.02	0.02	0.02	0.02	0.02	0.02	0.02	0.02	0.02	0.02	0.02	0.02	0.02	0.02	0.02	0.02	0.02
20	0.02	0.02	0.02	0.02	0.02	0.02	0.02	0.03	0.03	0.03	0.03	0.03	0.03	0.03	0.03	0.03	0.03	0.03	0.03	0.03	0.03	0.03	0.03	0.03	0.03	0.03
21	0.00	0.00	0.00	0.00	0.00	0.00	0.01	0.01	0.01	0.01	0.03	0.03	0.03	0.03	0.03	0.03	0.03	0.01	0.01	0.01	0.01	0.01	0.01	0.01	0.00	0.03
22	0.00	0.00	0.00	0.00	0.00	0.00	0.00	0.00	0.00	0.00	0.00	0.00	0.00	0.00	0.00	0.00	0.00	0.00	0.00	0.00	0.00	0.00	0.00	0.00	0.00	0.00
23	0.00	0.00	0.00	0.00	0.00	0.00	0.00	0.00	0.02	0.02	0.02	0.02	0.02	0.02	0.02	0.02	0.02	0.02	0.02	0.02	0.02	0.02	0.02	0.00	0.00	0.02
24	0.02	0.02	0.02	0.02	0.02	0.02	0.02	0.02	0.03	0.03	0.03	0.03	0.03	0.03	0.03	0.03	0.03	0.03	0.03	0.03	0.03	0.03	0.03	0.02	0.02	0.03
25	0.01	0.01	0.01	0.01	0.01	0.01	0.01	0.01	0.02	0.02	0.02	0.02	0.02	0.02	0.02	0.02	0.02	0.02	0.02	0.02	0.02	0.02	0.02	0.01	0.02	0.02
26	0.01	0.01	0.01	0.01	0.01	0.01	0.02	0.02	0.02	0.02	0.02	0.02	0.02	0.02	0.02	0.02	0.02	0.02	0.02	0.02	0.02	0.02	0.02	0.02	0.01	0.02
27	0.01	0.01	0.01	0.01	0.01	0.01	0.03	0.03	0.03	0.03	0.03	0.03	0.03	0.03	0.03	0.03	0.03	0.03	0.03	0.03	0.03	0.03	0.03	0.03	0.01	0.03
28	0.05	0.05	0.05	0.05	0.05	0.05	0.05	0.05	0.05	0.05	0.05	0.05	0.05	0.05	0.05	0.05	0.05	0.05	0.05	0.05	0.05	0.05	0.05	0.05	0.05	0.05
29	0.01	0.01	0.01	0.01	0.01	0.01	0.01	0.01	0.01	0.01	0.01	0.01	0.01	0.01	0.01	0.01	0.01	0.01	0.01	0.01	0.01	0.01	0.01	0.01	0.01	0.01
30	0.03	0.03	0.03	0.03	0.03	0.03	0.03	0.03	0.03	0.03	0.03	0.03	0.03	0.03	0.03	0.03	0.03	0.03	0.03	0.03	0.03	0.03	0.03	0.03	0.03	0.03
31	0.03	0.03	0.03	0.03	0.03	0.03	0.03	0.03	0.03	0.03	0.03	0.03	0.03	0.03	0.03	0.03	0.03	0.03	0.03	0.03	0.03	0.03	0.03	0.03	0.03	0.03

Bulgaria import July 2012



**Transelectrica®**  
Societate Administrată în Sistem Dualist

# Market for Allocation of Cross-Border Capacities

## Statistics on Monthly Auction

Jul.2012		1	2	3	4	5	6	7	8	9	10	11	12	13	14	15	16	17	18	19	20	21	22	23	24	25	26	27	28	29	30	31	
Hungary export	Number of Participants	13	13	13	13	13	13	13	13	13	13	13	13	13	13	13	13	13	13	13	13	13	13	13	13	13	13	13	13	13	13	13	
	Number of Capacity Holders	7	7	7	7	7	7	7	7	7	7	7	7	7	7	7	7	7	7	7	7	7	7	7	7	7	7	7	7	7	7	7	
	Number of Bids	44	44	44	44	44	44	44	44	44	44	44	44	44	44	44	44	44	44	44	44	44	44	44	44	44	44	44	44	44	44	44	
Hungary import	Number of Participants	18	18	18	18	18	18	18	18	18	18	18	18	18	18	18	18	18	18	18	18	18	18	18	18	18	18	18	18	18	18	18	
	Number of Capacity Holders	14	14	14	14	14	14	14	14	14	14	14	14	14	14	14	14	14	14	14	14	14	14	14	14	14	14	14	14	14	14	14	
	Number of Bids	57	57	57	57	57	57	57	57	57	57	57	57	57	57	57	57	57	57	57	57	57	57	57	57	57	57	57	57	57	57	57	
Bulgaria export	Number of Participants	-	-	-	-	-	-	-	-	-	-	-	-	-	-	-	-	-	-	-	-	-	-	-	-	-	-	-	-	-	-	-	
	Number of Capacity Holders	2	2	2	2	2	2	2	2	2	2	2	2	2	2	2	2	2	2	2	2	2	2	2	2	2	2	2	2	2	2	2	
	Number of Bids	-	-	-	-	-	-	-	-	-	-	-	-	-	-	-	-	-	-	-	-	-	-	-	-	-	-	-	-	-	-	-	
Bulgaria import	Number of Participants	-	-	-	-	-	-	-	-	-	-	-	-	-	-	-	-	-	-	-	-	-	-	-	-	-	-	-	-	-	-	-	
	Number of Capacity Holders	10	10	10	10	10	10	10	10	10	10	10	10	10	10	10	10	10	10	10	10	10	10	10	10	10	10	10	10	10	10	10	
	Number of Bids	-	-	-	-	-	-	-	-	-	-	-	-	-	-	-	-	-	-	-	-	-	-	-	-	-	-	-	-	-	-	-	
Serbia export	Number of Participants	11	11	11	11	11	11	11	11	11	11	11	11	11	11	11	11	11	11	11	11	11	11	11	11	11	11	11	11	11	11	11	
	Number of Capacity Holders	8	8	8	8	8	8	8	8	8	8	8	8	8	8	8	8	8	8	8	8	8	8	8	8	8	8	8	8	9	9	5	5
	Number of Bids	26	26	26	26	26	26	26	26	26	26	26	26	26	26	26	26	26	26	26	26	26	26	26	26	26	26	26	24	24	23	23	
Serbia import	Number of Participants	10	10	10	10	10	10	10	10	10	10	10	10	10	10	10	10	10	10	10	10	10	10	10	10	10	10	10	10	10	10	10	
	Number of Capacity Holders	6	6	6	6	6	9	9	9	9	9	9	9	9	9	9	9	9	9	9	9	9	9	9	9	9	9	9	9	9	9	9	
	Number of Bids	20	20	20	20	20	20	20	20	20	20	20	20	20	20	20	20	20	20	20	20	20	20	20	20	20	20	20	20	20	20	20	
Ukraine export	Number of Participants	-	-	-	-	-	-	-	-	-	-	-	-	-	-	-	-	-	-	-	-	-	-	-	-	-	-	-	-	-	-	-	
	Number of Capacity Holders	-	-	-	-	-	-	-	-	-	-	-	-	-	-	-	-	-	-	-	-	-	-	-	-	-	-	-	-	-	-	-	
	Number of Bids	-	-	-	-	-	-	-	-	-	-	-	-	-	-	-	-	-	-	-	-	-	-	-	-	-	-	-	-	-	-	-	
Ukraine import	Number of Participants	4	4	4	4	4	4	4	4	4	4	4	4	4	4	4	4	4	4	4	4	4	4	4	4	4	4	4	4	4	4	4	
	Number of Capacity Holders	4	3	3	3	3	3	4	4	4	4	4	4	4	3	3	4	4	4	3	3	3	3	3	3	3	3	3	3	4	4	4	4
	Number of Bids	14	11	11	11	11	11	14	14	14	14	14	14	14	11	11	14	14	14	11	11	11	11	11	11	11	11	11	14	14	14	14	

Jul.2012	Maxim	Minim
Number of Participants	18	4
Number of Capacity Holders	14	2
Number of Bids	57	11

Note: Information regarding number of participants and number of bids on Bulgarian border are not detained by the Romanian TSO

# Market for Allocation of Cross-Border Capacities



**Transelectrica®**  
Societate Administrată în Sistem Dualist

## Statistics on Daily Auctions

July 2012		Daily Auctions																														
		1	2	3	4	5	6	7	8	9	10	11	12	13	14	15	16	17	18	19	20	21	22	23	24	25	26	27	28	29	30	31
Hungary Export	<b>Number of Participants</b>	4	6	10	12	10	7	10	6	7	9	8	6	9	7	6	4	7	8	8	9	7	6	6	8	9	8	8	6	5	5	8
	<b>Number of Capacity Holders</b>	4	5	6	5	3	4	6	4	4	5	4	5	5	7	6	4	6	6	6	7	6	6	6	6	7	6	7	6	5	5	6
	<b>Number of Bids</b>	10	14	27	22	12	7	16	11	12	14	9	6	10	15	15	11	14	13	14	16	12	7	10	14	21	14	16	12	8	9	13
Hungary Import	<b>Number of Participants</b>	5	4	11	8	7	8	8	6	7	8	7	9	11	11	6	5	10	10	9	9	10	7	6	8	10	10	10	9	6	6	10
	<b>Number of Capacity Holders</b>	5	4	9	8	7	8	8	6	7	8	7	9	11	11	6	5	10	9	9	9	10	7	6	8	10	9	8	9	6	6	10
	<b>Number of Bids</b>	14	13	25	17	14	15	17	11	13	14	12	14	23	24	14	12	26	19	18	16	17	11	12	13	16	16	14	14	9	8	17
Bulgaria Export	<b>Number of Participants</b>	5	5	6	4	5	5	6	5	5	6	6	7	7	5	4	5	6	7	7	5	6	5	5	6	6	7	7	5	5	6	8
	<b>Number of Capacity Holders</b>	5	5	6	4	5	5	6	5	5	6	6	7	7	5	4	5	6	7	7	5	6	5	5	6	6	7	7	5	5	6	7
	<b>Number of Bids</b>	10	10	11	10	10	10	9	9	8	9	9	9	11	10	7	8	8	9	9	7	8	6	6	9	9	10	10	7	7	9	13
Bulgaria Import	<b>Number of Participants</b>	5	5	6	8	5	5	4	4	4	6	7	6	9	7	4	4	6	5	5	4	5	5	4	4	7	4	5	4	4	4	
	<b>Number of Capacity Holders</b>	5	5	6	7	5	5	4	4	4	5	6	5	6	5	4	4	6	5	5	4	5	5	4	3	6	4	4	3	4	4	4
	<b>Number of Bids</b>	10	10	11	14	7	9	7	10	9	11	7	8	14	9	9	8	8	8	9	8	8	7	7	8	10	6	7	5	5	5	

Note:

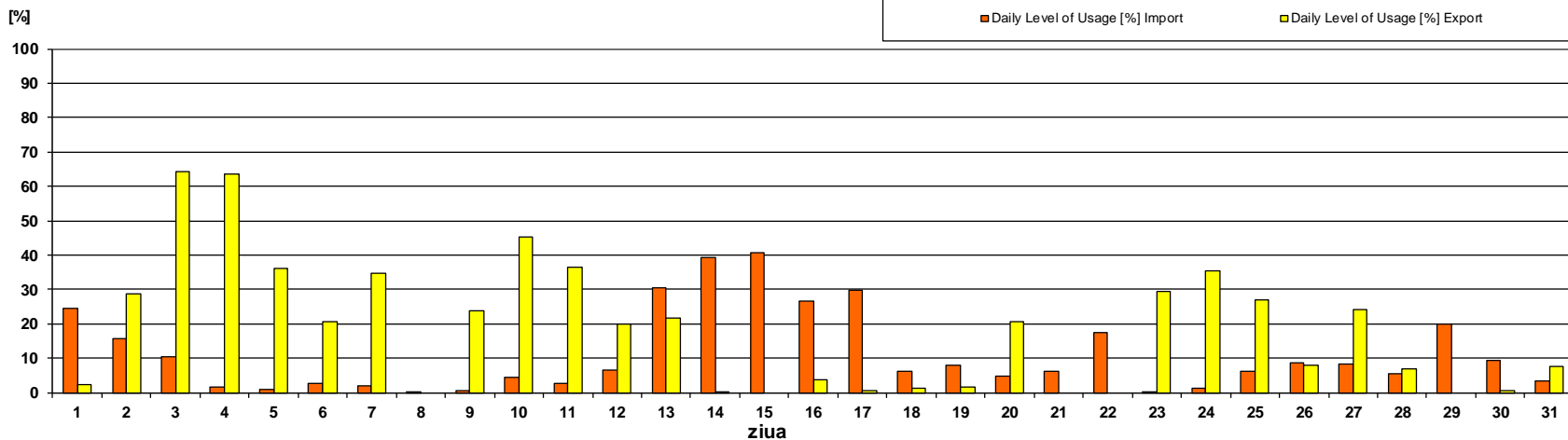
- In the table are represented the daily maximum hourly values.

# Market for Allocation of Cross-Border Capacities



## Daily Auctions on Romanian – Hungarian border Usage Level of Daily Allocated Capacity

Hungary July 2012



Daily Level of Usage [%]

July 2012	1	2	3	4	5	6	7	8	9	10	11	12	13	14	15	16	17	18	19	20	21	22	23	24	25	26	27	28	29	30	31
Import	24.49	15.58	10.26	1.76	1.00	2.67	2.07	0.20	0.46	4.26	2.70	6.59	30.31	39.23	40.83	26.61	29.87	6.15	7.82	4.93	6.30	17.53	0.31	1.28	6.24	8.75	8.42	5.54	19.90	9.45	3.52
Export	2.33	28.62	64.11	63.45	36.10	20.49	34.83	0.00	23.80	45.30	36.46	20.00	21.75	0.08	0.00	3.80	0.59	1.22	1.61	20.55	0.00	0.00	29.43	35.22	26.84	7.76	24.16	6.75	0.00	0.46	7.52

Level of usage of daily allocated capacity, calculated at monthly level, as ratio between sum of nominated daily capacities and sum of daily allocated capacities, has the following values:

- Import 10.89 [%]
- Export 14.19 [%]



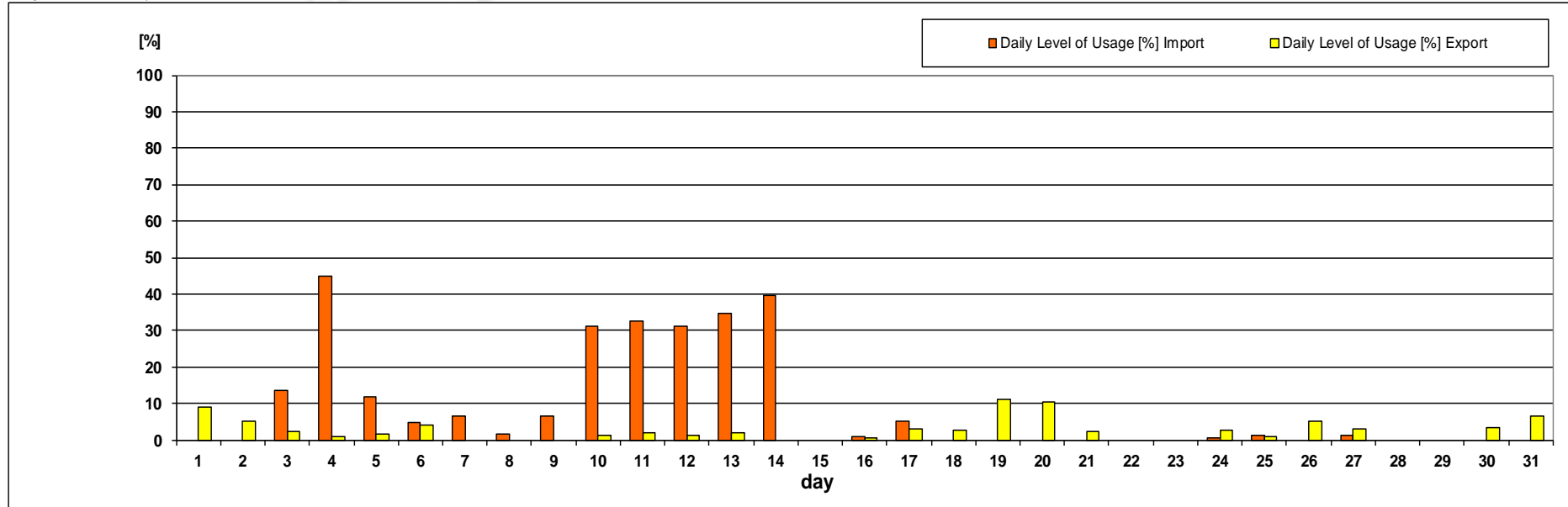
# Market for Allocation of Cross-Border Capacities



## Daily Auctions on Romanian – Bulgarian border Usage Level of Daily Allocated Capacity

Bulgaria

July 2012



Daily Level of Usage [%]

July 2012	1	2	3	4	5	6	7	8	9	10	11	12	13	14	15	16	17	18	19	20	21	22	23	24	25	26	27	28	29	30	31
Import	0.00	0.00	13.54	44.89	11.93	4.72	6.60	1.64	6.47	31.06	32.45	31.28	34.74	39.72	0.00	0.91	5.21	0.00	0.00	0.00	0.00	0.00	0.00	0.65	1.07	0.00	1.07	0.00	0.00	0.00	
Export	8.94	5.08	2.27	0.76	1.63	3.91	0.00	0.00	0.00	1.30	2.03	1.15	1.79	0.00	0.00	0.37	3.16	2.61	10.93	10.41	2.16	0.00	0.00	2.58	0.75	5.09	3.01	0.00	0.00	3.45	6.53

Level of usage of daily allocated capacity, calculated at monthly level, as ratio between sum of nominated daily capacities and sum of daily allocated capacities, has the following values:

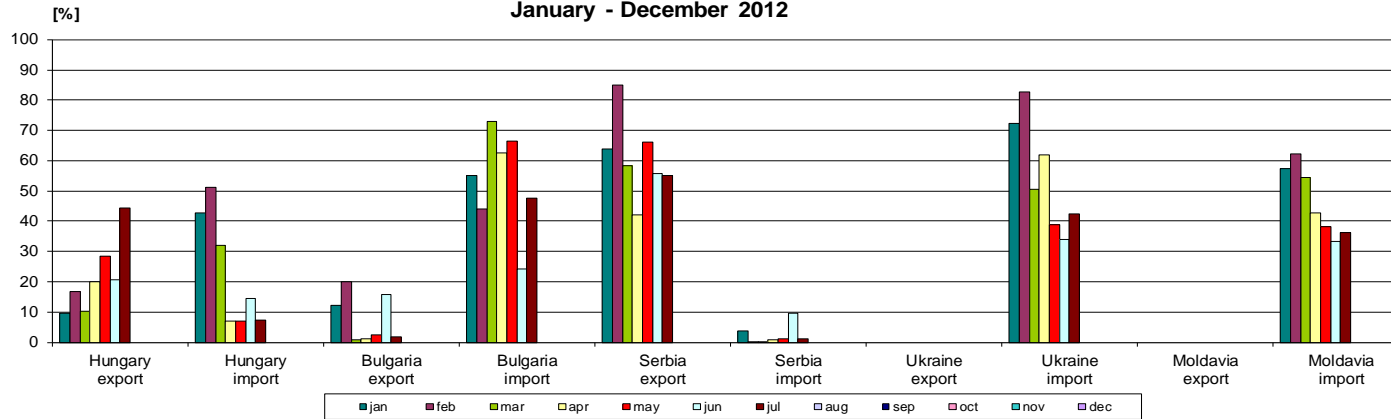
- Import 6.41 [%]
- Export 2.45 [%]



**Transelectrica®**  
Societate Administrată în Sistem Dualist

# Market for Allocation of Cross-Border Capacities

**Allocated Capacity Usage  
January - December 2012**



## Type A

### calculation:

The allocated capacity level of usage on one border and direction represents the percentage ratio between the energy associated with the commercial transactions, notified during a month, and the energy associated with the allocated capacity by the Romanian and by the neighbouring side, but only to those participants who have counterparties on the other side of the border.

[%]	Hungary export	Hungary import	Bulgaria export	Bulgaria import	Serbia export	Serbia import	Ukraine export	Ukraine import	Moldavia export	Moldavia import
jan	9.60	42.62	12.29	55.10	63.80	3.88	0.00	72.31	-	57.34
feb	16.79	51.17	20.11	44.07	85.01	0.28	0.00	82.85	-	62.18
mar	10.25	32.01	0.91	73.02	58.34	0.17	0.00	50.67	-	54.54
apr	20.05	7.00	1.00	62.71	42.05	0.82	0.00	62.06	-	42.82
may	28.28	7.14	2.51	66.36	66.22	1.23	0.00	38.94	-	38.19
jun	20.67	14.49	15.90	24.17	55.69	9.65	0.00	33.93	-	33.32
jul	44.28	7.32	1.88	47.46	55.01	1.05	0.00	42.27	-	36.13
aug										
sep										
oct										
nov										
dec										
average	21.42	23.11	7.80	53.27	60.87	2.44	0.00	54.72	-	46.36

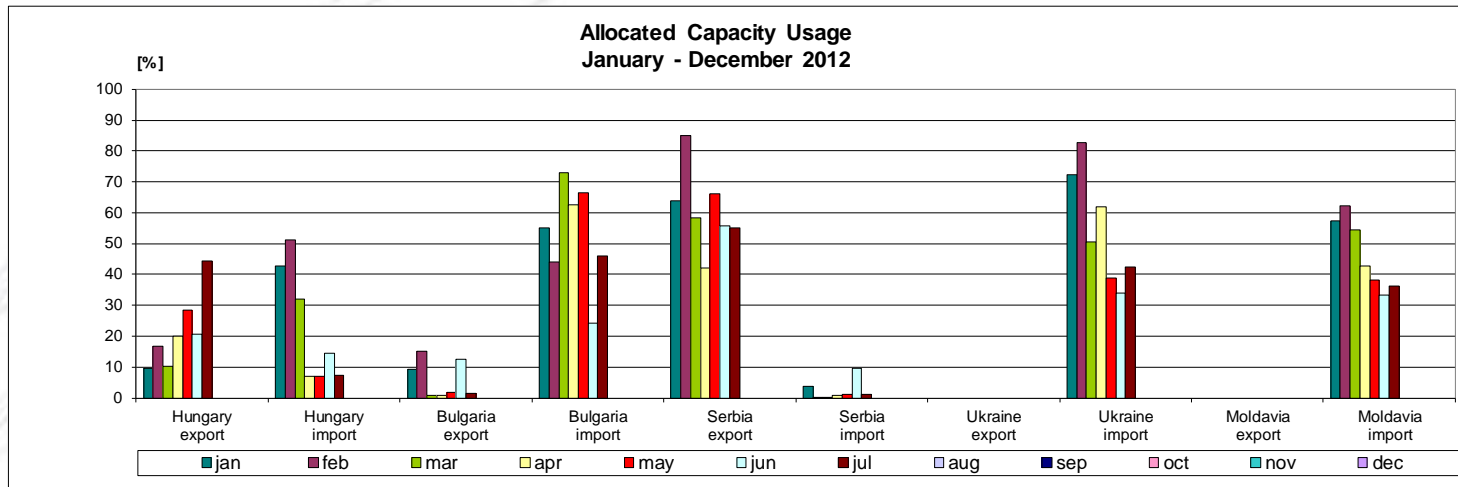
Type A

Applying type A of calculation, in July, the highest level of usage is obtained on the import direction from Bulgaria and Ukraine and export direction to Serbia and Hungary (40-60%). Compared with previous month, it can be noticed that the level of usage is similar on export direction to Serbia and has increased on import direction from Ukraine.

# Market for Allocation of Cross-Border Capacities



**Transelectrica®**  
Societate Administrată în Sistem Dualist



[%]	Hungary export	Hungary import	Bulgaria export	Bulgaria import	Serbia export	Serbia import	Ukraine export	Ukraine import	Moldavia export	Moldavia import
jan	9.60	42.62	9.12	55.10	63.80	3.88	0.00	72.31	-	57.34
feb	16.79	51.17	15.17	44.07	85.01	0.28	0.00	82.85	-	62.18
mar	10.25	32.01	0.68	73.02	58.34	0.17	0.00	50.67	-	54.54
apr	20.05	7.00	0.77	62.71	42.05	0.82	0.00	62.06	-	42.82
may	28.28	7.14	1.88	66.36	66.22	1.23	0.00	38.94	-	38.19
jun	20.67	14.49	12.44	24.17	55.69	9.48	0.00	33.93	-	33.32
jul	44.28	7.32	1.47	45.99	55.01	1.05	0.00	42.27	-	36.13
aug										
sep										
oct										
nov										
dec										
<b>average</b>	<b>21.42</b>	<b>23.11</b>	<b>5.93</b>	<b>53.06</b>	<b>60.87</b>	<b>2.41</b>	<b>0.00</b>	<b>54.72</b>	<b>-</b>	<b>46.36</b>

Type B

## Type B

### calculation:

The allocated capacity level of usage on one border and direction represents the percentage ratio between the energy associated with the commercial transactions, notified during a month, and the energy associated with the allocated capacity by the Romanian and by the neighbouring side, to all participants, no matter if they have counterparties on the other side of the border or not.

Applying type B of calculation, the level of usage has lower values on the border with Bulgaria, this being the only difference from type A of calculation. Calculations were made using the results submitted by the neighboring TSOs.

# Market for Allocation of Cross-Border Capacities



## Synthesis (C1, C3, HHI) on type of auction and total values

July 2012

Border	Auction												Total		
	Yearly			Monthly			Daily			Intraday					
	C1 [%]	C3 [%]	HHI	C1 [%]	C3 [%]	HHI	C1 [%]	C3 [%]	HHI	C1 [%]	C3 [%]	HHI	C1 [%]	C3 [%]	HHI
<b>Hungary import</b>	34.48	86.21	2866	17.39	43.96	1038	44.10	81.51	2728	-	-	-	27.03	48.00	1171
<b>Hungary export</b>	25.64	66.67	1742	27.95	64.00	1801	35.35	77.88	2562	-	-	-	15.33	43.96	968
<b>Bulgaria import</b>	35.33	75.33	2279	20.00	46.67	1208	36.26	81.49	2607	-	-	-	17.30	42.09	959
<b>Bulgaria export</b>	57.89	89.47	4114	50.00	100.00	5000	43.49	83.91	3045	-	-	-	26.00	66.78	1703
<b>Serbia import</b>	44.44	77.78	2840	20.42	53.35	1417	-	-	-	-	-	-	15.63	44.37	1171
<b>Serbia export</b>	49.33	93.33	3454	23.85	59.15	1533	-	-	-	-	-	-	18.43	48.50	1147
<b>Ukraine import</b>	46.00	96.00	3432	43.48	85.22	3049	-	-	-	-	-	-	44.49	80.60	2893
<b>Ukraine export</b>	40.00	90.00	3000	-	-	-	-	-	-	-	-	-	40.00	90.00	3000
<b>Moldavia import</b>	71.43	100.00	5918	-	-	-	-	-	-	-	-	-	71.43	100.00	5918

- Total market share was calculated as ratio between total allocated capacity per each participant (at yearly, monthly, daily and intra-day auctions) and total allocated capacity per border and direction (at yearly, monthly, daily and intra-day auctions).
- Serbian border contains only results from auctions organized by Romanian TSO.



**Transelectrica®**  
Societate Administrată în Sistem Dualist

## Transelectrica - Market Monitoring Department

### **Contact persons:**

*Octavia Unguroiu - Phone: 021 3035636;*

*Mihaela Petrescu - Phone: 021 3035633;*

*Ioana Craciun - Phone: 021 3035668;*

## Transelectrica - Operational Planning and Analysis Department

### **Contact person:**

*Emanuel Ionita - Phone: 021 3035655*

**Email: [monitorizare@transelectrica.ro](mailto:monitorizare@transelectrica.ro)**

**Fax: 021 3035630**