



Transelectrica®  
Societate Administrată în Sistem Dualist

# MARKET MONITORING REPORT

## Market for Allocation of Cross-Border Capacities

October 2012



ANRE - Romanian Energy Regulatory Authority  
HHI - Herfindahl-Hirschman Index  
BRP - Balance Responsible Party  
BM - Balancing Market  
DAM - Day Ahead Market  
TSO - Transmission System Operator  
DU – Dispatchable Unit  
PN – Physical Notification  
NDC - National Dispatching Center  
C1 – The market share of the largest market participant  
C3 – Total market share of top 3 market participants  
NPS – Minimum number of residual generators  
TTC – Total Transfer Capacity  
NTC – Net Transfer Capacity  
ATC – Available Transfer Capacity



**Transelectrica®**  
Societate Administrată în Sistem Dualist

According to the Commercial Code, Transelectrica, the Romanian Transmission System Operator, operates and monitors the activity of 3 types of markets: Balancing Market, Ancillary Services Market and Market for Allocation of Cross-Border Capacities.

Using the records from the markets data bases, Transelectrica prepares daily, weekly and monthly monitoring reports. A part of the data included in these reports (those data which are not confidential) is published on the websites **[www.transelectrica.ro](http://www.transelectrica.ro)**



**Transelectrica®**

**Societate Administrată în Sistem Dualist**

- According to the agreements between Transelectrica and neighbors for year 2012 :
  - ✓ on the Bulgarian border, the bilateral coordinated allocation is done for 100% of total capacity:
    - by ESO EAD for long term auctions;
    - by Transelectrica for daily and intra-day auctions. At daily and intra-day auctions it is applied the “netting” principle.
  - ✓ on the Hungarian border, the bilateral coordinated allocation, is done for 100% of total capacity:
    - by Transelectrica daily auctions and intra-day auctions;
    - by MAVIR long term auctions. At daily and intra-day auctions it is applied the “netting” principle.
  - ✓ on the Serbian border, long term auctions for 50% of total net transfer capacity are held by Transelectrica, the remaining of 50% being allocated by the neighboring TSO.
- Auctions are held on Damas platform, with euro currency trading.
- Long term auction results on the Bulgarian and Hungarian border (auction prices, allocated capacities) are provided by the neighbors TSO. The requested capacity on Bulgarian border is not detained by the Romanian TSO.
- The intra-day allocation is done in two auction sessions for time intervals: 00:00-12:00 and 12:00-24:00.
- Usage of allocated capacity on Ukrainian and Moldavian border is restricted by Ukrainian TSO agreement and respectively by the approval of the distribution operator of the passive consumption islands.
- Between 08 – 21.10, the 400 kV OHL Rosiori – Mukacevo was out of operation for planned maintenance program, so transfer capacity was not available on the Ukrainian border.

# Market for Allocation of Cross-Border Capacities



**Transelectrica®**

Societate Administrată în Sistem Dualist

## Monthly auction. Results of 01 - 31 October 2012

	<u>Prices [euro/MW/h]</u>	<u>Capacities [MW]</u>						
	<i>Resultes</i>	<i>TTC*</i>	<i>NTC*</i>	<i>ATC</i>	<i>AAC</i>	<i>Requested</i>	<i>Allocated</i>	<i>Final Rights**</i>
<b>Hungary export</b>								
<i>01 - 05 october 2012</i>	0.08	550	450	255	195	595	254	449
<i>06 - 07 october 2012</i>	0.08	600	500	305	195	595	305	500
<i>08 - 14 october 2012</i>	0.08	650	550	355	195	595	345	540
<i>15 - 21 october 2012</i>	0.08	600	500	305	195	595	305	500
<i>22 - 26 october 2012</i>	0.08	550	450	255	195	595	254	449
<i>27 - 28 october 2012</i>	0.08	600	500	305	195	595	305	500
<i>29 - 31 october 2012</i>	0.08	550	450	255	195	595	254	449
<b>Hungary import</b>								
<i>01 - 05 october 2012</i>	0.16	500	400	255	145	650	255	400
<i>06 - 07 october 2012</i>	0.16	600	500	355	145	650	345	490
<i>08 - 12 october 2012</i>	0.16	500	400	255	145	650	255	400
<i>13 - 14 october 2012</i>	0.16	550	450	305	145	650	305	450
<i>15 - 18 october 2012</i>	0.16	350	250	105	145	650	105	250
<i>19 - 21 october 2012</i>	0.16	550	450	305	145	650	305	450
<i>22 - 23 october 2012</i>	0.16	600	500	355	145	650	345	490
<i>24 - 26 october 2012</i>	0.16	550	450	305	145	650	305	450
<i>27 - 31 october 2012</i>	0.16	600	500	355	145	650	345	490
<b>Bulgaria export</b>								
<i>01 - 31 october 2012</i>	0.40	350	250	60	190	-	60	250
<b>Bulgaria import</b>								
<i>01 - 26 october 2012</i>	0.47	400	300	200	100	-	200	300
<i>27 - 31 october 2012</i>	0.55	300	200	100	100	-	100	200

\* total values

\*\* final rights = monthly allocated capacities + annual allocated capacities (border and direction total values) after withdrawals.

**Public**



**Transelectrica®**  
Societate Administrată în Sistem Dualist

# Market for Allocation of Cross-Border Capacities

## Monthly auction. Results of 01 - 31 October 2012

	<u>Prices [euro/MW/h]</u>	<u>Capacities [MW]</u>						
	<i>Resultes</i>	<i>TTC*</i>	<i>NTC*</i>	<i>ATC</i>	<i>AAC</i>	<i>Requested</i>	<i>Allocated</i>	<i>Final Rights**</i>
<b>Serbia export</b>								
<i>01 - 05 october 2012</i>	0.70	500	400	125	75	305	125	400
<i>06 - 07 october 2012</i>	0.57	550	450	150	75	312	150	450
<i>08 - 14 october 2012</i>	0.53	600	500	175	75	320	175	499
<i>15 - 26 october 2012</i>	0.70	500	400	125	75	310	125	399
<i>27 - 28 october 2012</i>	0.37	600	500	175	75	302	175	500
<i>29 - 31 october 2012</i>	0.70	500	400	125	75	300	125	400
<b>Serbia import</b>								
<i>01 - 14 october 2012</i>	0.06	400	300	105	45	155	105	299
<i>15 - 18 october 2012</i>	0.09	350	250	80	45	145	80	250
<i>19 - 21 october 2012</i>	0.06	400	300	105	45	155	105	300
<i>22 - 26 october 2012</i>	0.03	450	350	130	45	155	130	349
<i>27 - 31 october 2012</i>	0.00	500	400	155	45	155	155	400
<b>Ukraine export</b>								
<i>01 - 07 october 2012</i>	-	150	50	0	50	-	-	50
<i>08 - 21 october 2012</i>	-	0	0	-	-	-	-	-
<i>22 - 31 october 2012</i>	-	150	50	0	50	-	-	50
<b>Ukraine import</b>								
<i>01 - 07 october 2012</i>	0.11	200	100	50	50	113	50	100
<i>08 - 21 october 2012</i>	-	0	0	-	-	-	-	-
<i>22 - 31 october 2012</i>	0.15	200	100	50	50	138	50	100
<b>Moldavia export</b>								
<i>01 - 31 october 2012</i>	-	-	-	-	-	-	-	-
<b>Moldavia import</b>								
<i>01 - 31 october 2012</i>	-	175	175	0	175	-	-	175

\* total values

\*\*\* final rights = monthly allocated capacities + annual allocated capacities (border and direction total values) after withdrawals.

• between 08 – 21.10, the 400 kV Rosiori – Mukacevo was out of operation for planned maintenance program.

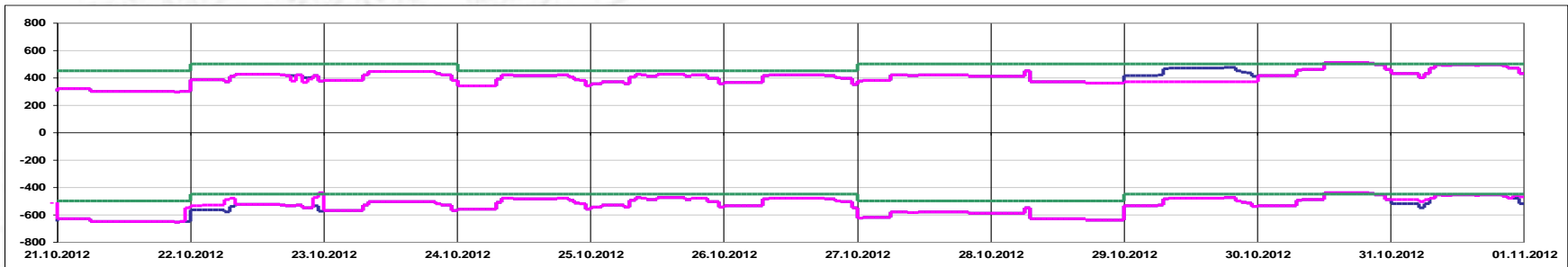
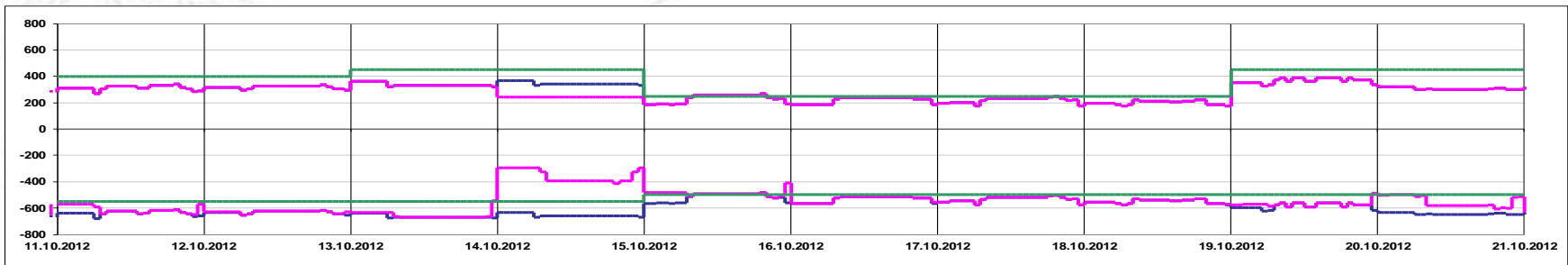
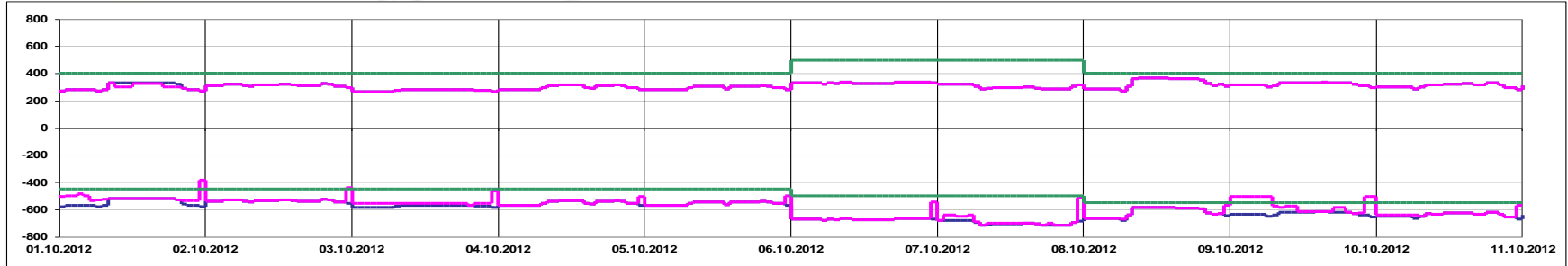
Note: Values of ATC, AAC, Requested and Allocated capacities on Serbian border are related to auctions organized by Romanian TSO.



**Transelectrica®**  
Societate Administrată în Sistem Dualist

## Daily Auctions on Romanian – Hungarian border

Hungary oct.2012



Offered Capacity on Daily Auction Import (+) / Export (-) [MW]

Allocated Capacity on Daily Auction Import (+) / Export (-) [MW]

Net Transfer Capacity (NTC) Import (+) / Export (-) [MW]

Public





**Transelectrica®**  
Societate Administrată în Sistem Dualist

# Market for Allocation of Cross-Border Capacities

## Daily Auctions on Romanian – Hungarian border

### Auction Price [Euro/MW/h] - Export

day	1	2	3	4	5	6	7	8	9	10	11	12	13	14	15	16	17	18	19	20	21	22	23	24	25	Max
1	0.00	0.00	0.00	0.00	0.00	0.00	0.00	0.00	0.03	0.03	0.03	0.03	0.03	0.03	0.03	0.03	0.03	0.03	0.03	0.03	0.00	0.00	0.00	0.00		0.03
2	0.01	0.01	0.01	0.01	0.01	0.01	0.01	0.01	0.01	0.01	0.01	0.01	0.01	0.01	0.01	0.01	0.01	0.01	0.01	0.01	0.05	0.03	0.01	0.01	0.00	0.05
3	0.00	0.00	0.00	0.00	0.00	0.00	0.00	0.00	0.00	0.00	0.00	0.00	0.00	0.00	0.00	0.00	0.00	0.00	0.00	0.01	0.00	0.00	0.00	0.00		0.01
4	0.01	0.01	0.01	0.01	0.01	0.01	0.01	0.01	0.01	0.01	0.01	0.01	0.01	0.01	0.01	0.01	0.01	0.01	0.01	0.01	0.03	0.01	0.01	0.01	0.00	0.03
5	0.01	0.01	0.01	0.01	0.01	0.01	0.01	0.01	0.01	0.01	0.01	0.01	0.01	0.01	0.02	0.02	0.02	0.01	0.01	0.01	0.03	0.05	0.01	0.01	0.00	0.05
6	0.01	0.01	0.01	0.01	0.01	0.01	0.01	0.03	0.03	0.03	0.03	0.03	0.03	0.03	0.05	0.05	0.05	0.03	0.03	0.05	0.05	0.05	0.01	0.00		0.05
7	0.01	0.00	0.00	0.00	0.00	0.00	0.00	0.01	0.00	0.00	0.00	0.00	0.00	0.00	0.02	0.02	0.01	0.01	0.00	0.01	0.01	0.01	0.03	0.00		0.03
8	0.01	0.01	0.01	0.01	0.01	0.01	0.00	0.03	0.05	0.05	0.03	0.03	0.03	0.03	0.05	0.05	0.05	0.03	0.03	0.05	0.05	0.05	0.02	0.00		0.05
9	0.00	0.00	0.00	0.00	0.00	0.00	0.00	0.00	0.00	0.00	0.00	0.00	0.00	0.00	0.00	0.00	0.00	0.00	0.00	0.01	0.01	0.00	0.00	0.00		0.01
10	0.00	0.00	0.00	0.00	0.00	0.00	0.00	0.01	0.01	0.01	0.01	0.01	0.01	0.01	0.01	0.01	0.01	0.01	0.01	0.01	0.01	0.01	0.01	0.00		0.01
11	0.00	0.00	0.00	0.00	0.00	0.00	0.00	0.01	0.01	0.01	0.01	0.01	0.01	0.01	0.01	0.01	0.01	0.01	0.01	0.01	0.01	0.01	0.01	0.00		0.01
12	0.00	0.00	0.00	0.00	0.00	0.00	0.01	0.01	0.01	0.01	0.01	0.01	0.01	0.01	0.01	0.01	0.01	0.01	0.01	0.01	0.03	0.01	0.01	0.01	0.00	0.03
13	0.00	0.00	0.00	0.00	0.00	0.00	0.00	0.00	0.01	0.01	0.01	0.01	0.01	0.01	0.01	0.01	0.01	0.01	0.01	0.01	0.01	0.01	0.01	0.00	0.00	0.01
14	0.00	0.00	0.00	0.00	0.00	0.00	0.00	0.00	0.00	0.00	0.00	0.00	0.00	0.00	0.00	0.00	0.00	0.00	0.00	0.00	0.00	0.00	0.00	0.00	0.00	0.00
15	0.00	0.00	0.00	0.00	0.00	0.00	0.00	0.00	0.05	0.05	0.05	0.05	0.05	0.05	0.05	0.05	0.05	0.05	0.10	0.11	0.05	0.05	0.00	0.00		0.11
16	0.01	0.01	0.01	0.01	0.01	0.01	0.01	0.01	0.05	0.05	0.05	0.05	0.05	0.05	0.05	0.05	0.05	0.05	0.10	0.11	0.09	0.02	0.01	0.00		0.11
17	0.01	0.01	0.01	0.01	0.01	0.01	0.01	0.03	0.05	0.05	0.05	0.05	0.05	0.05	0.05	0.05	0.11	0.11	0.11	0.13	0.11	0.05	0.05	0.01		0.13
18	0.01	0.01	0.01	0.01	0.01	0.01	0.01	0.03	0.05	0.05	0.05	0.05	0.05	0.05	0.05	0.05	0.05	0.05	0.05	0.10	0.05	0.05	0.03	0.00		0.10
19	0.00	0.00	0.00	0.00	0.00	0.00	0.00	0.01	0.01	0.01	0.01	0.01	0.01	0.01	0.01	0.01	0.01	0.01	0.01	0.03	0.01	0.01	0.00	0.00		0.03
20	0.00	0.00	0.00	0.00	0.00	0.00	0.00	0.00	0.00	0.00	0.00	0.00	0.00	0.00	0.00	0.00	0.00	0.00	0.00	0.00	0.00	0.00	0.00	0.00	0.00	0.00
21	0.01	0.01	0.01	0.01	0.01	0.01	0.00	0.01	0.01	0.01	0.01	0.01	0.01	0.01	0.01	0.01	0.01	0.01	0.01	0.03	0.01	0.01	0.01	0.00		0.03
22	0.00	0.00	0.00	0.00	0.00	0.00	0.00	0.00	0.01	0.01	0.01	0.03	0.03	0.01	0.01	0.01	0.01	0.01	0.03	0.03	0.01	0.01	0.00	0.00		0.03
23	0.01	0.01	0.01	0.01	0.01	0.01	0.01	0.01	0.10	0.10	0.10	0.10	0.10	0.10	0.10	0.10	0.10	0.10	0.11	0.11	0.11	0.05	0.03	0.01		0.11
24	0.10	0.10	0.10	0.10	0.10	0.10	0.10	0.11	0.15	0.15	0.15	0.15	0.15	0.15	0.15	0.15	0.15	0.15	0.15	0.25	0.15	0.15	0.13	0.01		0.25
25	0.10	0.10	0.10	0.10	0.10	0.05	0.10	0.11	0.21	0.21	0.13	0.13	0.21	0.21	0.21	0.21	0.21	0.13	0.55	0.55	0.55	0.21	0.11	0.01		0.55
26	0.04	0.05	0.05	0.05	0.05	0.05	0.04	0.05	0.18	0.21	0.21	0.21	0.18	0.18	0.18	0.18	0.18	0.18	0.18	0.18	0.18	0.18	0.05	0.01		0.21
27	0.03	0.03	0.03	0.03	0.03	0.03	0.03	0.04	0.04	0.05	0.05	0.05	0.05	0.05	0.05	0.05	0.05	0.05	0.05	0.05	0.05	0.05	0.04	0.01		0.05
28	0.03	0.03	0.03	0.03	0.03	0.03	0.03	0.05	0.03	0.05	0.15	0.15	0.15	0.15	0.05	0.05	0.05	0.05	0.05	0.05	0.15	0.05	0.05	0.03	0.03	0.03
29	0.31	0.31	0.31	0.31	0.31	0.31	0.50	0.57	0.57	0.61	0.61	0.61	0.61	0.61	0.61	0.61	0.61	0.61	0.61	0.61	0.57	0.57	0.50	0.30		0.61
30	0.13	0.13	0.13	0.13	0.13	0.13	0.13	0.13	0.26	0.26	0.26	0.26	0.26	0.26	0.26	0.26	0.26	0.26	0.31	0.31	0.26	0.26	0.18	0.13		0.31
31	0.00	0.00	0.00	0.00	0.00	0.00	0.00	0.01	0.01	0.01	0.01	0.01	0.01	0.01	0.01	0.01	0.01	0.01	0.03	0.01	0.01	0.01	0.00	0.00		0.03

Hungary export oct.2012





**Transelectrica®**  
Societate Administrată în Sistem Dualist

# Market for Allocation of Cross-Border Capacities

## Daily Auctions on Romanian – Hungarian border

### Auction Price [Euro/MW/h] - Import

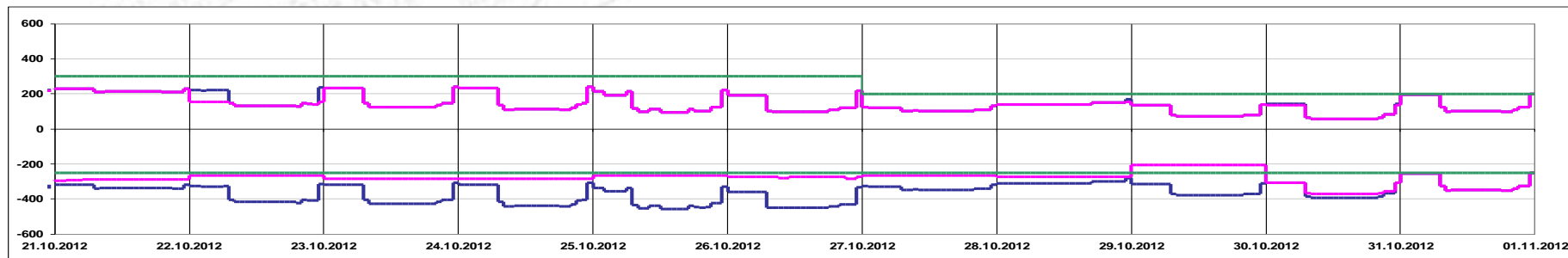
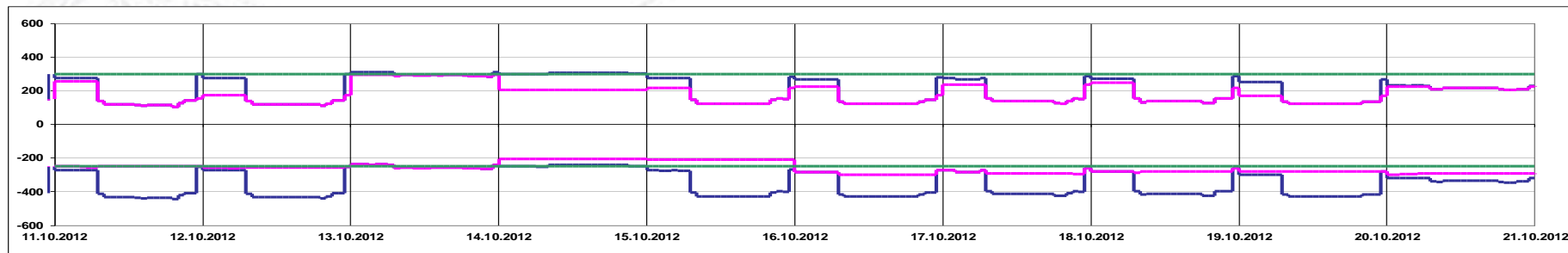
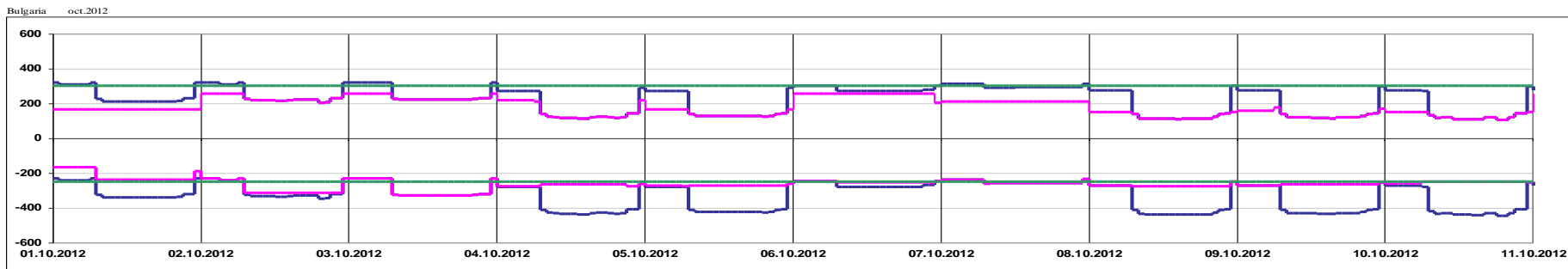
day	1	2	3	4	5	6	7	8	9	10	11	12	13	14	15	16	17	18	19	20	21	22	23	24	25	Max	
1	0.06	0.05	0.05	0.05	0.05	0.05	0.05	0.05	0.03	0.00	0.00	0.00	0.00	0.00	0.00	0.00	0.00	0.00	0.00	0.00	0.03	0.03	0.03	0.03		0.06	
2	0.13	0.13	0.13	0.11	0.11	0.13	0.15	0.15	0.15	0.15	0.15	0.15	0.15	0.15	0.24	0.24	0.13	0.15	0.15	0.13	0.13	0.13	0.13	0.11		0.24	
3	0.05	0.05	0.05	0.05	0.05	0.33	0.33	0.33	0.56	0.56	0.56	0.56	0.56	0.56	0.56	0.33	0.33	0.33	0.33	0.05	0.11	0.33	0.33	0.05		0.56	
4	0.05	0.05	0.05	0.05	0.05	0.55	0.05	0.05	0.03	0.05	0.05	0.05	0.05	0.05	0.13	0.13	0.05	0.05	0.05	0.03	0.03	0.13	0.13	0.03		0.55	
5	0.05	0.05	0.05	0.24	0.26	0.27	0.27	0.26	0.26	0.26	0.26	0.26	0.52	0.52	0.13	0.08	0.08	0.08	0.08	0.03	0.03	0.13	0.13	0.03		0.52	
6	0.12	0.12	0.12	0.12	0.12	0.12	0.26	0.12	0.10	0.09	0.10	0.10	0.12	0.12	0.12	0.12	0.10	0.09	0.09	0.09	0.09	0.09	0.09	0.09		0.26	
7	0.05	0.05	0.05	0.05	0.05	0.05	0.05	0.05	0.05	0.05	0.05	0.05	0.05	0.05	0.05	0.05	0.05	0.05	0.05	0.05	0.05	0.05	0.05	0.05		0.05	
8	0.05	0.05	0.05	0.05	0.05	0.05	0.05	0.03	0.01	0.01	0.01	0.01	0.01	0.01	0.01	0.01	0.01	0.01	0.01	0.01	0.01	0.03	0.03	0.03		0.05	
9	0.05	0.05	0.05	0.05	0.05	0.26	0.05	0.05	0.05	0.05	0.05	0.05	0.05	0.05	0.05	0.03	0.03	0.03	0.03	0.03	0.03	0.05	0.05	0.05		0.26	
10	0.05	0.05	0.05	0.05	0.05	0.05	0.05	0.05	0.05	0.05	0.05	0.05	0.05	0.05	0.05	0.05	0.05	0.05	0.05	0.05	0.05	0.05	0.05	0.05		0.05	
11	0.05	0.05	0.05	0.05	0.05	0.10	0.26	0.05	0.05	0.05	0.05	0.05	0.05	0.10	0.10	0.03	0.03	0.03	0.03	0.03	0.03	0.03	0.05	0.03		0.26	
12	0.03	0.03	0.03	0.03	0.03	0.03	0.03	0.03	0.01	0.01	0.01	0.01	0.01	0.01	0.01	0.01	0.01	0.01	0.01	0.01	0.01	0.03	0.01	0.01		0.03	
13	0.02	0.02	0.02	0.02	0.03	0.03	0.05	0.05	0.05	0.05	0.05	0.05	0.05	0.05	0.05	0.05	0.05	0.05	0.05	0.05	0.03	0.03	0.05	0.03		0.05	
14	0.00	0.00	0.00	0.00	0.00	0.00	0.00	0.00	0.00	0.00	0.00	0.00	0.00	0.00	0.00	0.00	0.00	0.00	0.00	0.00	0.00	0.00	0.00	0.00		0.00	
15	0.17	0.17	0.17	0.17	0.17	0.17	0.17	0.05	0.05	0.05	0.05	0.05	0.05	0.05	0.05	0.05	0.05	0.05	0.05	0.05	0.05	0.10	0.05	0.10		0.17	
16	0.31	0.31	0.31	0.31	0.31	0.31	1.05	0.40	0.56	1.05	1.01	1.01	1.01	1.01	0.56	0.56	0.56	1.05	1.05	0.56	0.40	0.31	0.37	0.25	0.13		1.05
17	0.13	0.13	0.05	0.05	0.26	0.26	0.13	0.05	0.05	0.05	0.05	0.05	0.05	0.05	0.05	0.13	0.13	0.13	0.10	0.10	0.13	0.05	0.05	0.05		0.26	
18	0.26	0.26	0.26	0.26	0.26	0.26	0.41	0.41	0.41	0.56	0.56	0.56	0.56	0.56	0.56	0.56	0.56	0.56	0.41	0.41	0.50	0.41	0.41	0.41		0.56	
19	0.05	0.05	0.05	0.05	0.05	0.26	0.05	0.03	0.01	0.05	0.05	0.06	0.27	0.27	0.06	0.06	0.05	0.05	0.10	0.05	0.05	0.05	0.05	0.03		0.27	
20	0.03	0.03	0.03	0.03	0.03	0.03	0.03	0.03	0.03	0.03	0.03	0.03	0.03	0.03	0.03	0.03	0.03	0.03	0.03	0.03	0.03	0.03	0.03	0.03		0.03	
21	0.05	0.05	0.05	0.05	0.05	0.20	0.05	0.01	0.01	0.01	0.01	0.01	0.01	0.01	0.01	0.01	0.01	0.01	0.01	0.01	0.01	0.01	0.01	0.01		0.20	
22	0.03	0.03	0.03	0.03	0.03	0.03	0.03	0.01	0.01	0.01	0.01	0.01	0.01	0.01	0.01	0.01	0.01	0.01	0.01	0.00	0.01	0.00	0.00	0.01		0.03	
23	0.10	0.10	0.13	0.13	0.13	0.26	0.10	0.05	0.03	0.03	0.03	0.03	0.05	0.05	0.05	0.03	0.03	0.03	0.03	0.03	0.03	0.05	0.05	0.05		0.26	
24	0.05	0.05	0.05	0.05	0.05	0.05	0.04	0.03	0.03	0.03	0.03	0.03	0.03	0.03	0.03	0.03	0.03	0.03	0.03	0.03	0.03	0.03	0.03	0.03		0.05	
25	0.05	0.05	0.05	0.05	0.05	0.05	0.05	0.03	0.01	0.01	0.01	0.01	0.01	0.01	0.01	0.01	0.01	0.01	0.01	0.01	0.01	0.03	0.03	0.03		0.05	
26	0.06	0.06	0.06	0.06	0.06	0.10	0.10	0.06	0.06	0.06	0.06	0.06	0.06	0.06	0.06	0.06	0.06	0.05	0.05	0.05	0.06	0.06	0.06	0.05		0.10	
27	0.04	0.04	0.04	0.04	0.04	0.05	0.03	0.03	0.03	0.03	0.03	0.03	0.03	0.03	0.03	0.03	0.03	0.03	0.03	0.03	0.04	0.04	0.04	0.03		0.05	
28	0.03	0.03	0.03	0.03	0.03	0.03	0.03	0.02	0.05	0.05	0.05	0.05	0.05	0.05	0.05	0.05	0.05	0.05	0.05	0.05	0.05	0.05	0.05	0.05		0.05	
29	0.00	0.00	0.00	0.00	0.00	0.00	0.00	0.00	0.00	0.00	0.00	0.00	0.00	0.00	0.00	0.00	0.00	0.00	0.00	0.00	0.00	0.00	0.00	0.00		0.00	
30	0.13	0.13	0.13	0.13	0.13	0.13	0.13	0.13	0.13	0.13	0.13	0.13	0.10	0.10	0.10	0.10	0.10	0.10	0.10	0.10	0.10	0.13	0.13	0.13		0.13	
31	0.03	0.03	0.03	0.03	0.03	0.05	0.03	0.03	0.05	0.05	0.05	0.05	0.05	0.05	0.05	0.03	0.03	0.03	0.03	0.03	0.03	0.03	0.03	0.03		0.05	

Hungary import oct.2012



Transelectrica®  
Societate Administrată în Sistem Dualist

## Daily Auctions on Romanian – Bulgarian border



Offered Capacity on Daily Auction Import (+) / Export (-) [MW]

Allocated Capacity on Daily Auction Import (+) / Export (-) [MW]

Net Transfer Capacity (NTC) Import (+) / Export (-) [MW]



**Transelectrica®**  
Societate Administrată în Sistem Dualist

# Market for Allocation of Cross-Border Capacities

## Daily Auctions on Romanian – Bulgarian border

### Auction Price [Euro/MW/h] – Export

day	1	2	3	4	5	6	7	8	9	10	11	12	13	14	15	16	17	18	19	20	21	22	23	24	25	Max
1	0.00	0.00	0.00	0.00	0.00	0.00	0.00	0.00	0.00	0.00	0.00	0.00	0.00	0.00	0.00	0.00	0.00	0.00	0.00	0.00	0.00	0.00	0.00	0.00	0.00	0.00
2	0.02	0.02	0.02	0.02	0.02	0.02	0.02	0.00	0.00	0.00	0.00	0.00	0.00	0.00	0.00	0.00	0.00	0.00	0.00	0.00	0.00	0.00	0.00	0.00	0.03	0.03
3	0.03	0.03	0.03	0.03	0.03	0.03	0.03	0.01	0.01	0.01	0.01	0.01	0.01	0.01	0.01	0.01	0.01	0.01	0.01	0.01	0.01	0.01	0.01	0.01	0.03	0.03
4	0.00	0.00	0.00	0.00	0.00	0.00	0.00	0.00	0.00	0.00	0.00	0.00	0.00	0.00	0.00	0.00	0.00	0.00	0.00	0.00	0.00	0.00	0.00	0.00	0.01	0.01
5	0.00	0.00	0.00	0.00	0.00	0.00	0.00	0.00	0.00	0.00	0.00	0.00	0.00	0.00	0.00	0.00	0.00	0.00	0.00	0.00	0.00	0.00	0.00	0.00	0.01	0.01
6	0.02	0.02	0.02	0.02	0.02	0.02	0.01	0.00	0.00	0.00	0.00	0.00	0.00	0.00	0.00	0.00	0.00	0.00	0.00	0.00	0.00	0.00	0.00	0.00	0.01	0.02
7	0.02	0.02	0.02	0.02	0.02	0.02	0.02	0.01	0.01	0.01	0.01	0.01	0.01	0.01	0.01	0.01	0.01	0.01	0.01	0.01	0.01	0.01	0.01	0.01	0.02	0.02
8	0.01	0.01	0.01	0.01	0.01	0.01	0.01	0.00	0.00	0.00	0.00	0.00	0.00	0.00	0.00	0.00	0.00	0.00	0.00	0.00	0.00	0.00	0.00	0.00	0.01	0.01
9	0.01	0.01	0.01	0.01	0.01	0.01	0.01	0.00	0.00	0.00	0.00	0.00	0.00	0.00	0.00	0.00	0.00	0.00	0.00	0.00	0.00	0.00	0.00	0.00	0.01	0.01
10	0.00	0.00	0.00	0.00	0.00	0.00	0.00	0.00	0.00	0.00	0.00	0.00	0.00	0.00	0.00	0.00	0.00	0.00	0.00	0.00	0.00	0.00	0.00	0.00	0.01	0.01
11	0.00	0.00	0.00	0.00	0.00	0.00	0.00	0.00	0.00	0.00	0.00	0.00	0.00	0.00	0.00	0.00	0.00	0.00	0.00	0.00	0.00	0.00	0.00	0.00	0.00	0.00
12	0.00	0.00	0.00	0.00	0.00	0.00	0.00	0.00	0.00	0.00	0.00	0.00	0.00	0.00	0.00	0.00	0.00	0.00	0.00	0.00	0.00	0.00	0.00	0.00	0.01	0.01
13	0.02	0.02	0.02	0.02	0.02	0.02	0.02	0.01	0.01	0.01	0.01	0.01	0.01	0.01	0.01	0.01	0.01	0.01	0.01	0.01	0.01	0.01	0.01	0.00	0.02	0.02
14	0.00	0.00	0.00	0.00	0.00	0.00	0.00	0.00	0.00	0.00	0.00	0.00	0.00	0.00	0.00	0.00	0.00	0.00	0.00	0.00	0.00	0.00	0.00	0.00	0.00	0.00
15	0.00	0.00	0.00	0.00	0.00	0.00	0.00	0.00	0.00	0.00	0.00	0.00	0.00	0.00	0.00	0.00	0.00	0.00	0.00	0.00	0.00	0.00	0.00	0.00	0.00	0.00
16	0.01	0.01	0.01	0.01	0.01	0.01	0.01	0.00	0.00	0.00	0.00	0.00	0.00	0.00	0.00	0.00	0.00	0.00	0.00	0.00	0.00	0.00	0.00	0.00	0.01	0.01
17	0.01	0.01	0.01	0.01	0.01	0.01	0.01	0.00	0.00	0.00	0.00	0.00	0.00	0.00	0.00	0.00	0.00	0.00	0.00	0.00	0.00	0.00	0.00	0.00	0.01	0.01
18	0.00	0.00	0.00	0.00	0.00	0.01	0.01	0.00	0.00	0.00	0.00	0.00	0.00	0.00	0.00	0.00	0.00	0.00	0.00	0.00	0.00	0.00	0.00	0.00	0.01	0.01
19	0.00	0.00	0.00	0.00	0.00	0.00	0.00	0.00	0.00	0.00	0.00	0.00	0.00	0.00	0.00	0.00	0.00	0.00	0.00	0.00	0.00	0.00	0.00	0.00	0.00	0.00
20	0.00	0.00	0.00	0.00	0.00	0.00	0.00	0.00	0.00	0.00	0.00	0.00	0.00	0.00	0.00	0.00	0.00	0.00	0.00	0.00	0.00	0.00	0.00	0.00	0.00	0.00
21	0.00	0.00	0.00	0.00	0.00	0.00	0.00	0.00	0.00	0.00	0.00	0.00	0.00	0.00	0.00	0.00	0.00	0.00	0.00	0.00	0.00	0.00	0.00	0.00	0.00	0.00
22	0.00	0.00	0.00	0.00	0.00	0.00	0.00	0.00	0.00	0.00	0.00	0.00	0.00	0.00	0.00	0.00	0.00	0.00	0.00	0.00	0.00	0.00	0.00	0.00	0.00	0.00
23	0.00	0.00	0.00	0.00	0.00	0.00	0.00	0.00	0.00	0.00	0.00	0.00	0.00	0.00	0.00	0.00	0.00	0.00	0.00	0.00	0.00	0.00	0.00	0.00	0.00	0.00
24	0.00	0.00	0.00	0.00	0.00	0.00	0.00	0.00	0.00	0.00	0.00	0.00	0.00	0.00	0.00	0.00	0.00	0.00	0.00	0.00	0.00	0.00	0.00	0.00	0.00	0.00
25	0.00	0.00	0.00	0.00	0.00	0.00	0.00	0.00	0.00	0.00	0.00	0.00	0.00	0.00	0.00	0.00	0.00	0.00	0.00	0.00	0.00	0.00	0.00	0.00	0.00	0.00
26	0.00	0.00	0.00	0.00	0.00	0.00	0.00	0.00	0.00	0.00	0.00	0.00	0.00	0.00	0.00	0.00	0.00	0.00	0.00	0.00	0.00	0.00	0.00	0.00	0.00	0.00
27	0.00	0.00	0.00	0.00	0.00	0.00	0.00	0.00	0.00	0.00	0.00	0.00	0.00	0.00	0.00	0.00	0.00	0.00	0.00	0.00	0.00	0.00	0.00	0.00	0.00	0.00
28	0.00	0.00	0.00	0.00	0.00	0.00	0.00	0.00	0.00	0.00	0.00	0.00	0.00	0.00	0.00	0.00	0.00	0.00	0.00	0.00	0.00	0.00	0.00	0.00	0.00	0.00
29	0.00	0.00	0.00	0.00	0.00	0.00	0.00	0.00	0.00	0.00	0.00	0.00	0.00	0.00	0.00	0.00	0.00	0.00	0.00	0.00	0.00	0.00	0.00	0.00	0.00	0.00
30	0.01	0.01	0.01	0.01	0.01	0.01	0.01	0.00	0.00	0.00	0.00	0.00	0.00	0.00	0.00	0.00	0.00	0.00	0.00	0.00	0.00	0.00	0.00	0.00	0.01	0.01
31	0.01	0.01	0.01	0.01	0.01	0.01	0.01	0.01	0.01	0.01	0.01	0.01	0.01	0.01	0.01	0.01	0.01	0.01	0.01	0.01	0.01	0.01	0.01	0.01	0.01	0.01

Bulgaria export oct.2012



Transelectrica®  
Societate Administrată în Sistem Dualist

# Market for Allocation of Cross-Border Capacities

## Daily Auctions on Romanian – Bulgarian border

### Auction Price [Euro/MW/h] – Import

day	1	2	3	4	5	6	7	8	9	10	11	12	13	14	15	16	17	18	19	20	21	22	23	24	25	Max		
1	0.00	0.00	0.00	0.00	0.00	0.00	0.00	0.00	0.00	0.00	0.00	0.00	0.00	0.00	0.00	0.00	0.00	0.00	0.00	0.00	0.00	0.00	0.00	0.00	0.00	0.00		
2	0.00	0.00	0.00	0.00	0.00	0.00	0.00	0.01	0.03	0.03	0.03	0.03	0.03	0.03	0.03	0.03	0.03	0.03	0.03	0.03	0.03	0.01	0.01	0.00		0.03		
3	0.00	0.00	0.00	0.00	0.00	0.00	0.00	0.01	0.01	0.01	0.01	0.01	0.01	0.01	0.01	0.01	0.01	0.01	0.01	0.01	0.01	0.01	0.01	0.01	0.00		0.03	
4	0.00	0.00	0.00	0.00	0.00	0.00	0.00	0.01	0.03	0.03	0.03	0.03	0.03	0.03	0.03	0.03	0.03	0.03	0.03	0.03	0.03	0.03	0.01	0.03	0.00		0.03	
5	0.00	0.00	0.00	0.00	0.00	0.00	0.00	0.03	0.05	0.05	0.05	0.05	0.05	0.05	0.03	0.03	0.03	0.03	0.05	0.05	0.03	0.03	0.03	0.03	0.00		0.05	
6	0.00	0.00	0.00	0.00	0.00	0.00	0.00	0.00	0.00	0.00	0.00	0.00	0.00	0.00	0.00	0.00	0.00	0.00	0.00	0.00	0.00	0.00	0.00	0.00	0.00		0.00	
7	0.00	0.00	0.00	0.00	0.00	0.00	0.00	0.00	0.00	0.00	0.00	0.00	0.00	0.00	0.00	0.00	0.00	0.00	0.00	0.00	0.00	0.00	0.00	0.00	0.00		0.00	
8	0.00	0.00	0.00	0.00	0.00	0.00	0.00	0.01	0.03	0.04	0.04	0.04	0.03	0.03	0.04	0.04	0.04	0.04	0.04	0.04	0.04	0.03	0.01	0.01	0.00		0.04	
9	0.00	0.00	0.00	0.00	0.00	0.00	0.00	0.05	0.05	0.05	0.05	0.05	0.05	0.05	0.05	0.05	0.05	0.05	0.05	0.05	0.05	0.05	0.04	0.04	0.00		0.05	
10	0.00	0.00	0.00	0.00	0.00	0.00	0.00	0.01	0.03	0.03	0.03	0.04	0.04	0.04	0.04	0.04	0.03	0.04	0.05	0.05	0.05	0.04	0.01	0.01	0.00		0.05	
11	0.00	0.00	0.00	0.00	0.00	0.00	0.00	0.03	0.05	0.05	0.05	0.05	0.03	0.04	0.04	0.04	0.04	0.05	0.05	0.05	0.05	0.03	0.03	0.03	0.00		0.05	
12	0.00	0.00	0.00	0.00	0.00	0.00	0.00	0.01	0.03	0.03	0.03	0.03	0.03	0.03	0.03	0.03	0.03	0.03	0.03	0.03	0.03	0.04	0.03	0.01	0.01	0.00		0.04
13	0.00	0.00	0.00	0.00	0.00	0.00	0.00	0.01	0.01	0.01	0.01	0.01	0.01	0.00	0.01	0.00	0.00	0.00	0.01	0.01	0.01	0.01	0.01	0.01	0.00		0.01	
14	0.00	0.00	0.00	0.00	0.00	0.00	0.00	0.00	0.00	0.00	0.00	0.00	0.00	0.00	0.00	0.00	0.00	0.00	0.00	0.00	0.00	0.00	0.00	0.00	0.00		0.00	
15	0.00	0.00	0.00	0.00	0.00	0.00	0.00	0.01	0.03	0.03	0.03	0.03	0.03	0.03	0.03	0.03	0.03	0.03	0.03	0.03	0.03	0.01	0.01	0.01	0.00		0.03	
16	0.00	0.00	0.00	0.00	0.00	0.00	0.00	0.02	0.02	0.02	0.02	0.02	0.02	0.02	0.02	0.02	0.02	0.02	0.02	0.02	0.02	0.05	0.02	0.01	0.01	0.00		0.05
17	0.00	0.00	0.00	0.00	0.00	0.00	0.00	0.01	0.02	0.02	0.02	0.02	0.02	0.02	0.02	0.02	0.02	0.02	0.02	0.02	0.02	0.02	0.01	0.02	0.00		0.02	
18	0.00	0.00	0.00	0.00	0.00	0.00	0.00	0.02	0.03	0.02	0.02	0.02	0.02	0.02	0.02	0.02	0.02	0.02	0.03	0.03	0.02	0.02	0.02	0.00			0.03	
19	0.00	0.00	0.00	0.00	0.00	0.00	0.00	0.01	0.02	0.02	0.02	0.02	0.02	0.02	0.02	0.02	0.02	0.02	0.02	0.02	0.02	0.01	0.01	0.01	0.00		0.02	
20	0.00	0.00	0.00	0.00	0.00	0.00	0.00	0.01	0.01	0.01	0.01	0.01	0.01	0.01	0.01	0.01	0.01	0.01	0.01	0.01	0.01	0.01	0.01	0.01	0.00		0.01	
21	0.01	0.01	0.01	0.01	0.01	0.01	0.01	0.01	0.01	0.01	0.01	0.01	0.01	0.01	0.01	0.01	0.01	0.01	0.01	0.01	0.01	0.01	0.01	0.01	0.01	0.00		0.01
22	0.00	0.00	0.00	0.00	0.00	0.00	0.00	0.01	0.01	0.01	0.01	0.01	0.01	0.01	0.01	0.01	0.01	0.01	0.01	0.01	0.01	0.01	0.01	0.01	0.00		0.01	
23	0.03	0.03	0.03	0.03	0.03	0.03	0.03	0.13	0.27	0.27	0.07	0.07	0.07	0.07	0.07	0.07	0.07	0.07	0.27	0.27	0.27	0.07	0.07	0.01			0.27	
24	0.07	0.07	0.07	0.07	0.07	0.07	0.07	0.13	0.17	0.17	0.17	0.17	0.17	0.17	0.17	0.17	0.17	0.33	0.33	0.33	0.17	0.13	0.13	0.01			0.33	
25	0.03	0.03	0.03	0.03	0.03	0.03	0.05	0.55	0.55	0.55	0.55	0.55	0.55	0.55	0.55	0.55	0.55	0.55	0.55	0.55	0.55	0.13	0.07	0.01			0.55	
26	0.01	0.01	0.01	0.01	0.01	0.01	0.01	0.07	0.07	0.07	0.07	0.04	0.04	0.04	0.04	0.04	0.04	0.04	0.04	0.04	0.04	0.07	0.03	0.03	0.01		0.07	
27	0.03	0.03	0.03	0.03	0.03	0.03	0.03	0.03	0.03	0.03	0.03	0.03	0.03	0.03	0.03	0.03	0.03	0.03	0.03	0.03	0.03	0.03	0.03	0.03	0.01		0.03	
28	0.01	0.01	0.01	0.01	0.01	0.01	0.01	0.01	0.01	0.01	0.01	0.01	0.01	0.01	0.01	0.01	0.01	0.01	0.01	0.01	0.01	0.01	0.01	0.01	0.00		0.01	
29	0.01	0.01	0.01	0.01	0.01	0.01	0.01	0.05	0.05	0.05	0.07	0.07	0.05	0.05	0.07	0.07	0.07	0.07	0.07	0.07	0.07	0.05	0.05	0.05	0.01		0.07	
30	0.00	0.00	0.00	0.00	0.00	0.00	0.00	0.05	0.50	0.50	0.50	0.50	0.50	0.50	0.50	0.50	0.50	0.50	0.50	0.50	0.50	0.05	0.05	0.05	0.00		0.50	
31	0.13	0.13	0.13	0.13	0.13	0.13	0.13	0.36	0.36	0.36	0.36	0.36	0.36	0.36	0.36	0.36	0.36	0.36	0.36	0.36	0.36	0.13	0.13	0.01			0.36	

Bulgaria import oct.2012



**Transelectrica®**  
Societate Administrată în Sistem Dualist

# Market for Allocation of Cross-Border Capacities

## Statistics on Monthly Auction

Oct. 2012		1	2	3	4	5	6	7	8	9	10	11	12	13	14	15	16	17	18	19	20	21	22	23	24	25	26	27	28	29	30	31	
Hungary export	Number of Participants	17	17	17	17	17	17	17	17	17	17	17	17	17	17	17	17	17	17	17	17	17	17	17	17	17	17	17	17	17	17	17	
	Number of Capacity Holders	16	16	16	16	16	16	16	16	16	16	16	16	16	16	16	16	16	16	16	16	16	16	16	16	16	16	16	16	16	16	16	
	Number of Bids	47	47	47	47	47	47	47	47	47	47	47	47	47	47	47	47	47	47	47	47	47	47	47	47	47	47	47	47	47	47	47	
Hungary import	Number of Participants	16	16	16	16	16	16	16	16	16	16	16	16	16	16	16	16	16	16	16	16	16	16	16	16	16	16	16	16	16	16		
	Number of Capacity Holders	11	11	11	11	11	11	11	11	11	11	11	11	11	11	11	11	11	11	11	11	11	11	11	11	11	11	11	11	11	11		
	Number of Bids	52	52	52	52	52	52	52	52	52	52	52	52	52	52	52	52	52	52	52	52	52	52	52	52	52	52	52	52	52	52		
Bulgaria export	Number of Participants	-	-	-	-	-	-	-	-	-	-	-	-	-	-	-	-	-	-	-	-	-	-	-	-	-	-	-	-	-	-		
	Number of Capacity Holders	5	5	5	5	5	5	5	5	5	5	5	5	5	5	5	5	5	5	5	5	5	5	5	5	5	5	5	5	5	5		
	Number of Bids	-	-	-	-	-	-	-	-	-	-	-	-	-	-	-	-	-	-	-	-	-	-	-	-	-	-	-	-	-	-		
Bulgaria import	Number of Participants	-	-	-	-	-	-	-	-	-	-	-	-	-	-	-	-	-	-	-	-	-	-	-	-	-	-	-	-	-	-		
	Number of Capacity Holders	7	7	7	7	7	7	7	7	7	7	7	7	7	7	7	7	7	7	7	7	7	7	7	7	7	7	7	7	6	6	6	6
	Number of Bids	-	-	-	-	-	-	-	-	-	-	-	-	-	-	-	-	-	-	-	-	-	-	-	-	-	-	-	-	-	-	-	
Serbia export	Number of Participants	8	8	8	8	8	8	8	7	7	7	7	7	7	7	8	8	8	8	8	8	8	8	8	8	8	8	8	8	8	8		
	Number of Capacity Holders	6	6	6	6	6	6	6	5	5	5	5	5	5	5	6	6	6	6	6	6	6	6	6	6	6	6	7	7	6	6		
	Number of Bids	31	31	31	31	31	31	31	30	30	30	30	30	30	30	31	31	31	31	31	31	31	31	31	31	31	31	30	30	30	30		
Serbia import	Number of Participants	5	5	5	5	5	5	5	5	5	5	5	5	5	5	5	5	5	5	5	5	5	5	5	5	5	5	5	5	5	5		
	Number of Capacity Holders	4	4	4	4	4	4	4	4	4	4	4	4	4	4	4	4	4	4	4	4	4	4	4	5	5	5	5	5	5	5		
	Number of Bids	12	12	12	12	12	12	12	12	12	12	12	12	12	12	11	11	11	11	11	11	12	12	12	12	12	12	12	12	12	12		
Ukraine export	Number of Participants	-	-	-	-	-	-	-	-	-	-	-	-	-	-	-	-	-	-	-	-	-	-	-	-	-	-	-	-	-	-		
	Number of Capacity Holders	-	-	-	-	-	-	-	-	-	-	-	-	-	-	-	-	-	-	-	-	-	-	-	-	-	-	-	-	-	-		
	Number of Bids	-	-	-	-	-	-	-	-	-	-	-	-	-	-	-	-	-	-	-	-	-	-	-	-	-	-	-	-	-	-		
Ukraine import	Number of Participants	6	6	6	6	6	6	6	-	-	-	-	-	-	-	-	-	-	-	-	-	-	-	7	7	7	7	7	7	7	7		
	Number of Capacity Holders	4	4	4	4	4	4	4	-	-	-	-	-	-	-	-	-	-	-	-	-	-	-	3	3	3	3	3	3	3	3		
	Number of Bids	17	17	17	17	17	17	17	-	-	-	-	-	-	-	-	-	-	-	-	-	-	-	18	18	18	18	18	18	18	18		

Oct. 2012	Maxim	Minim
Number of Participants	17	5
Number of Capacity Holders	16	3
Number of Bids	52	11

Note: Information regarding number of participants and number of bids on Bulgarian border are not detained by the Romanian TSO

# Market for Allocation of Cross-Border Capacities



## Statistics on Daily Auctions

oct. 2012		Daily Auctions																														
		1	2	3	4	5	6	7	8	9	10	11	12	13	14	15	16	17	18	19	20	21	22	23	24	25	26	27	28	29	30	31
Hungary Export	<b>Number of Participants</b>	5	12	8	12	12	10	9	9	10	13	11	11	9	5	8	11	11	10	10	9	7	8	11	13	11	12	12	8	8	12	10
	<b>Number of Traders</b>	5	10	7	9	12	8	9	8	10	12	10	10	9	5	7	9	9	9	9	9	7	7	8	9	8	9	10	6	6	7	9
	<b>Number of Bids</b>	8	21	18	27	25	23	15	18	19	26	22	23	21	8	13	23	23	19	19	18	14	14	20	27	23	29	26	16	18	25	16
Hungary Import	<b>Number of Participants</b>	5	11	12	9	12	10	8	7	10	10	10	9	9	5	6	12	10	13	12	9	7	7	13	10	9	9	9	7	6	11	11
	<b>Number of Traders</b>	5	8	10	7	9	10	7	6	9	8	10	8	9	5	6	9	8	9	10	8	6	7	12	9	8	8	7	7	5	6	9
	<b>Number of Bids</b>	8	24	23	18	23	23	14	12	21	20	20	15	19	7	11	26	20	26	25	20	12	12	24	21	20	22	20	11	8	21	20
Bulgaria Export	<b>Number of Participants</b>	8	8	9	8	8	8	8	8	8	7	7	7	8	6	6	8	7	8	7	8	7	7	7	7	7	6	6	6	5	6	8
	<b>Number of Traders</b>	8	8	9	8	8	8	8	8	8	7	7	7	7	6	6	8	7	8	7	8	7	7	7	7	6	6	6	5	5	6	8
	<b>Number of Bids</b>	13	14	16	12	13	14	13	13	13	12	11	12	14	10	10	13	11	11	11	12	11	11	11	11	10	11	11	9	9	10	13
Bulgaria Import	<b>Number of Participants</b>	5	6	5	7	7	7	5	6	8	10	9	7	7	5	6	8	6	6	5	6	5	6	8	10	8	10	8	5	8	7	7
	<b>Number of Traders</b>	5	6	5	7	7	7	5	5	7	9	8	6	7	5	6	6	6	6	5	6	5	6	6	7	5	8	6	5	6	5	6
	<b>Number of Bids</b>	7	12	11	11	12	12	9	10	11	15	13	12	13	9	11	13	10	10	10	10	9	9	12	15	14	17	13	8	12	9	13

Note:

- In the table are represented the daily maximum hourly values.



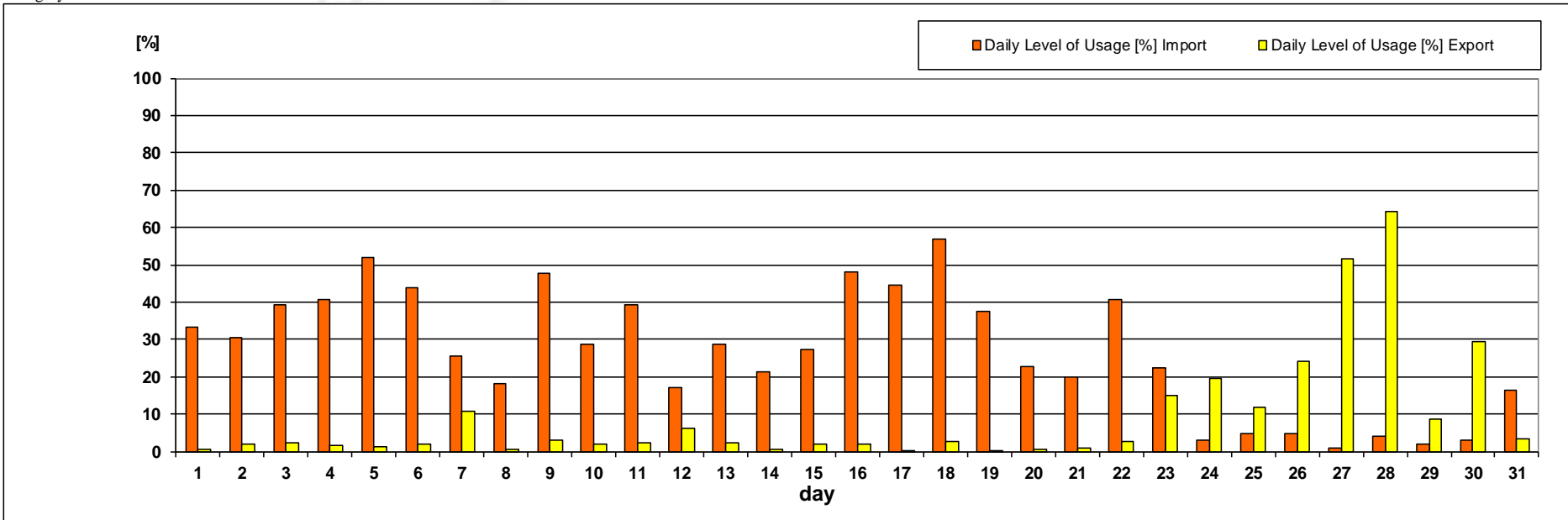
# Market for Allocation of Cross-Border Capacities



**Transelectrica®**  
Societate Administrată în Sistem Dualist

## Daily Auctions on Romanian – Hungarian border Usage Level of Daily Allocated Capacity

Hungary oct.12



Daily Level of Usage [%]

oct.2012	1	2	3	4	5	6	7	8	9	10	11	12	13	14	15	16	17	18	19	20	21	22	23	24	25	26	27	28	29	30	31
Import	33.31	30.38	39.35	40.80	52.00	43.99	25.61	18.08	47.76	28.53	39.39	17.19	28.68	21.44	27.33	47.99	44.65	56.75	37.36	22.84	19.87	40.51	22.28	3.08	4.63	4.62	0.87	4.17	1.90	2.98	16.22
Export	0.65	1.96	2.30	1.61	1.12	1.86	10.76	0.55	2.83	1.81	2.25	6.16	2.31	0.36	1.98	1.87	0.08	2.57	0.26	0.51	0.93	2.80	15.12	19.65	11.83	24.16	51.72	64.13	8.70	29.54	3.46

Level of usage of daily allocated capacity, calculated at monthly level, as ratio between sum of nominated daily capacities and sum of daily allocated capacities, has the following values:

- Import 24.40 [%]
- Export 9.12 [%]

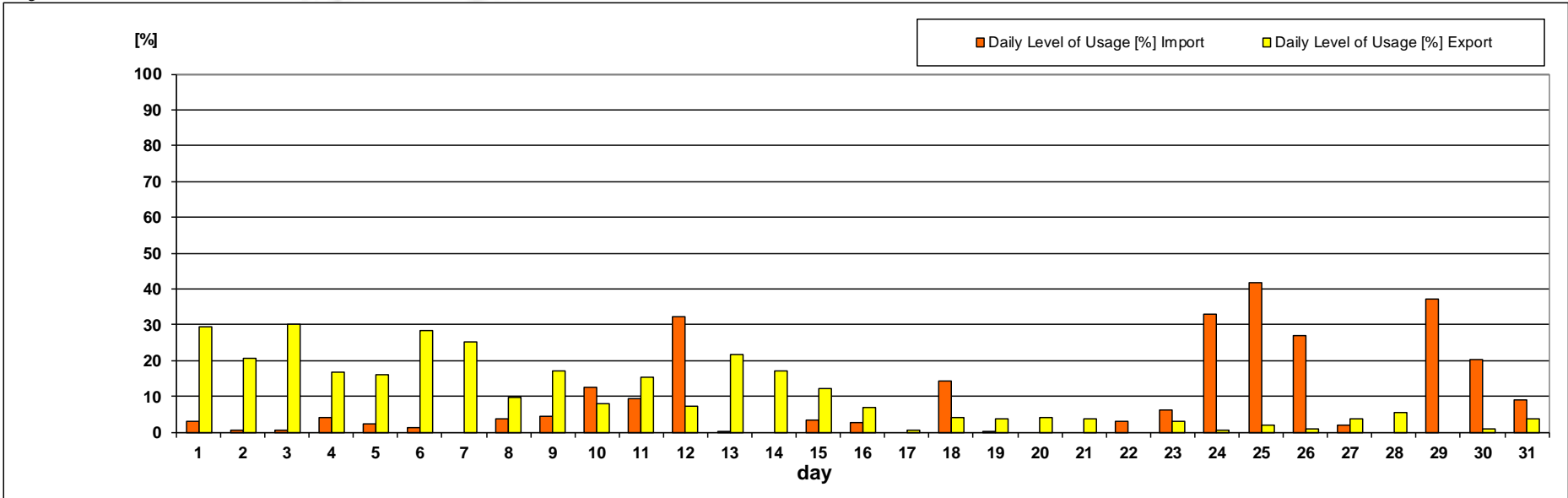


# Market for Allocation of Cross-Border Capacities



## Daily Auctions on Romanian – Bulgarian border Usage Level of Daily Allocated Capacity

Bulgaria oct.12



Daily Level of Usage [%]

oct.2012	1	2	3	4	5	6	7	8	9	10	11	12	13	14	15	16	17	18	19	20	21	22	23	24	25	26	27	28	29	30	31
Import	3.03	0.54	0.64	4.03	2.38	1.30	0.00	3.78	4.36	12.56	9.48	32.23	0.28	0.00	3.28	2.52	0.00	14.19	0.09	0.00	0.00	2.89	6.30	32.90	41.80	26.96	1.92	0.00	37.29	20.27	8.96
Export	29.41	20.54	30.07	16.90	16.17	28.35	25.33	9.83	17.15	8.08	15.44	7.05	21.54	17.07	12.10	6.81	0.36	4.16	3.78	3.92	3.67	0.00	3.16	0.56	2.10	0.77	3.63	5.45	0.00	1.05	3.61

Level of usage of daily allocated capacity, calculated at monthly level, as ratio between sum of nominated daily capacities and sum of daily allocated capacities, has the following values:

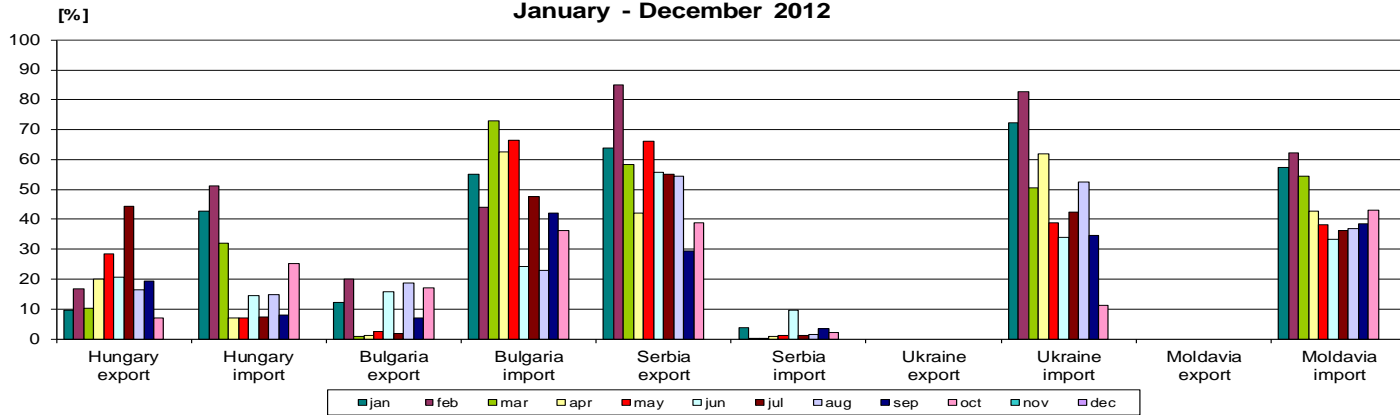
- Import 7.20 [%]
- Export 9.88 [%]



**Transelectrica®**  
Societate Administrată în Sistem Dualist

# Market for Allocation of Cross-Border Capacities

**Allocated Capacity Usage  
January - December 2012**



## Type A

### calculation:

The allocated capacity level of usage on one border and direction represents the percentage ratio between the energy associated with the commercial transactions, notified during a month, and the energy associated with the allocated capacity by the Romanian and by the neighbouring side, but only to those participants who have counterparties on the other side of the border.

[%]	Hungary export	Hungary import	Bulgaria export	Bulgaria import	Serbia export	Serbia import	Ukraine export	Ukraine import	Moldavia export	Moldavia import
jan	9.60	42.62	12.29	55.10	63.80	3.88	0.00	72.31	-	57.34
feb	16.79	51.17	20.11	44.07	85.01	0.28	0.00	82.85	-	62.18
mar	10.25	32.01	0.91	73.02	58.34	0.17	0.00	50.67	-	54.54
apr	20.05	7.00	1.00	62.71	42.05	0.82	0.00	62.06	-	42.82
may	28.28	7.14	2.51	66.36	66.22	1.23	0.00	38.94	-	38.19
jun	20.67	14.49	15.90	24.17	55.69	9.65	0.00	33.93	-	33.32
jul	44.28	7.32	1.88	47.46	55.01	1.05	0.00	42.27	-	36.13
aug	16.31	14.83	18.79	23.04	54.33	1.32	0.00	52.38	-	36.93
sep	19.39	7.91	7.13	41.93	29.26	3.58	0.00	34.58	-	38.55
oct	7.07	25.32	17.10	36.25	38.71	2.17	0.00	11.37	-	43.03
nov										
dec										
<b>average</b>	<b>19.27</b>	<b>20.98</b>	<b>9.76</b>	<b>47.41</b>	<b>54.84</b>	<b>2.42</b>	<b>0.00</b>	<b>48.14</b>	<b>-</b>	<b>44.30</b>

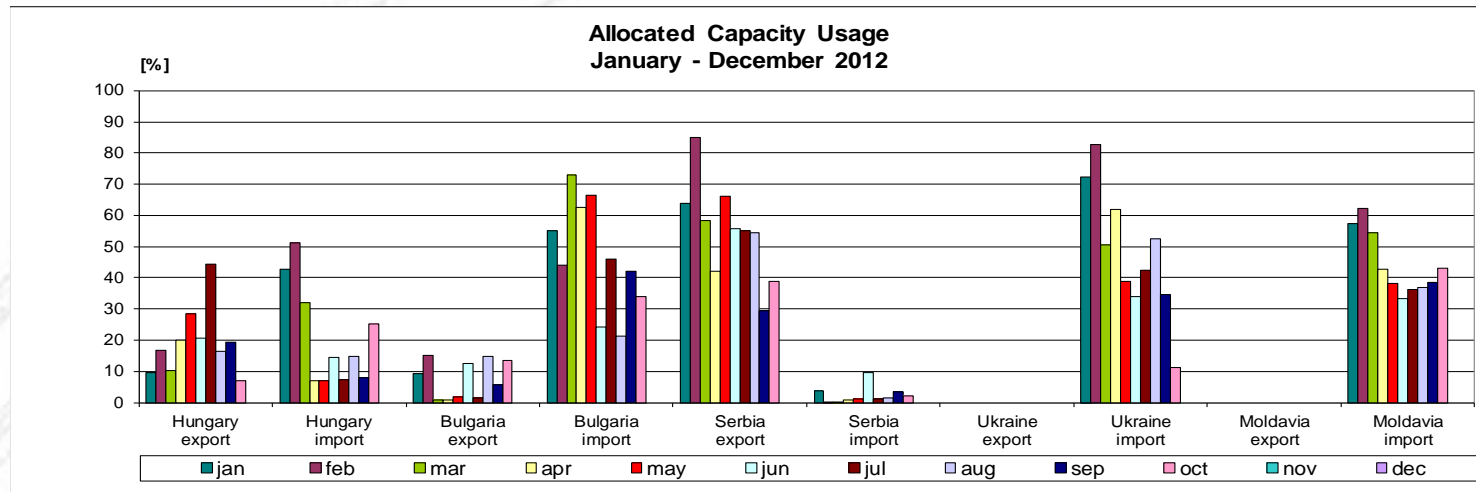
Type A

Applying type A of calculation, in October, the highest level of usage is obtained on the export direction to Serbia (39%) and import direction from Republic of Moldova (43%). Compared with previous month, the usage level has decreased on export direction to Hungary and import direction from Bulgaria, Serbia and Ukraine. On the other hand, usage level on export direction to Bulgaria and Serbia and import direction from Hungary and Moldova has increased.



**Transelectrica®**  
Societate Administrată în Sistem Dualist

# Market for Allocation of Cross-Border Capacities



[%]	Hungary export	Hungary import	Bulgaria export	Bulgaria import	Serbia export	Serbia import	Ukraine export	Ukraine import	Moldavia export	Moldavia import
jan	9.60	42.62	9.12	55.10	63.80	3.88	0.00	72.31	-	57.34
feb	16.79	51.17	15.17	44.07	85.01	0.28	0.00	82.85	-	62.18
mar	10.25	32.01	0.68	73.02	58.34	0.17	0.00	50.67	-	54.54
apr	20.05	7.00	0.77	62.71	42.05	0.82	0.00	62.06	-	42.82
may	28.28	7.14	1.88	66.36	66.22	1.23	0.00	38.94	-	38.19
jun	20.67	14.49	12.44	24.17	55.69	9.48	0.00	33.93	-	33.32
jul	44.28	7.32	1.47	45.99	55.01	1.05	0.00	42.27	-	36.13
aug	16.31	14.83	14.67	21.24	54.33	1.32	0.00	52.38	-	36.93
sep	19.39	7.91	5.62	41.93	29.26	3.58	0.00	34.58	-	38.55
oct	7.07	25.32	13.47	33.82	38.71	2.17	0.00	11.37	-	43.03
nov										
dec										
<b>average</b>	<b>19.27</b>	<b>20.98</b>	<b>7.53</b>	<b>46.84</b>	<b>54.84</b>	<b>2.40</b>	<b>0.00</b>	<b>48.14</b>	<b>-</b>	<b>44.30</b>

Type B

## Type B

### calculation:

The allocated capacity level of usage on one border and direction represents the percentage ratio between the energy associated with the commercial transactions, notified during a month, and the energy associated with the allocated capacity by the Romanian and by the neighbouring side, to all participants, no matter if they have counterparties on the other side of the border or not.

Applying type B of calculation, has lower values on the border with Bulgaria, this being the only difference from type A of calculation. Calculations were made using the results submitted by the neighboring TSOs.

# Market for Allocation of Cross-Border Capacities



## Synthesis (C1, C3, HHI) on type of auction and total values

oct.2012

Border	Auction												Total		
	Yearly			Monthly			Daily			Intraday					
	C1 [%]	C3 [%]	HHI	C1 [%]	C3 [%]	HHI	C1 [%]	C3 [%]	HHI	C1 [%]	C3 [%]	HHI	C1 [%]	C3 [%]	HHI
<b>Hungary import</b>	34.48	86.21	2866	17.33	47.83	1200	37.45	69.44	2067	-	-	-	21.79	39.65	911
<b>Hungary export</b>	25.64	66.67	1742	14.50	40.60	928	37.14	74.30	2249	-	-	-	23.84	45.82	1029
<b>Bulgaria import</b>	50.00	90.00	3550	21.77	57.25	1605	33.20	72.94	2278	-	-	-	17.89	47.52	1138
<b>Bulgaria export</b>	57.89	89.47	4114	40.00	80.00	2800	35.86	79.07	2655	-	-	-	21.65	60.85	1429
<b>Serbia import</b>	44.44	77.78	2840	33.98	84.82	2718	-	-	-	-	-	-	24.36	63.95	1736
<b>Serbia export</b>	49.33	93.33	3454	34.88	80.24	2441	-	-	-	-	-	-	22.78	60.05	1611
<b>Ukraine import</b>	46.00	96.00	3432	34.11	83.57	2566	-	-	-	-	-	-	33.02	84.06	2424
<b>Ukraine export</b>	40.00	90.00	3000	-	-	-	-	-	-	-	-	-	40.00	90.00	3000
<b>Moldavia import</b>	71.43	100.00	5918	-	-	-	-	-	-	-	-	-	71.43	100.00	5918

- Total market share was calculated as ratio between total allocated capacity per each participant (at yearly, monthly, daily and intra-day auctions) and total allocated capacity per border and direction (at yearly, monthly, daily and intra-day auctions).
- Serbian border contains only results from auctions organized by the Romanian TSO.



**Transelectrica®**  
Societate Administrată în Sistem Dualist

## Transelectrica - Market Monitoring Department

### **Contact persons:**

*Octavia Unguroiu - Phone: 021 3035636;*

*Mihaela Petrescu - Phone: 021 3035633;*

*Ioana Craciun - Phone: 021 3035668;*

## Transelectrica - Operational Planning and Analysis Department

### **Contact person:**

*Emanuel Ionita - Phone: 021 3035655*

**Email: [monitorizare@transelectrica.ro](mailto:monitorizare@transelectrica.ro)**

**Fax: 021 3035630**