



Transelectrica®  
Societate Administrată în Sistem Dualist

# MARKET MONITORING REPORT

## Market for Allocation of Cross-Border Capacities

September 2012



ANRE - Romanian Energy Regulatory Authority  
HHI - Herfindahl-Hirschman Index  
BRP - Balance Responsible Party  
BM - Balancing Market  
DAM - Day Ahead Market  
TSO - Transmission System Operator  
DU – Dispatchable Unit  
PN – Physical Notification  
NDC - National Dispatching Center  
C1 – The market share of the largest market participant  
C3 – Total market share of top 3 market participants  
NPS – Minimum number of residual generators  
TTC – Total Transfer Capacity  
NTC – Net Transfer Capacity  
ATC – Available Transfer Capacity



**Transelectrica®**  
Societate Administrată în Sistem Dualist

According to the Commercial Code, Transelectrica, the Romanian Transmission System Operator, operates and monitors the activity of 3 types of markets: Balancing Market, Ancillary Services Market and Market for Allocation of Cross-Border Capacities.

Using the records from the markets data bases, Transelectrica prepares daily, weekly and monthly monitoring reports. A part of the data included in these reports (those data which are not confidential) is published on the website **[www.transelectrica.ro](http://www.transelectrica.ro)**



**Transelectrica®**

**Societate Administrată în Sistem Dualist**

- According to the agreements between Transelectrica and neighbors for year 2012 :
  - ✓ on the Bulgarian border, the bilateral coordinated allocation is done for 100% of total capacity:
    - by ESO EAD for long term auctions;
    - by Transelectrica for daily and intra-day auctions. At daily and intra-day auctions it is applied the “netting” principle.
  - ✓ on the Hungarian border, the bilateral coordinated allocation, is done for 100% of total capacity:
    - by Transelectrica daily auctions and intra-day auctions;
    - by MAVIR long term auctions. At daily and intra-day auctions it is applied the “netting” principle.
  - ✓ on the Serbian border, long term auctions for 50% of total net transfer capacity are held by Transelectrica, the remaining of 50% being allocated by the neighboring TSO.
- Auctions are held on Damas platform, with euro currency trading.
- Long term auction results on the Bulgarian and Hungarian border (auction prices, allocated capacities) are provided by the neighboring TSO. The requested capacity on Bulgarian border is not detained by the Romanian TSO.
- The intra-day allocation is done in two auction sessions for time intervals: 00:00-12:00 and 12:00-24:00.
- Usage of allocated capacity on Ukrainian and Moldavian border is restricted by Ukrainian TSO agreement and respectively by the approval of the distribution operator of the passive consumption islands.

- Due to lack of capacity request from participants on import direction from Serbia were not allocated 5 MW for 15.09 – 30.09 time period.
- After putting in operation of AT400/220 kV Iernut, NTC values were increased, as follows :
  - on Serbia – Romania border direction, 100 MW more than the value used on monthly auction, between 15 - 30.09.2012. A second auction was held on 05.09 for 15 - 30.09.2012 with 50 MW offered capacity.
  - on Bulgaria – Romania border direction, 100 MW more than the value used on monthly auction, between 01 - 02.09.2012 and 08 -16.09.2012.
  - on Hungary – Romania border direction:
    - 450 MW more than the value used on monthly auction, between 01 - 02.09.2012, 17 – 21.09.2012 and 24 - 30.09.2012;
    - 350 MW more than the value used on monthly auction, between 08 – 09.09.2012, 13 - 16.09.2012 and 22 - 23.09.2012;
    - 250 MW more than the value used on monthly auction, between 10 – 12.09.2012.

Supplementary capacity on Bulgarian and Hungarian borders was offered to the daily and intraday auctions. The announcement of this modification was published on [www.transelectrica.ro](http://www.transelectrica.ro) (Transparency section/ Capacity Auction and Use data / Details on TTC, TRM, NTC, AAC and ATC for each capacity allocation session/ NTC annual and monthly values.

# Market for Allocation of Cross-Border Capacities



**Transelectrica®**  
Societate Administrată în Sistem Dualist

## Monthly auction. Results of 01 - 30 September 2012

	Prices [euro/MW/h]	Capacities [MW]						
	Resultes	TTC*	NTC*	ATC	AAC	Requested	Allocated	Final Rights**
<b>Hungary export</b>								
01 - 07 september 2012	0.37	500	400	205	195	526	201	396
08 - 23 september 2012	0.37	450	350	155	195	526	155	350
24 - 27 september 2012	0.37	400	300	105	195	526	105	300
28 - 30 september 2012	0.37	450	350	155	195	526	155	350
<b>Hungary import</b>								
01 - 30 september 2012	0.37	350	250	105	145	530	105	250
<b>Bulgaria export</b>								
01 - 30 september 2012	0.13	350	250	60	190	-	60	250
<b>Bulgaria import</b>								
24 - 30 september 2012	4.63	350	250	100	150	-	100	250

\* total values

\*\* final rights = monthly allocated capacities + annual allocated capacities (border and direction total values) after withdrawals.

**Public**

# Market for Allocation of Cross-Border Capacities



**Transelectrica®**  
Societate Administrată în Sistem Dualist

## Monthly auction. Results of 01 - 30 September 2012

	Prices [euro/MW/h]	Capacities [MW]						
	Resultes	TTC*	NTC*	ATC	AAC	Requested	Allocated	Final Rights**
<b>Serbia export</b>								
01 - 07 september 2012	0.70	500	400	125	75	240	125	400
08 - 23 september 2012	1.37	450	350	100	75	240	100	350
24 - 27 september 2012	2.22	400	300	75	75	239	75	300
28 - 30 september 2012	1.37	450	350	100	75	250	100	350
<b>Serbia import</b>								
01 - 09 september 2012	0.11	350	250	80	45	210	80	249
10 - 14 september 2012	0.11	450	350	80	45	210	80	294
15 - 23 september 2012***	0.11/0.00	450	350	80/50	45	210/45	80/45	294/339
24 - 30 september 2012***	0.11/0.00	450	350	80/50	45	210/45	80/45	294/319
<b>Ukraine export</b>								
01 - 30 september 2012	-	150	50	0	50	-	-	50
<b>Ukraine import</b>								
01 - 30 september 2012	2.97	200	100	50	50	153	50	100
<b>Moldavia export</b>								
01 - 30 september 2012	-	-	-	-	-	-	-	-
<b>Moldavia import</b>								
01 - 30 september 2012	-	175	175	0	175	-	-	175

\* total values

\*\*\* final rights = monthly allocated capacities + annual allocated capacities (border and direction total values) after withdrawals + allocated capacities at second auction by neighbor TSO (45 MW between 10 – 16.09; 17 – 23.09 and 25 MW between 24 – 30.09).

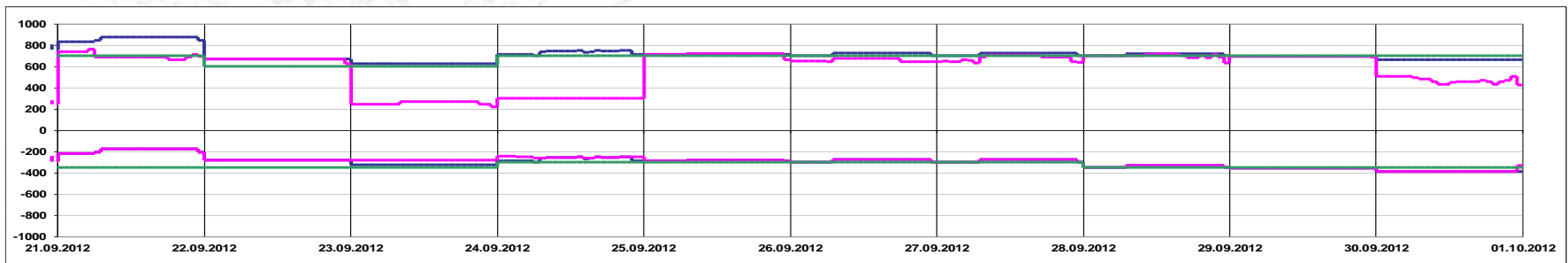
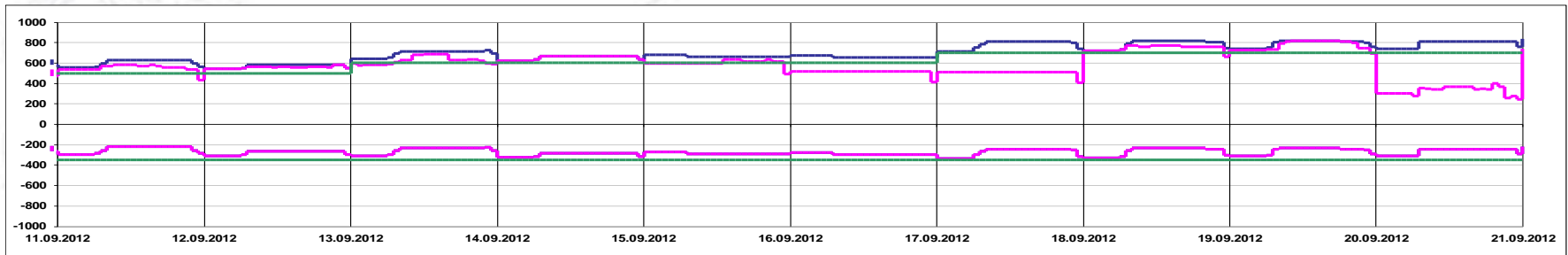
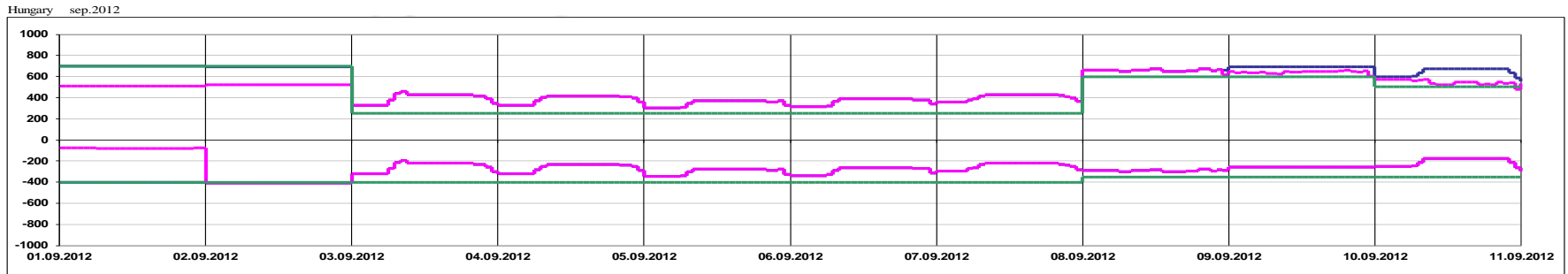
Note: Values of ATC, AAC, Requested and Allocated capacities on Serbian border are related to auctions organized by Romanian TSO. Two auction sessions were held on import direction from Serbia: 01 – 30.09.2012; 15 – 30.09.2012. Results are presented as follow: first auction values/second auction values.

**Public**



**Transelectrica®**  
Societate Administrată în Sistem Dualist

## Daily Auctions on Romanian – Hungarian border



Offered Capacity on Daily Auction Import (+) / Export (-) [MW]

Allocated Capacity on Daily Auction Import (+) / Export (-) [MW]

Net Transfer Capacity (NTC) Import (+) / Export (-) [MW]

Public





**Transelectrica®**  
Societate Administrată în Sistem Dualist

# Market for Allocation of Cross-Border Capacities

## Daily Auctions on Romanian – Hungarian border

### Auction Price [Euro/MW/h] - Export

day	1	2	3	4	5	6	7	8	9	10	11	12	13	14	15	16	17	18	19	20	21	22	23	24	Max	
1	0.00	0.00	0.00	0.00	0.00	0.00	0.00	0.00	0.00	0.00	0.00	0.00	0.00	0.00	0.00	0.00	0.00	0.00	0.00	0.00	0.00	0.00	0.00	0.00	0.00	
2	0.05	0.05	0.05	0.05	0.05	0.05	0.05	0.05	0.03	0.03	0.05	0.05	0.05	0.05	0.05	0.05	0.05	0.05	0.03	0.03	0.05	0.05	0.05	0.01	0.05	
3	0.05	0.05	0.05	0.05	0.05	0.05	0.05	0.05	0.23	0.05	0.23	0.55	0.55	0.44	0.44	0.44	0.44	0.44	0.44	0.44	0.44	0.44	0.23	0.02	0.55	
4	0.10	0.10	0.10	0.10	0.10	0.10	0.27	0.27	0.30	0.30	0.30	0.30	0.30	0.30	0.30	0.30	0.30	0.30	0.30	0.30	0.33	0.27	0.27	0.05	0.33	
5	0.08	0.08	0.08	0.08	0.08	0.08	0.08	0.10	0.10	0.10	0.10	0.20	0.20	0.51	0.51	0.51	0.10	0.10	0.10	0.10	0.10	0.10	0.10	0.03	0.51	
6	0.05	0.05	0.05	0.05	0.05	0.05	0.11	0.13	0.13	0.13	0.13	0.15	0.15	0.15	0.15	0.15	0.25	0.13	0.13	0.13	0.13	0.13	0.13	0.03	0.25	
7	0.13	0.13	0.13	0.13	0.13	0.15	0.13	0.15	0.15	0.15	0.15	0.15	0.15	0.15	0.15	0.22	0.15	0.15	0.13	0.13	0.15	0.13	0.13	0.03	0.22	
8	0.16	0.16	0.16	0.16	0.16	0.16	0.10	0.10	0.16	0.16	0.16	0.16	0.16	0.10	0.10	0.10	0.10	0.10	0.16	0.16	0.21	0.16	0.16	0.05	0.21	
9	0.05	0.05	0.05	0.05	0.05	0.05	0.05	0.05	0.05	0.05	0.05	0.05	0.05	0.05	0.05	0.05	0.05	0.05	0.05	0.05	0.10	0.10	0.05	0.04	0.10	
10	0.05	0.05	0.05	0.05	0.05	0.05	0.04	0.05	0.16	0.16	0.16	0.16	0.16	0.16	0.16	0.16	0.16	0.16	0.10	0.10	0.10	0.10	0.05	0.03	0.16	
11	0.04	0.04	0.04	0.04	0.04	0.04	0.04	0.05	0.16	0.16	0.16	0.16	0.16	0.16	0.16	0.16	0.16	0.16	0.16	0.16	0.15	0.15	0.05	0.03	0.16	
12	0.13	0.13	0.13	0.13	0.13	0.13	0.13	0.25	0.25	0.25	0.25	0.25	0.25	0.25	0.25	0.25	0.25	0.25	0.25	0.25	0.25	0.25	0.25	0.05	0.25	
13	0.10	0.10	0.10	0.13	0.13	0.10	0.10	0.13	0.13	0.13	0.13	0.13	0.13	0.13	0.13	0.13	0.13	0.13	0.13	0.13	0.26	0.26	0.26	0.05	0.26	
14	0.10	0.10	0.10	0.10	0.10	0.10	0.10	0.10	0.09	0.10	0.10	0.10	0.10	0.10	0.13	0.13	0.10	0.10	0.13	0.10	0.13	0.13	0.30	0.05	0.30	
15	0.52	0.52	0.52	0.52	0.52	0.52	0.52	0.22	0.70	0.70	0.22	0.22	0.22	0.22	0.22	0.22	0.22	0.22	0.22	0.22	0.22	0.22	0.71	0.71	0.22	0.71
16	0.20	0.20	0.20	0.20	0.20	0.20	0.20	0.07	0.07	0.07	0.07	0.07	0.07	0.07	0.07	0.07	0.07	0.07	0.07	0.07	0.07	0.07	0.07	0.03	0.20	
17	0.13	0.13	0.13	0.13	0.13	0.13	0.13	0.17	0.13	0.13	0.13	0.13	0.13	0.13	0.13	0.13	0.13	0.13	0.13	0.13	0.13	0.13	0.13	0.03	0.17	
18	0.12	0.12	0.12	0.12	0.12	0.12	0.13	0.07	0.12	0.12	0.12	0.12	0.12	0.12	0.12	0.12	0.12	0.12	0.12	0.12	0.12	0.07	0.07	0.04	0.13	
19	0.13	0.10	0.10	0.10	0.10	0.10	0.10	0.06	0.12	0.12	0.12	0.12	0.12	0.12	0.12	0.12	0.12	0.12	0.06	0.06	0.06	0.06	0.10	0.03	0.13	
20	0.03	0.03	0.03	0.03	0.03	0.05	0.03	0.03	0.03	0.03	0.03	0.03	0.03	0.03	0.03	0.03	0.03	0.03	0.32	0.35	0.35	0.44	0.44	0.03	0.44	
21	1.11	1.56	1.56	1.56	1.56	2.00	2.00	2.00	2.00	1.56	1.09	1.09	1.09	1.09	1.09	1.09	1.09	1.13	2.00	2.00	1.47	2.10	1.47	0.75	2.10	
22	0.10	0.10	0.10	0.10	0.10	0.10	0.05	0.05	0.05	0.05	0.05	0.05	0.05	0.05	0.05	0.05	0.05	0.05	0.05	0.05	0.05	0.05	0.05	0.05	0.10	
23	0.00	0.00	0.00	0.00	0.00	0.00	0.00	0.00	0.00	0.00	0.00	0.00	0.00	0.00	0.00	0.00	0.00	0.00	0.00	0.00	0.00	0.00	0.00	0.00	0.00	
24	0.00	0.00	0.00	0.00	0.00	0.00	0.00	0.03	0.03	0.03	0.03	0.03	0.03	0.03	0.00	0.00	0.03	0.03	0.03	0.03	0.03	0.03	0.00	0.00	0.03	
25	0.23	0.50	0.50	0.50	0.50	0.50	0.56	0.50	0.61	0.61	0.61	0.61	0.61	0.61	0.61	0.61	0.61	0.61	0.61	0.61	0.61	0.56	0.50	0.23	0.61	
26	0.01	0.01	0.01	0.01	0.01	0.01	0.01	0.10	0.05	0.07	0.07	0.07	0.07	0.07	0.05	0.05	0.05	0.05	0.05	0.05	0.66	0.05	0.05	0.03	0.01	0.66
27	0.01	0.01	0.01	0.01	0.01	0.01	0.01	0.03	0.03	0.03	0.03	0.03	0.03	0.03	0.03	0.03	0.03	0.05	0.03	0.26	0.05	0.05	0.03	0.01	0.26	
28	0.05	0.05	0.05	0.05	0.05	0.05	0.05	0.05	0.05	0.05	0.05	0.05	0.05	0.05	0.05	0.05	0.05	0.05	0.05	0.05	0.05	0.05	0.05	0.01	0.05	
29	0.05	0.05	0.05	0.05	0.05	0.05	0.05	0.07	0.07	0.07	0.07	0.07	0.07	0.07	0.07	0.07	0.07	0.07	0.07	0.07	0.07	0.25	0.25	0.03	0.25	
30	0.07	0.07	0.07	0.07	0.07	0.07	0.07	0.07	0.07	0.07	0.07	0.07	0.07	0.07	0.07	0.07	0.07	0.07	0.07	0.07	0.07	0.07	0.07	0.00	0.07	

Hungary export sep.2012



**Transelectrica®**  
Societate Administrată în Sistem Dualist

# Market for Allocation of Cross-Border Capacities

## Daily Auctions on Romanian – Hungarian border

### Auction Price [Euro/MW/h] - Import

day	1	2	3	4	5	6	7	8	9	10	11	12	13	14	15	16	17	18	19	20	21	22	23	24	Max	
1	0.00	0.00	0.00	0.00	0.00	0.00	0.00	0.00	0.00	0.00	0.00	0.00	0.00	0.00	0.00	0.00	0.00	0.00	0.00	0.00	0.00	0.00	0.00	0.00	0.00	0.00
2	0.00	0.00	0.00	0.00	0.00	0.00	0.00	0.00	0.00	0.00	0.00	0.00	0.00	0.00	0.00	0.00	0.00	0.00	0.00	0.00	0.00	0.00	0.00	0.00	0.00	0.00
3	0.13	0.13	0.13	0.13	0.13	0.13	0.13	0.02	0.01	0.02	0.02	0.02	0.01	0.02	0.02	0.02	0.02	0.02	0.02	0.02	0.02	0.01	0.02	0.01	0.03	0.13
4	0.17	0.17	0.17	0.17	0.17	0.17	0.17	0.05	0.03	0.03	0.03	0.03	0.03	0.03	0.03	0.03	0.03	0.03	0.03	0.03	0.03	0.03	0.03	0.03	0.05	0.17
5	0.05	0.21	0.21	0.21	0.21	0.05	0.03	0.05	0.05	0.15	0.05	0.05	0.05	0.05	0.05	0.05	0.05	0.03	0.03	0.03	0.03	0.03	0.03	0.03	0.05	0.21
6	0.05	0.05	0.05	0.05	0.05	0.05	0.05	0.05	0.03	0.03	0.03	0.03	0.03	0.03	0.03	0.03	0.03	0.03	0.03	0.03	0.03	0.03	0.03	0.03	0.03	0.05
7	0.04	0.04	0.04	0.04	0.04	0.03	0.03	0.03	0.03	0.03	0.03	0.03	0.03	0.03	0.03	0.03	0.03	0.03	0.03	0.03	0.03	0.03	0.03	0.03	0.03	0.04
8	0.01	0.01	0.01	0.01	0.01	0.01	0.01	0.01	0.01	0.01	0.01	0.01	0.01	0.01	0.01	0.01	0.01	0.01	0.01	0.01	0.01	0.01	0.01	0.01	0.00	0.01
9	0.00	0.00	0.00	0.00	0.00	0.00	0.00	0.00	0.00	0.00	0.00	0.00	0.00	0.00	0.00	0.00	0.00	0.00	0.00	0.00	0.00	0.00	0.00	0.00	0.00	0.00
10	0.00	0.00	0.00	0.00	0.00	0.00	0.00	0.00	0.00	0.00	0.00	0.00	0.00	0.00	0.00	0.00	0.00	0.00	0.00	0.00	0.00	0.00	0.00	0.00	0.00	0.00
11	0.00	0.00	0.00	0.00	0.00	0.00	0.00	0.00	0.00	0.00	0.00	0.00	0.00	0.00	0.00	0.00	0.00	0.00	0.00	0.00	0.00	0.00	0.00	0.00	0.00	0.00
12	0.03	0.01	0.03	0.03	0.03	0.03	0.01	0.00	0.00	0.00	0.00	0.00	0.00	0.00	0.00	0.00	0.00	0.00	0.00	0.00	0.00	0.00	0.01	0.01	0.01	0.03
13	0.00	0.00	0.00	0.00	0.00	0.00	0.00	0.00	0.00	0.00	0.00	0.00	0.00	0.00	0.00	0.00	0.00	0.00	0.00	0.00	0.00	0.00	0.00	0.00	0.00	0.00
14	0.03	0.03	0.03	0.03	0.03	0.03	0.03	0.03	0.03	0.05	0.05	0.05	0.05	0.05	0.05	0.05	0.03	0.03	0.03	0.03	0.03	0.01	0.01	0.03	0.01	0.05
15	0.00	0.00	0.00	0.00	0.00	0.00	0.00	0.00	0.00	0.00	0.00	0.00	0.00	0.00	0.00	0.00	0.00	0.00	0.00	0.00	0.00	0.00	0.00	0.00	0.00	0.00
16	0.00	0.00	0.00	0.00	0.00	0.00	0.00	0.00	0.00	0.00	0.00	0.00	0.00	0.00	0.00	0.00	0.00	0.00	0.00	0.00	0.00	0.00	0.00	0.00	0.00	0.00
17	0.00	0.00	0.00	0.00	0.00	0.00	0.00	0.00	0.00	0.00	0.00	0.00	0.00	0.00	0.00	0.00	0.00	0.00	0.00	0.00	0.00	0.00	0.00	0.00	0.00	0.00
18	0.01	0.01	0.01	0.01	0.01	0.01	0.01	0.00	0.00	0.00	0.00	0.00	0.00	0.00	0.00	0.00	0.00	0.00	0.00	0.00	0.00	0.00	0.00	0.00	0.00	0.01
19	0.00	0.00	0.00	0.00	0.00	0.00	0.00	0.00	0.00	0.00	0.00	0.01	0.01	0.01	0.01	0.01	0.01	0.01	0.01	0.01	0.01	0.00	0.00	0.00	0.00	0.01
20	0.00	0.00	0.00	0.00	0.00	0.00	0.00	0.00	0.00	0.00	0.00	0.00	0.00	0.00	0.00	0.00	0.00	0.00	0.00	0.00	0.00	0.00	0.00	0.00	0.00	0.00
21	0.00	0.00	0.00	0.00	0.00	0.00	0.00	0.00	0.00	0.00	0.00	0.00	0.00	0.00	0.00	0.00	0.00	0.00	0.00	0.00	0.00	0.00	0.00	0.00	0.00	0.00
22	0.02	0.02	0.02	0.02	0.02	0.02	0.02	0.02	0.02	0.02	0.02	0.02	0.02	0.03	0.03	0.04	0.03	0.03	0.03	0.03	0.03	0.03	0.03	0.03	0.00	0.04
23	0.00	0.00	0.00	0.00	0.00	0.00	0.00	0.00	0.00	0.00	0.00	0.00	0.00	0.00	0.00	0.00	0.00	0.00	0.00	0.00	0.00	0.00	0.00	0.00	0.00	0.00
24	0.00	0.00	0.00	0.00	0.00	0.00	0.00	0.00	0.00	0.00	0.00	0.00	0.00	0.00	0.00	0.00	0.00	0.00	0.00	0.00	0.00	0.00	0.00	0.00	0.00	0.00
25	0.01	0.01	0.01	0.01	0.01	0.01	0.01	0.01	0.01	0.01	0.01	0.01	0.01	0.01	0.01	0.01	0.01	0.01	0.01	0.01	0.01	0.01	0.01	0.01	0.00	0.01
26	0.00	0.00	0.00	0.00	0.00	0.00	0.00	0.00	0.00	0.00	0.00	0.00	0.00	0.00	0.00	0.00	0.00	0.00	0.00	0.00	0.00	0.00	0.00	0.00	0.00	0.00
27	0.00	0.00	0.00	0.00	0.00	0.00	0.00	0.00	0.00	0.00	0.00	0.00	0.00	0.00	0.00	0.00	0.00	0.00	0.00	0.00	0.00	0.00	0.00	0.00	0.00	0.00
28	0.01	0.01	0.01	0.01	0.01	0.01	0.00	0.00	0.00	0.00	0.00	0.00	0.01	0.01	0.01	0.00	0.00	0.00	0.00	0.00	0.00	0.00	0.00	0.00	0.00	0.01
29	0.01	0.01	0.01	0.01	0.01	0.01	0.01	0.01	0.01	0.01	0.01	0.01	0.01	0.01	0.01	0.01	0.01	0.01	0.01	0.01	0.01	0.01	0.01	0.01	0.00	0.01
30	0.00	0.00	0.00	0.00	0.00	0.00	0.00	0.00	0.00	0.00	0.00	0.00	0.00	0.00	0.00	0.00	0.00	0.00	0.00	0.00	0.00	0.00	0.00	0.00	0.00	0.00

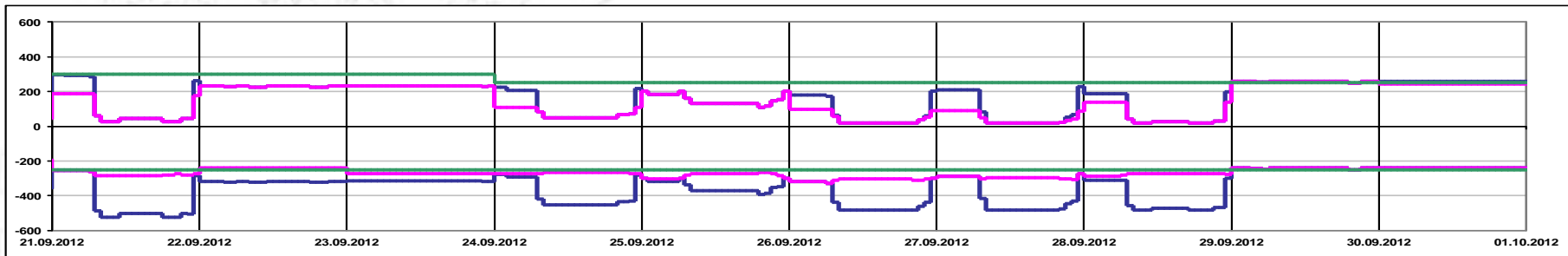
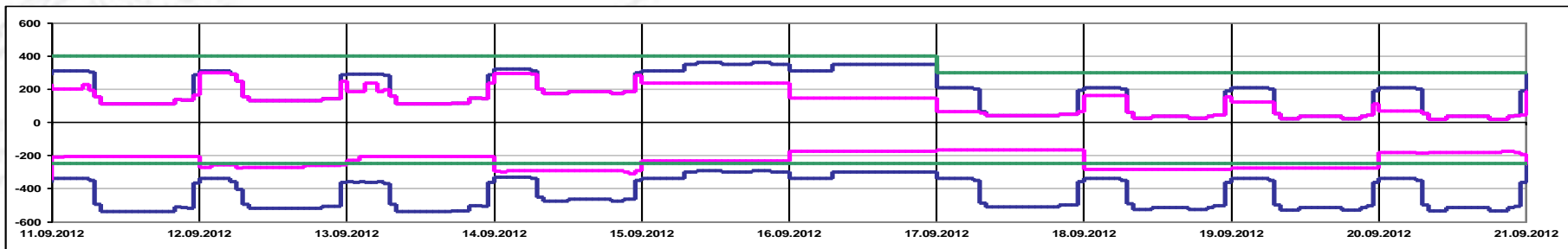
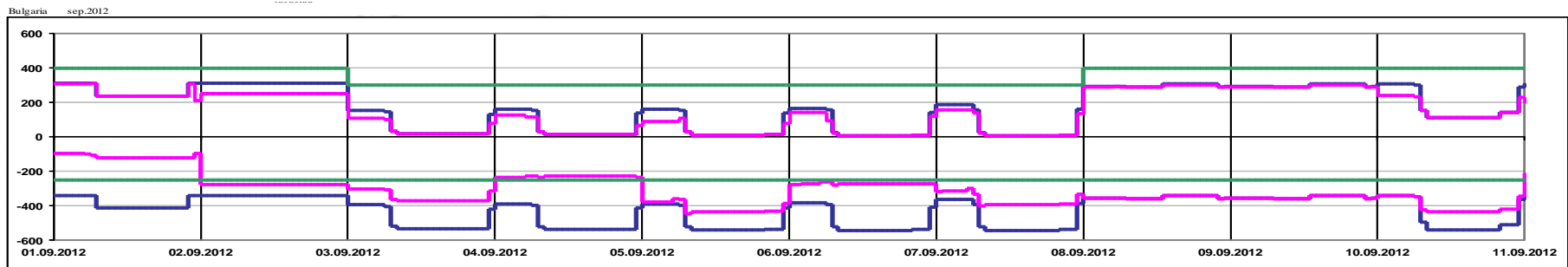
Hungary import sep.2012

Public



**Transelectrica®**  
Societate Administrată în Sistem Dualist

## Daily Auctions on Romanian – Bulgarian border



Offered Capacity on Daily Auction Import (+) / Export (-) [MW]

Allocated Capacity on Daily Auction Import (+) / Export (-) [MW]

Net Transfer Capacity (NTC) Import (+) / Export (-) [MW]

**Public**

# Market for Allocation of Cross-Border Capacities



Transelectrica®  
Societate Administrată în Sistem Dualist

## Daily Auctions on Romanian – Bulgarian border

### Auction Price [Euro/MW/h] – Export

day	1	2	3	4	5	6	7	8	9	10	11	12	13	14	15	16	17	18	19	20	21	22	23	24	Max
1	0.00	0.00	0.00	0.00	0.00	0.00	0.00	0.00	0.00	0.00	0.00	0.00	0.00	0.00	0.00	0.00	0.00	0.00	0.00	0.00	0.00	0.00	0.00	0.00	0.00
2	0.00	0.00	0.00	0.00	0.00	0.00	0.00	0.00	0.00	0.00	0.00	0.00	0.00	0.00	0.00	0.00	0.00	0.00	0.00	0.00	0.00	0.00	0.00	0.00	0.00
3	0.00	0.00	0.00	0.00	0.00	0.00	0.00	0.00	0.00	0.00	0.00	0.00	0.00	0.00	0.00	0.00	0.00	0.00	0.00	0.00	0.00	0.00	0.00	0.00	0.00
4	0.00	0.00	0.00	0.00	0.00	0.00	0.00	0.00	0.00	0.00	0.00	0.00	0.00	0.00	0.00	0.00	0.00	0.00	0.00	0.00	0.00	0.00	0.00	0.00	0.00
5	0.00	0.00	0.00	0.00	0.00	0.00	0.00	0.00	0.00	0.00	0.00	0.00	0.00	0.00	0.00	0.00	0.00	0.00	0.00	0.00	0.00	0.00	0.00	0.00	0.00
6	0.00	0.00	0.00	0.00	0.00	0.00	0.00	0.00	0.00	0.00	0.00	0.00	0.00	0.00	0.00	0.00	0.00	0.00	0.00	0.00	0.00	0.00	0.00	0.00	0.00
7	0.00	0.00	0.00	0.00	0.00	0.00	0.00	0.00	0.00	0.00	0.00	0.00	0.00	0.00	0.00	0.00	0.00	0.00	0.00	0.00	0.00	0.00	0.00	0.00	0.00
8	0.01	0.01	0.01	0.01	0.01	0.01	0.01	0.01	0.01	0.01	0.01	0.01	0.01	0.01	0.01	0.01	0.01	0.01	0.01	0.01	0.01	0.01	0.01	0.01	0.01
9	0.01	0.01	0.01	0.01	0.01	0.01	0.01	0.01	0.01	0.01	0.01	0.01	0.01	0.01	0.01	0.01	0.01	0.01	0.01	0.01	0.01	0.01	0.01	0.01	0.01
10	0.01	0.01	0.01	0.01	0.01	0.01	0.00	0.00	0.00	0.00	0.00	0.00	0.00	0.00	0.00	0.00	0.00	0.00	0.00	0.00	0.00	0.00	0.00	0.00	0.01
11	0.00	0.00	0.00	0.00	0.00	0.00	0.00	0.00	0.00	0.00	0.00	0.00	0.00	0.00	0.00	0.00	0.00	0.00	0.00	0.00	0.00	0.00	0.00	0.00	0.00
12	0.00	0.00	0.00	0.00	0.00	0.00	0.00	0.00	0.00	0.00	0.00	0.00	0.00	0.00	0.00	0.00	0.00	0.00	0.00	0.00	0.00	0.00	0.00	0.00	0.00
13	0.00	0.00	0.00	0.00	0.00	0.00	0.00	0.00	0.00	0.00	0.00	0.00	0.00	0.00	0.00	0.00	0.00	0.00	0.00	0.00	0.00	0.00	0.00	0.00	0.00
14	0.00	0.00	0.00	0.00	0.00	0.00	0.00	0.00	0.00	0.00	0.00	0.00	0.00	0.00	0.00	0.00	0.00	0.00	0.00	0.00	0.00	0.00	0.00	0.00	0.00
15	0.00	0.00	0.00	0.00	0.00	0.00	0.00	0.00	0.00	0.00	0.00	0.00	0.00	0.00	0.00	0.00	0.00	0.00	0.00	0.00	0.00	0.00	0.00	0.00	0.00
16	0.00	0.00	0.00	0.00	0.00	0.00	0.00	0.00	0.00	0.00	0.00	0.00	0.00	0.00	0.00	0.00	0.00	0.00	0.00	0.00	0.00	0.00	0.00	0.00	0.00
17	0.00	0.00	0.00	0.00	0.00	0.00	0.00	0.00	0.00	0.00	0.00	0.00	0.00	0.00	0.00	0.00	0.00	0.00	0.00	0.00	0.00	0.00	0.00	0.00	0.00
18	0.00	0.00	0.00	0.00	0.00	0.00	0.00	0.00	0.00	0.00	0.00	0.00	0.00	0.00	0.00	0.00	0.00	0.00	0.00	0.00	0.00	0.00	0.00	0.00	0.00
19	0.00	0.00	0.00	0.00	0.00	0.00	0.00	0.00	0.00	0.00	0.00	0.00	0.00	0.00	0.00	0.00	0.00	0.00	0.00	0.00	0.00	0.00	0.00	0.00	0.00
20	0.00	0.00	0.00	0.00	0.00	0.00	0.00	0.00	0.00	0.00	0.00	0.00	0.00	0.00	0.00	0.00	0.00	0.00	0.00	0.00	0.00	0.00	0.00	0.00	0.00
21	0.01	0.01	0.01	0.01	0.01	0.01	0.01	0.00	0.00	0.00	0.00	0.00	0.00	0.00	0.00	0.00	0.00	0.00	0.00	0.00	0.00	0.00	0.00	0.00	0.01
22	0.00	0.00	0.00	0.00	0.00	0.00	0.00	0.00	0.00	0.00	0.00	0.00	0.00	0.00	0.00	0.00	0.00	0.00	0.00	0.00	0.00	0.00	0.00	0.00	0.00
23	0.00	0.00	0.00	0.00	0.00	0.00	0.00	0.00	0.00	0.00	0.00	0.00	0.00	0.00	0.00	0.00	0.00	0.00	0.00	0.00	0.00	0.00	0.00	0.00	0.00
24	0.00	0.00	0.00	0.00	0.00	0.00	0.00	0.00	0.00	0.00	0.00	0.00	0.00	0.00	0.00	0.00	0.00	0.00	0.00	0.00	0.00	0.00	0.00	0.00	0.00
25	0.01	0.00	0.00	0.00	0.00	0.00	0.01	0.00	0.00	0.00	0.00	0.00	0.00	0.00	0.00	0.00	0.00	0.00	0.00	0.00	0.00	0.00	0.00	0.01	0.01
26	0.01	0.01	0.01	0.01	0.01	0.01	0.01	0.00	0.00	0.00	0.00	0.00	0.00	0.00	0.00	0.00	0.00	0.00	0.00	0.00	0.00	0.00	0.00	0.01	0.01
27	0.01	0.01	0.01	0.01	0.01	0.01	0.01	0.00	0.00	0.00	0.00	0.00	0.00	0.00	0.00	0.00	0.00	0.00	0.00	0.00	0.00	0.00	0.00	0.01	0.01
28	0.00	0.00	0.00	0.00	0.00	0.00	0.00	0.00	0.00	0.00	0.00	0.00	0.00	0.00	0.00	0.00	0.00	0.00	0.00	0.00	0.00	0.00	0.00	0.00	0.00
29	0.01	0.01	0.01	0.01	0.01	0.01	0.01	0.01	0.01	0.01	0.01	0.01	0.01	0.01	0.01	0.01	0.01	0.01	0.01	0.01	0.01	0.01	0.01	0.01	0.01
30	0.02	0.02	0.02	0.02	0.02	0.02	0.02	0.02	0.02	0.02	0.02	0.02	0.02	0.02	0.02	0.02	0.02	0.02	0.02	0.02	0.02	0.02	0.02	0.02	0.02

Bulgaria export sep.2012



**Transelectrica®**  
Societate Administrată în Sistem Dualist

# Market for Allocation of Cross-Border Capacities

## Daily Auctions on Romanian – Bulgarian border

### Auction Price [Euro/MW/h] – Import

day	1	2	3	4	5	6	7	8	9	10	11	12	13	14	15	16	17	18	19	20	21	22	23	24	Max	
1	0.00	0.00	0.00	0.00	0.00	0.00	0.04	0.04	0.04	0.04	0.04	0.04	0.04	0.04	0.04	0.04	0.04	0.04	0.04	0.04	0.04	0.04	0.00	0.00	0.04	
2	0.00	0.00	0.00	0.00	0.00	0.00	0.00	0.00	0.00	0.00	0.00	0.00	0.00	0.00	0.00	0.00	0.00	0.00	0.00	0.00	0.00	0.00	0.00	0.00	0.00	0.00
3	0.00	0.00	0.00	0.00	0.00	0.00	0.00	0.00	0.10	0.10	0.10	0.10	0.10	0.10	0.10	0.10	0.10	0.10	0.10	0.10	0.10	0.10	0.10	0.10	0.10	0.10
4	0.00	0.00	0.00	0.00	0.00	0.00	0.00	0.05	0.33	0.33	0.88	5.00	5.00	5.00	5.00	5.00	5.00	0.33	0.33	0.33	0.88	0.88	0.33	0.00	5.00	
5	0.00	0.00	0.00	0.00	0.00	0.00	0.00	0.56	0.56	0.56	3.33	3.33	3.33	3.33	3.33	3.33	3.33	0.56	0.56	0.56	0.03	0.03	0.01	0.00	3.33	
6	0.00	0.00	0.00	0.00	0.00	0.00	0.00	0.00	1.51	1.51	1.51	1.51	1.51	1.51	1.51	1.51	1.51	1.51	1.51	1.51	0.56	0.56	0.01	0.00	1.51	
7	0.00	0.00	0.00	0.00	0.00	0.00	0.00	0.00	0.56	0.56	0.56	0.56	0.56	0.56	0.56	0.56	0.56	0.56	0.56	0.56	0.01	0.01	0.00	0.00	0.56	
8	0.00	0.00	0.00	0.00	0.00	0.01	0.00	0.00	0.00	0.00	0.00	0.00	0.00	0.00	0.00	0.00	0.00	0.00	0.00	0.00	0.00	0.00	0.00	0.00	0.01	
9	0.00	0.00	0.00	0.00	0.00	0.00	0.00	0.00	0.00	0.00	0.00	0.00	0.00	0.00	0.00	0.00	0.00	0.00	0.00	0.00	0.00	0.00	0.00	0.00	0.00	
10	0.00	0.00	0.00	0.00	0.00	0.00	0.00	0.01	0.01	0.01	0.01	0.01	0.01	0.01	0.01	0.01	0.01	0.01	0.01	0.01	0.01	0.01	0.01	0.00	0.01	
11	0.00	0.00	0.00	0.00	0.00	0.00	0.00	0.01	0.03	0.03	0.03	0.03	0.03	0.03	0.03	0.03	0.03	0.03	0.03	0.03	0.03	0.01	0.01	0.01	0.03	
12	0.00	0.00	0.00	0.00	0.00	0.01	0.03	0.04	0.05	0.05	0.05	0.05	0.05	0.05	0.05	0.05	0.05	0.05	0.05	0.05	0.05	0.05	0.05	0.00	0.05	
13	0.00	0.00	0.00	0.00	0.00	0.00	0.00	0.03	0.05	0.05	0.05	0.05	0.05	0.05	0.05	0.05	0.05	0.05	0.05	0.05	0.05	0.05	0.05	0.00	0.05	
14	0.00	0.00	0.00	0.00	0.00	0.00	0.00	0.02	0.02	0.02	0.02	0.02	0.01	0.01	0.01	0.01	0.01	0.01	0.01	0.01	0.02	0.03	0.02	0.00	0.03	
15	0.00	0.00	0.00	0.00	0.00	0.00	0.00	0.00	0.00	0.00	0.00	0.00	0.00	0.00	0.00	0.00	0.00	0.00	0.00	0.00	0.00	0.00	0.00	0.00	0.00	
16	0.00	0.00	0.00	0.00	0.00	0.00	0.00	0.00	0.00	0.00	0.00	0.00	0.00	0.00	0.00	0.00	0.00	0.00	0.00	0.00	0.00	0.00	0.00	0.00	0.00	
17	0.00	0.00	0.00	0.00	0.00	0.00	0.00	0.00	0.01	0.01	0.01	0.01	0.01	0.01	0.01	0.01	0.01	0.01	0.01	0.01	0.01	0.01	0.01	0.00	0.01	
18	0.00	0.00	0.00	0.00	0.00	0.00	0.00	0.05	0.05	0.05	0.05	0.05	0.05	0.05	0.05	0.05	0.05	0.03	0.03	0.03	0.02	0.03	0.03	0.00	0.05	
19	0.00	0.00	0.00	0.00	0.00	0.00	0.00	0.01	0.00	0.00	0.00	0.02	0.02	0.02	0.02	0.02	0.02	0.00	0.00	0.00	0.00	0.01	0.01	0.00	0.02	
20	0.00	0.00	0.00	0.00	0.00	0.00	0.00	0.02	0.03	0.03	0.03	0.03	0.03	0.03	0.03	0.03	0.03	0.03	0.03	0.03	0.03	0.03	0.02	0.00	0.03	
21	0.00	0.00	0.00	0.00	0.00	0.00	0.00	0.05	0.18	0.18	0.18	0.13	0.13	0.13	0.13	0.13	0.13	0.05	0.18	0.18	0.18	0.13	0.13	0.00	0.18	
22	0.02	0.02	0.02	0.02	0.02	0.03	0.03	0.03	0.03	0.03	0.03	0.03	0.02	0.02	0.02	0.02	0.02	0.02	0.02	0.02	0.03	0.03	0.03	0.02	0.03	
23	0.01	0.01	0.01	0.01	0.01	0.01	0.01	0.01	0.01	0.01	0.01	0.01	0.01	0.01	0.01	0.01	0.01	0.01	0.01	0.01	0.01	0.01	0.01	0.01	0.01	
24	0.00	0.00	0.00	0.00	0.00	0.00	0.00	0.02	0.09	0.09	0.09	0.05	0.05	0.05	0.05	0.05	0.05	0.05	0.09	0.09	0.05	0.02	0.02	0.00	0.09	
25	0.01	0.03	0.03	0.03	0.03	0.03	0.01	0.13	5.56	5.56	5.56	5.56	5.56	5.56	5.56	5.56	5.56	4.56	4.56	4.56	0.13	0.13	0.13	0.00	5.56	
26	0.00	0.00	0.00	0.00	0.00	0.00	0.00	0.00	6.03	6.03	6.03	6.03	6.03	6.03	6.03	6.03	6.03	6.03	6.03	6.03	0.66	0.03	0.00	0.00	6.03	
27	0.00	0.00	0.00	0.00	0.00	0.00	0.00	0.00	0.01	0.01	0.01	0.01	0.01	0.01	0.01	0.01	0.01	0.01	0.01	0.26	0.00	0.00	0.00	0.00	0.26	
28	0.00	0.00	0.00	0.00	0.00	0.00	0.00	0.05	2.00	2.00	2.00	2.00	2.00	2.00	2.00	2.00	2.00	2.00	2.00	2.00	2.00	0.26	0.05	0.00	2.00	
29	0.05	0.05	0.05	0.05	0.05	0.05	0.05	0.05	0.05	0.05	0.05	0.05	0.05	0.05	0.05	0.05	0.05	0.05	0.05	0.05	0.05	0.05	0.05	0.01	0.05	
30	0.00	0.00	0.00	0.00	0.00	0.00	0.00	0.00	0.00	0.00	0.00	0.00	0.00	0.00	0.00	0.00	0.00	0.00	0.00	0.00	0.00	0.00	0.00	0.00	0.00	

Bulgaria import sep.2012



**Transelectrica®**  
Societate Administrată în Sistem Dualist

# Market for Allocation of Cross-Border Capacities

## Statistics on Monthly Auction

Sep. 2012		1	2	3	4	5	6	7	8	9	10	11	12	13	14	15	16	17	18	19	20	21	22	23	24	25	26	27	28	29	30
Hungary export	Number of Participants	15	15	15	15	15	15	15	15	15	15	15	15	15	15	15	15	15	15	15	15	15	15	15	15	15	15	15	15	15	15
	Number of Capacity Holders	9	9	9	9	9	9	9	9	9	9	9	9	9	9	9	9	9	9	9	9	9	9	9	9	9	9	9	9	9	9
	Number of Bids	44	44	44	44	44	44	44	44	44	44	44	44	44	44	44	44	44	44	44	44	44	44	44	44	44	44	44	44	44	44
Hungary import	Number of Participants	17	17	17	17	17	17	17	17	17	17	17	17	17	17	17	17	17	17	17	17	17	17	17	17	17	17	17	17	17	
	Number of Capacity Holders	6	6	6	6	6	6	6	6	6	6	6	6	6	6	6	6	6	6	6	6	6	6	6	6	6	6	6	6	6	6
	Number of Bids	52	52	52	52	52	52	52	52	52	52	52	52	52	52	52	52	52	52	52	52	52	52	52	52	52	52	52	52	52	52
Bulgaria export	Number of Participants	-	-	-	-	-	-	-	-	-	-	-	-	-	-	-	-	-	-	-	-	-	-	-	-	-	-	-	-	-	
	Number of Capacity Holders	4	4	4	4	4	4	4	4	4	4	4	4	4	4	4	4	4	4	4	4	4	4	4	4	4	4	4	4	4	4
	Number of Bids	-	-	-	-	-	-	-	-	-	-	-	-	-	-	-	-	-	-	-	-	-	-	-	-	-	-	-	-	-	-
Bulgaria import	Number of Participants	-	-	-	-	-	-	-	-	-	-	-	-	-	-	-	-	-	-	-	-	-	-	-	-	-	-	-	-	-	-
	Number of Capacity Holders	8	8	8	8	8	8	8	8	8	8	8	8	8	8	8	8	8	8	8	8	8	8	8	8	6	6	6	6	6	6
	Number of Bids	-	-	-	-	-	-	-	-	-	-	-	-	-	-	-	-	-	-	-	-	-	-	-	-	-	-	-	-	-	-
Serbia export	Number of Participants	8	8	8	8	8	8	8	8	8	8	8	8	8	8	8	8	8	8	8	8	8	8	8	8	8	8	8	8	8	8
	Number of Capacity Holders	6	6	6	6	6	6	6	5	5	5	5	5	5	5	5	5	5	5	5	5	5	5	5	5	4	4	4	4	5	5
	Number of Bids	21	21	21	21	21	21	21	21	21	21	21	21	21	21	21	21	21	21	21	21	21	21	21	21	21	21	21	23	23	23
Serbia import	Number of Participants	8	8	8	8	8	8	8	8	8	8	8	8	8	8	8/2	8/2	8/2	8/2	8/2	8/2	8/2	8/2	8/2	8/2	8/2	8/2	8/2	8/2	8/2	8/2
	Number of Capacity Holders	4	4	4	4	4	4	4	4	4	4	4	4	4	4	4/2	4/2	4/2	4/2	4/2	4/2	4/2	4/2	4/2	4/2	4/2	4/2	4/2	4/2	4/2	4/2
	Number of Bids	19	19	19	19	19	19	19	19	19	19	19	19	19	19	19/3	19/3	19/3	19/3	19/3	19/3	19/3	19/3	19/3	19/3	19/3	19/3	19/3	19/3	19/3	19/3
Ukraine export	Number of Participants	-	-	-	-	-	-	-	-	-	-	-	-	-	-	-	-	-	-	-	-	-	-	-	-	-	-	-	-	-	-
	Number of Capacity Holders	-	-	-	-	-	-	-	-	-	-	-	-	-	-	-	-	-	-	-	-	-	-	-	-	-	-	-	-	-	-
	Number of Bids	-	-	-	-	-	-	-	-	-	-	-	-	-	-	-	-	-	-	-	-	-	-	-	-	-	-	-	-	-	-
Ukraine import	Number of Participants	9	9	9	9	9	9	9	9	9	9	9	9	9	9	9	9	9	9	9	9	9	9	9	9	9	9	9	9	9	9
	Number of Capacity Holders	3	3	3	3	3	3	3	3	3	3	3	3	3	3	3	3	3	3	3	3	3	3	3	3	3	3	3	3	3	3
	Number of Bids	35	35	35	35	35	35	35	35	35	35	35	35	35	35	35	35	35	35	35	35	35	35	35	35	35	35	35	35	35	35

Sep. 2012	Maxim	Minim
Number of Participants	17	8
Number of Capacity Holders	9	3
Number of Bids	52	19

Note: Information regarding number of participants and number of bids on Bulgarian border are not detained by the Romanian TSO

\* Two auctions on Serbian border, import direction: 01 – 30.09, 15 – 30.09. The results are presented like: first auction/ second auction values. 2 of the participants who won capacity at first auction also won capacity at the second auction.

# Market for Allocation of Cross-Border Capacities



## Statistics on Daily Auctions

sep. 2012		Daily Auctions																													
		1	2	3	4	5	6	7	8	9	10	11	12	13	14	15	16	17	18	19	20	21	22	23	24	25	26	27	28	29	30
Hungary Export	<b>Number of Participants</b>	3	7	9	10	9	9	9	9	6	6	9	10	11	9	8	7	8	7	9	12	13	8	3	5	13	9	9	8	9	5
	<b>Number of Capacity Traders</b>	3	6	5	6	6	6	6	6	5	6	8	7	6	7	5	6	6	5	7	8	6	7	3	5	7	8	8	7	7	5
	<b>Number of Bids</b>	3	15	16	21	16	19	21	16	13	13	16	21	18	20	17	13	13	19	22	21	35	17	6	9	24	21	20	18	20	9
Hungary Import	<b>Number of Participants</b>	4	6	6	12	11	11	8	10	6	5	10	8	9	11	9	6	6	9	12	11	9	13	4	5	12	8	10	11	10	8
	<b>Number of Capacity Traders</b>	4	6	6	8	8	9	6	10	6	5	9	7	8	10	9	6	6	9	12	9	9	12	4	5	11	7	10	10	10	8
	<b>Number of Bids</b>	12	12	12	20	22	19	15	20	15	13	18	17	21	28	19	12	12	20	29	15	16	28	6	8	21	16	19	20	22	13
Bulgaria Export	<b>Number of Participants</b>	4	5	5	7	6	6	6	6	6	5	7	7	6	6	5	5	6	6	8	7	8	6	5	8	7	7	8	7	6	
	<b>Number of Capacity Traders</b>	4	5	5	7	6	6	6	6	6	5	6	7	6	6	5	5	6	6	6	7	8	6	5	7	6	7	8	6	5	
	<b>Number of Bids</b>	4	7	8	9	11	9	10	11	11	11	8	10	9	11	9	7	7	11	10	7	10	12	10	10	14	12	15	13	14	12
Bulgaria Import	<b>Number of Participants</b>	5	5	5	8	6	6	5	4	4	4	7	8	8	5	5	4	4	5	3	6	6	6	4	5	9	7	5	8	7	5
	<b>Number of Capacity Traders</b>	5	5	4	5	4	4	4	4	4	4	6	7	7	5	5	4	4	5	3	5	6	5	4	4	7	5	4	5	5	5
	<b>Number of Bids</b>	8	8	5	8	6	6	7	8	8	7	11	14	12	9	8	5	5	8	5	5	8	10	8	9	16	8	6	9	12	10

Note:

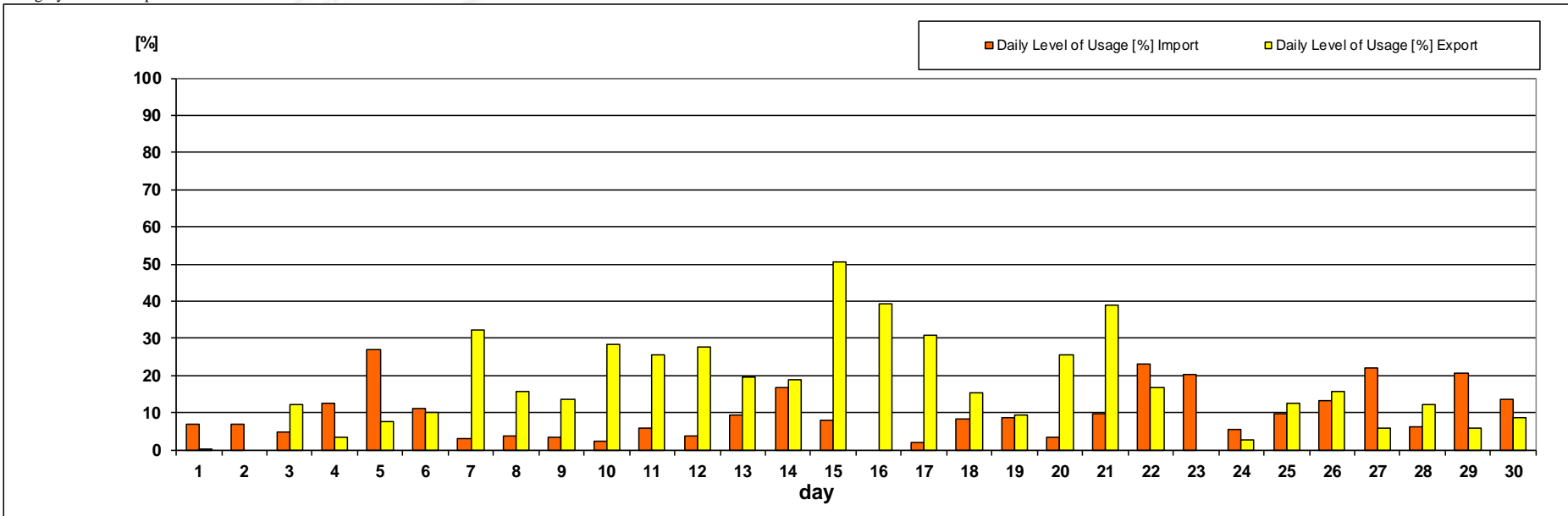
- In the table are represented the daily maximum hourly values.

# Market for Allocation of Cross-Border Capacities



## Daily Auctions on Romanian – Hungarian border Usage Level of Daily Allocated Capacity

Hungary sep.2012



Daily Level of Usage [%]

sep.2012	1	2	3	4	5	6	7	8	9	10	11	12	13	14	15	16	17	18	19	20	21	22	23	24	25	26	27	28	29	30
Import	6.86	6.87	4.58	12.40	27.10	11.00	3.07	3.72	3.35	2.44	5.98	3.56	9.24	16.90	7.91	0.00	1.99	8.26	8.45	3.48	9.81	22.92	20.10	5.29	9.70	13.03	21.96	6.27	20.52	13.41
Export	0.35	0.00	12.13	3.43	7.59	10.05	32.39	15.54	13.68	28.17	25.36	27.65	19.45	18.84	50.44	39.20	30.86	15.35	9.23	25.49	38.79	16.87	0.00	2.62	12.50	15.63	5.87	12.05	5.67	8.74

Level of usage of daily allocated capacity, calculated at monthly level, as ratio between sum of nominated daily capacities and sum of daily allocated capacities, has the following values:

- Import 9.73 [%]
- Export 16.35 [%]

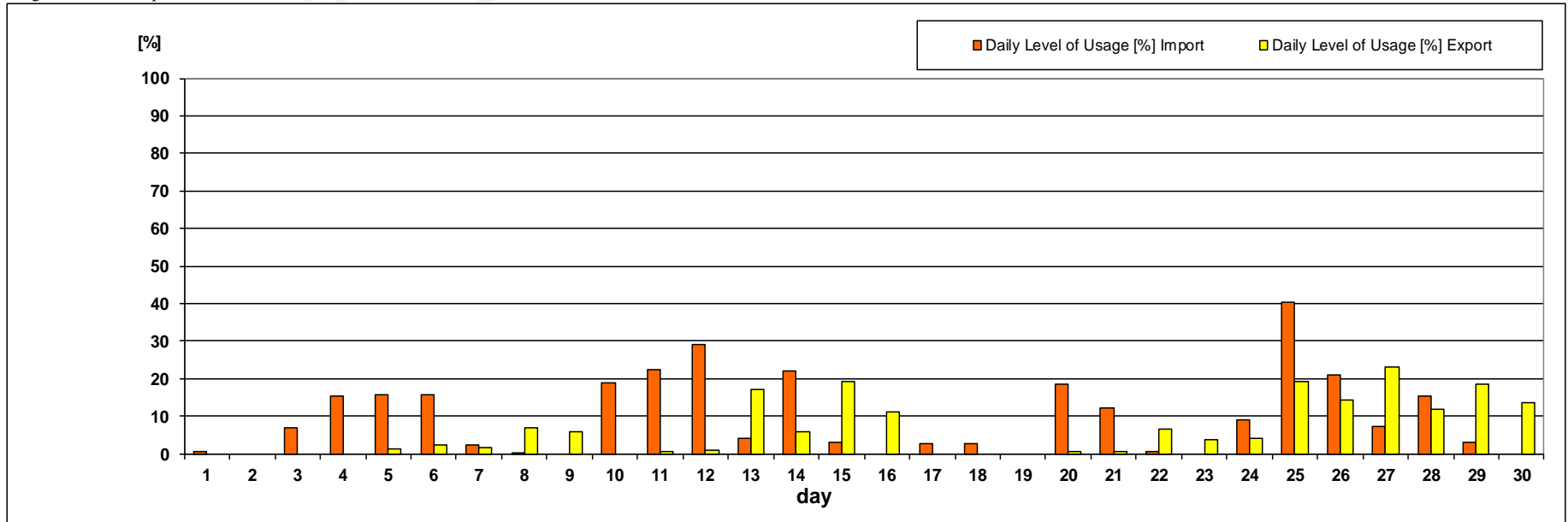


# Market for Allocation of Cross-Border Capacities



## Daily Auctions on Romanian – Bulgarian border Usage Level of Daily Allocated Capacity

Bulgaria sep.2012



Daily Level of Usage [%]

sep.2012	1	2	3	4	5	6	7	8	9	10	11	12	13	14	15	16	17	18	19	20	21	22	23	24	25	26	27	28	29	30
Import	0.54	0.00	6.88	15.45	15.57	15.81	2.26	0.31	0.00	18.81	22.40	29.03	4.16	22.17	3.05	0.00	2.49	2.59	0.00	18.47	12.16	0.36	0.00	9.02	40.46	20.98	7.16	15.44	3.17	0.00
Export	0.00	0.00	0.00	0.00	1.36	2.31	1.46	6.79	5.70	0.00	0.61	0.87	16.98	5.78	19.34	10.92	0.00	0.00	0.00	0.65	0.36	6.45	3.64	4.01	19.03	14.29	23.22	11.91	18.64	13.55

Level of usage of daily allocated capacity, calculated at monthly level, as ratio between sum of nominated daily capacities and sum of daily allocated capacities, has the following values:

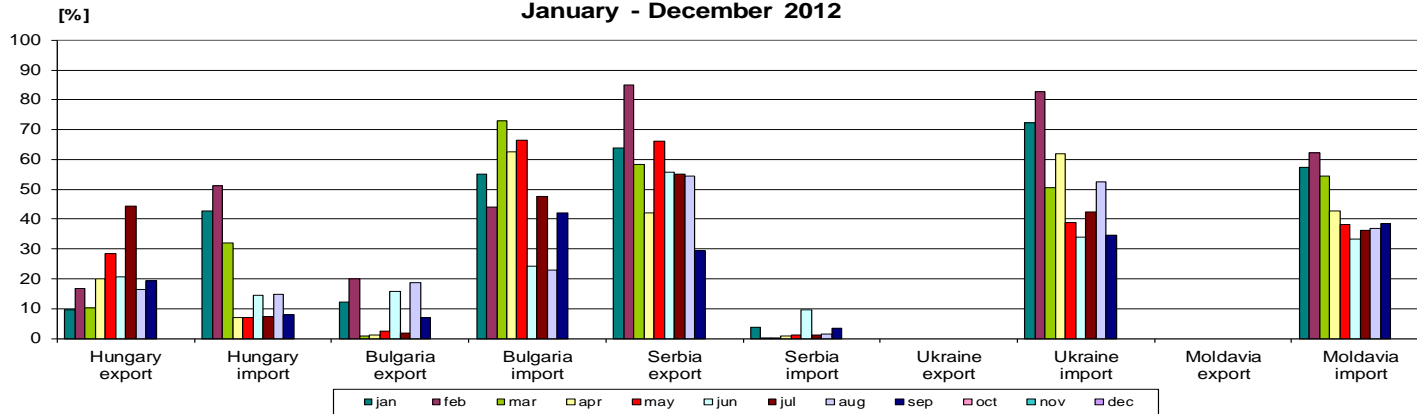
- Import 7.73 [%]
- Export 6.13 [%]



**Transelectrica®**  
Societate Administrată în Sistem Dualist

# Market for Allocation of Cross-Border Capacities

**Allocated Capacity Usage  
January - December 2012**



[%]	Hungary export	Hungary import	Bulgaria export	Bulgaria import	Serbia export	Serbia import	Ukraine export	Ukraine import	Moldavia export	Moldavia import
jan	9.60	42.62	12.29	55.10	63.80	3.88	0.00	72.31	-	57.34
feb	16.79	51.17	20.11	44.07	85.01	0.28	0.00	82.85	-	62.18
mar	10.25	32.01	0.91	73.02	58.34	0.17	0.00	50.67	-	54.54
apr	20.05	7.00	1.00	62.71	42.05	0.82	0.00	62.06	-	42.82
may	28.28	7.14	2.51	66.36	66.22	1.23	0.00	38.94	-	38.19
jun	20.67	14.49	15.90	24.17	55.69	9.65	0.00	33.93	-	33.32
jul	44.28	7.32	1.88	47.46	55.01	1.05	0.00	42.27	-	36.13
aug	16.31	14.83	18.79	23.04	54.33	1.32	0.00	52.38	-	36.93
sep	19.39	7.91	7.13	41.93	29.26	3.58	0.00	34.58	-	38.55
oct										
nov										
dec										
<b>average</b>	<b>20.63</b>	<b>20.50</b>	<b>8.95</b>	<b>48.65</b>	<b>56.63</b>	<b>2.44</b>	<b>0.00</b>	<b>52.22</b>	<b>-</b>	<b>44.44</b>

Type A

## Type A

### calculation:

The allocated capacity level of usage on one border and direction represents the percentage ratio between the energy associated with the commercial transactions, notified during a month, and the energy associated with the allocated capacity by the Romanian and by the neighbouring side, but only to those participants who have counterparties on the other side of the border.

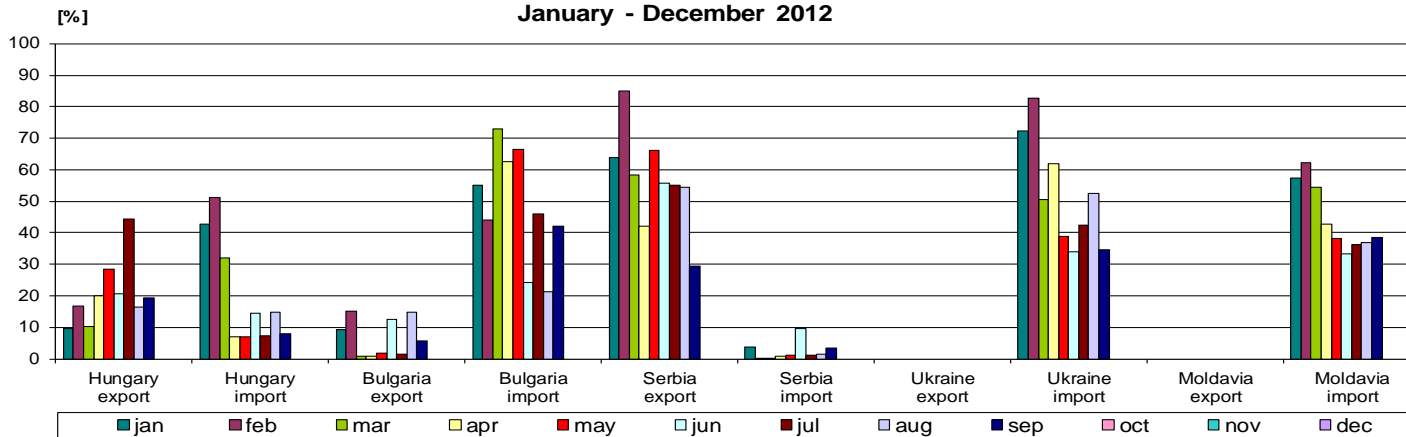
Applying type A of calculation, in September, the highest level of usage is obtained on the import direction from Bulgaria (42%). Compared with previous month, the usage level has decreased on import direction from Hungary and Ukraine and on export direction to Bulgaria and Serbia. On the other hand, usage level on export direction to Hungary and import direction from Bulgaria, Serbia and Moldova has increased.



**Transelectrica®**  
Societate Administrată în Sistem Dualist

# Market for Allocation of Cross-Border Capacities

**Allocated Capacity Usage  
January - December 2012**



[%]	Hungary export	Hungary import	Bulgaria export	Bulgaria import	Serbia export	Serbia import	Ukraine export	Ukraine import	Moldavia export	Moldavia import
jan	9.60	42.62	9.12	55.10	63.80	3.88	0.00	72.31	-	57.34
feb	16.79	51.17	15.17	44.07	85.01	0.28	0.00	82.85	-	62.18
mar	10.25	32.01	0.68	73.02	58.34	0.17	0.00	50.67	-	54.54
apr	20.05	7.00	0.77	62.71	42.05	0.82	0.00	62.06	-	42.82
may	28.28	7.14	1.88	66.36	66.22	1.23	0.00	38.94	-	38.19
jun	20.67	14.49	12.44	24.17	55.69	9.48	0.00	33.93	-	33.32
jul	44.28	7.32	1.47	45.99	55.01	1.05	0.00	42.27	-	36.13
aug	16.31	14.83	14.67	21.24	54.33	1.32	0.00	52.38	-	36.93
sep	19.39	7.91	5.62	41.93	29.26	3.58	0.00	34.58	-	38.55
oct										
nov										
dec										
<b>average</b>	<b>20.63</b>	<b>20.50</b>	<b>6.87</b>	<b>48.29</b>	<b>56.63</b>	<b>2.42</b>	<b>0.00</b>	<b>52.22</b>	<b>-</b>	<b>44.44</b>

Type B

## Type B

### calculation:

The allocated capacity level of usage on one border and direction represents the percentage ratio between the energy associated with the commercial transactions, notified during a month, and the energy associated with the allocated capacity by the Romanian and by the neighbouring side, to all participants, no matter if they have counterparties on the other side of the border or not.

Applying type B of calculation, the level of usage has a lower value on export direction to Bulgaria, this being the only difference from type A of calculation. Calculations were made using the results submitted by the the neighboring TSOs.

## Synthesis (C1, C3, HHI) on type of auction and total values

sep.2012

Border	Auction												Total		
	Yearly			Monthly			Daily			Intraday			C1 [%]	C3 [%]	HHI
	C1 [%]	C3 [%]	HHI	C1 [%]	C3 [%]	HHI	C1 [%]	C3 [%]	HHI	C1 [%]	C3 [%]	HHI			
<b>Hungary import</b>	34.48	86.21	2865.64	33.33	66.67	2063.49	43.01	75.47	2455.08	100.00	100.00	10000.00	31.36	54.86	1454.12
<b>Hungary export</b>	25.64	66.67	1742.27	27.22	64.59	1659.87	34.43	77.82	2529.05	-	-	-	19.27	44.85	985.40
<b>Bulgaria import</b>	35.33	75.33	2279.11	27.23	65.54	1654.55	45.75	81.08	2970.97	-	-	-	15.62	40.03	965.28
<b>Bulgaria export</b>	57.89	89.47	4113.57	58.33	91.67	4027.78	40.48	81.45	2877.75	-	-	-	21.99	60.20	1550.65
<b>Serbia import</b>	44.44	77.78	2839.51	28.85	70.51	2118.67	-	-	-	-	-	-	20.13	53.69	1396.28
<b>Serbia export</b>	49.33	93.33	3454.22	39.77	77.50	2476.61	-	-	-	-	-	-	31.36	65.60	1908.51
<b>Ukraine import</b>	46.00	96.00	3432.00	50.00	100.00	3800.00	-	-	-	-	-	-	38.00	83.00	2698.00
<b>Ukraine export</b>	40.00	90.00	3000.00	-	-	-	-	-	-	-	-	-	40.00	90.00	3000.00
<b>Moldavia import</b>	71.43	100.00	5918.37	-	-	-	-	-	-	-	-	-	71.43	100.00	5918.37

- Total market share was calculated as ratio between total allocated capacity per each participant (at yearly, monthly, daily and intra-day auctions) and total allocated capacity per border and direction (at yearly, monthly, daily and intra-day auctions).
- Serbian border contains only results from auctions organized by Romanian TSO.



**Transelectrica®**  
Societate Administrată în Sistem Dualist

## Transelectrica - Market Monitoring Department

### **Contact persons:**

*Octavia Unguroiu - Phone: 021 3035636;*

*Mihaela Petrescu - Phone: 021 3035633;*

*Ioana Craciun - Phone: 021 3035668;*

## Transelectrica - Operational Planning and Analysis Department

### **Contact person:**

*Emanuel Ionita - Phone: 021 3035655*

**Email: [monitorizare@transelectrica.ro](mailto:monitorizare@transelectrica.ro)**

**Fax: 021 3035630**